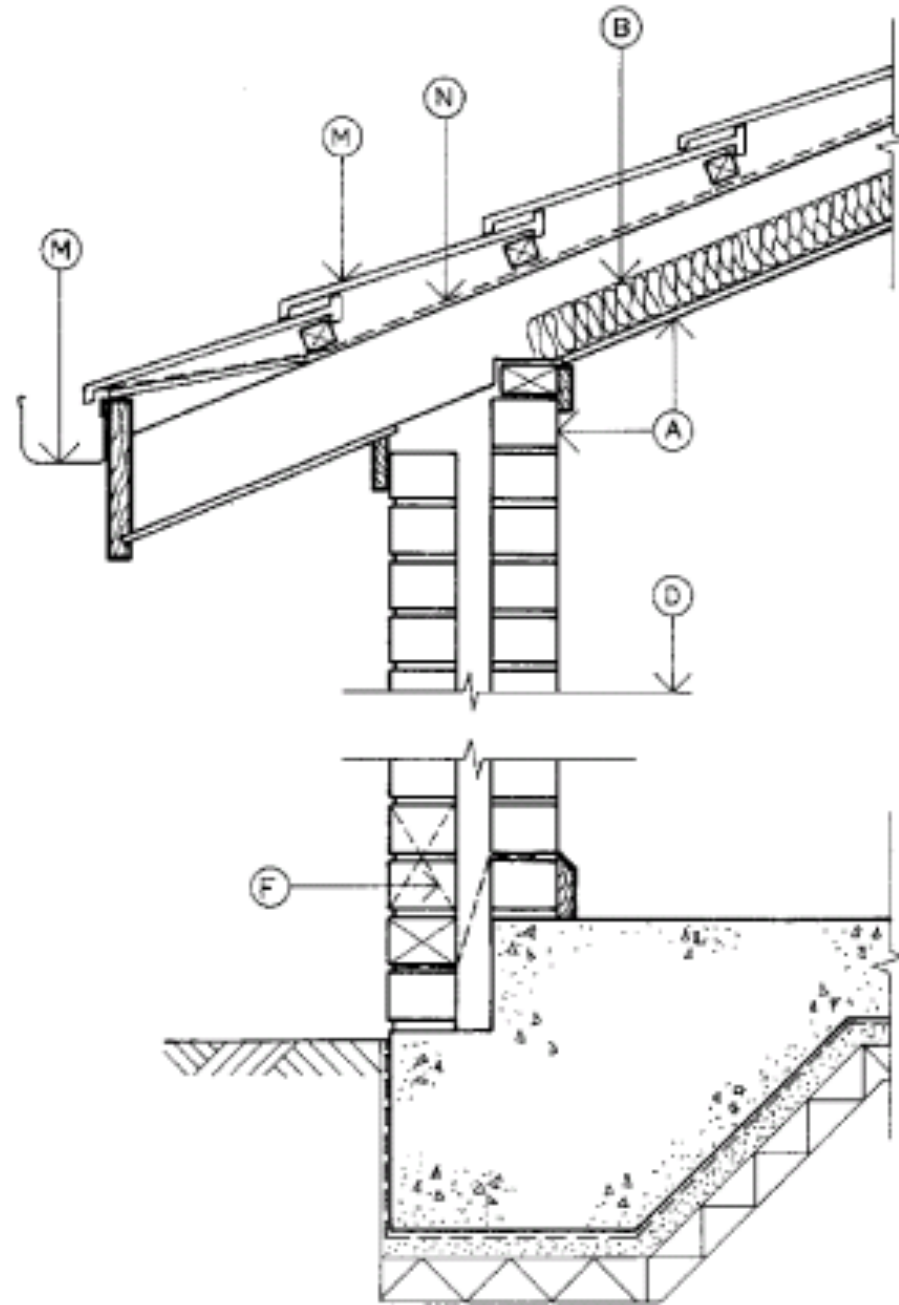


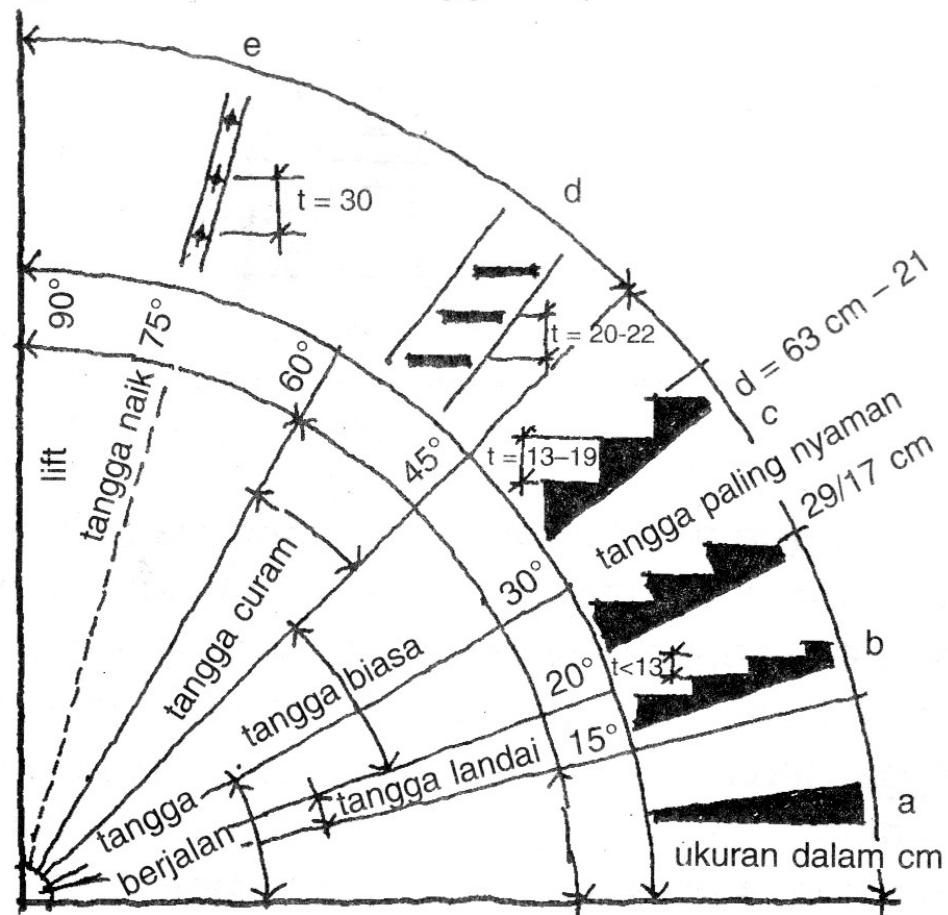
PERENCANAAN TEKNOLOGI
& SISTEM BANGUNAN
(PTSB) 03

DRAWINGS

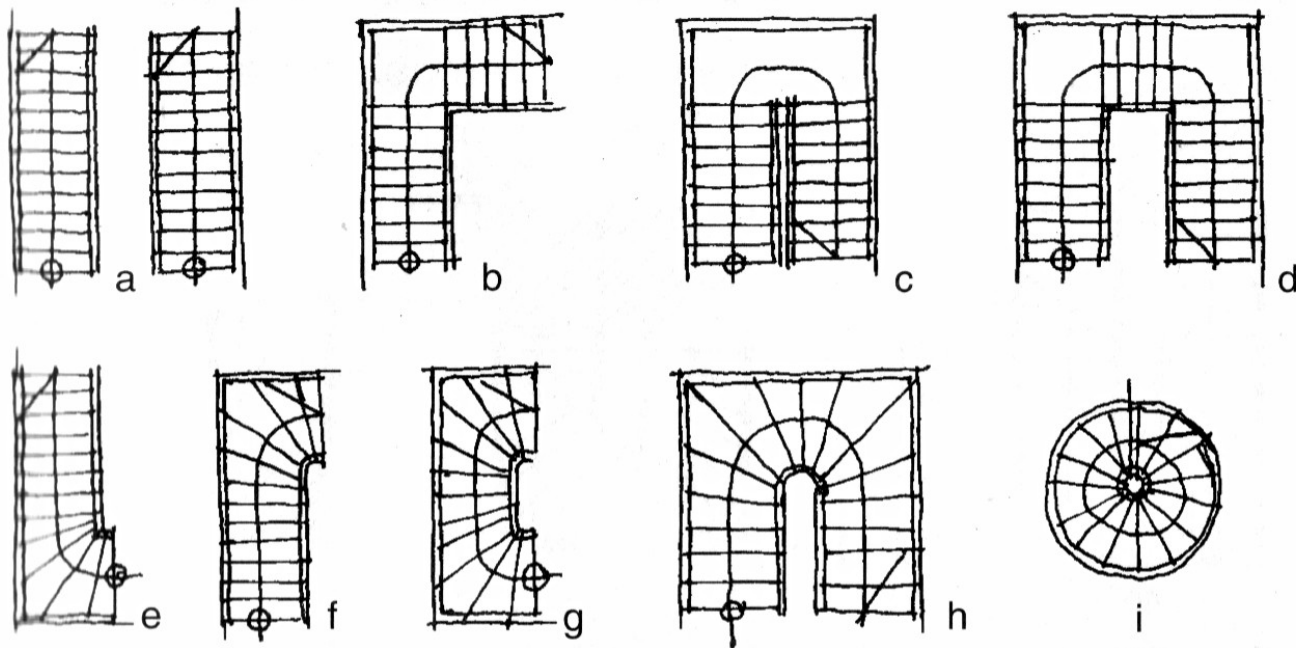
Detail – *an enlarged view of a portion of drawing*



- a) Lantai miring
6° – 20°
- b) Tangga landai
20° – 24°
- c) Tangga biasa
24° – 45°
- d) Tangga curam,
tangga hemat
45° – 75°
- e) Tangga naik,
tangga tingkat
75° – 90°



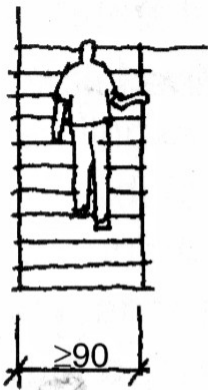
TANGGA



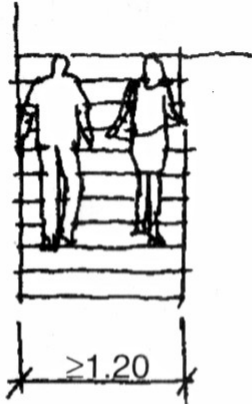
Ber macam bentuk tangga

a) tangga biasa, tangga lurus; b) tangga dengan bordes seperempat; c) tangga dengan bordes; d) tangga dengan dua bordes seperempat; e) tangga dengan belokan seperempat bawah; f) tangga dengan belokan seperempat atas; g) tangga dengan dua belokan seperempat; h) tangga dengan belokan setengah; i) tangga lingkaran.

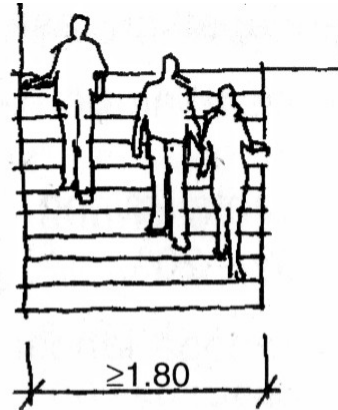
TANGGA



Tangga darurat, langkah naik maksimal 20 cm

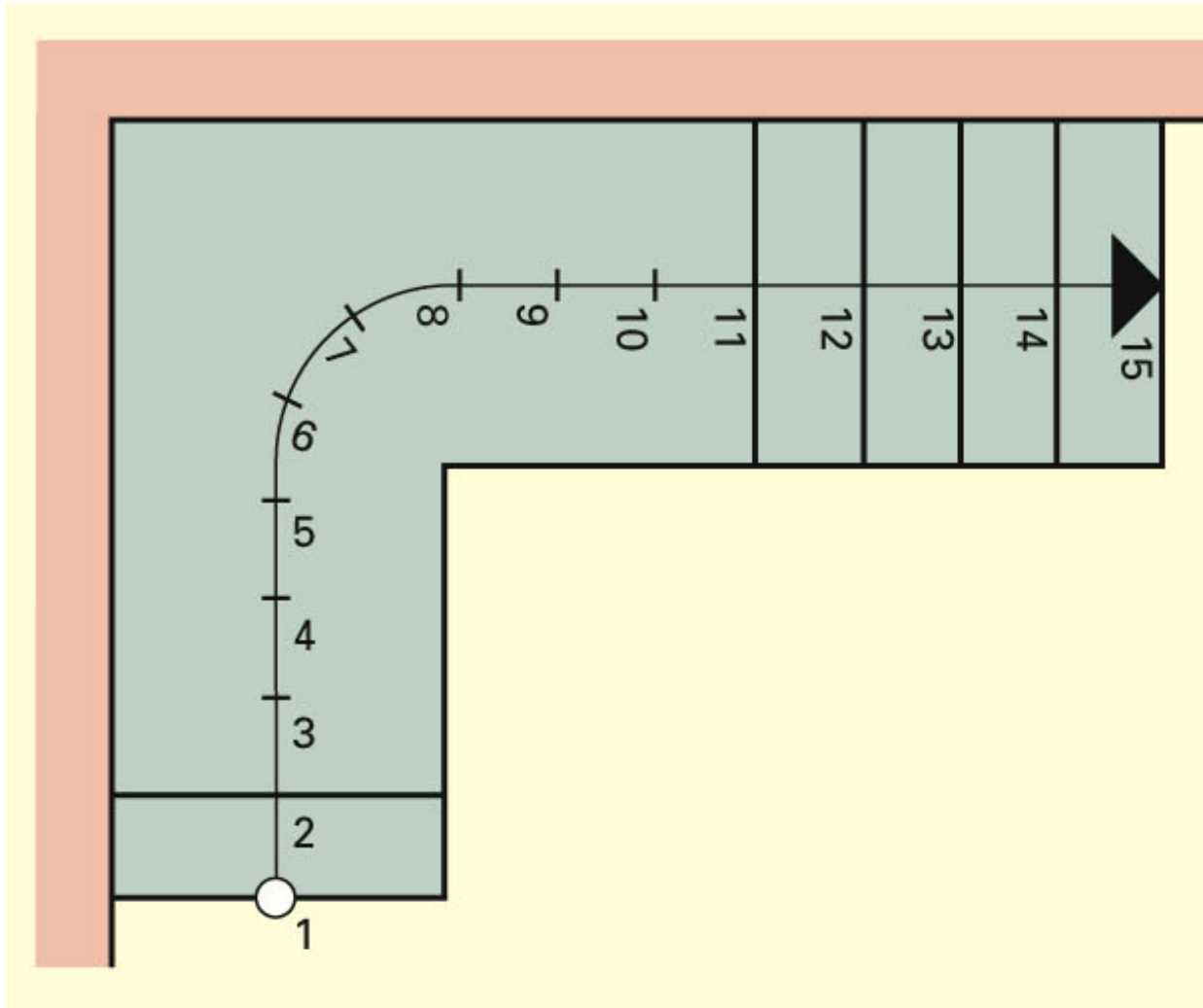


Tangga rumah tinggal, langkah naik sebaiknya tidak melebihi 18 cm

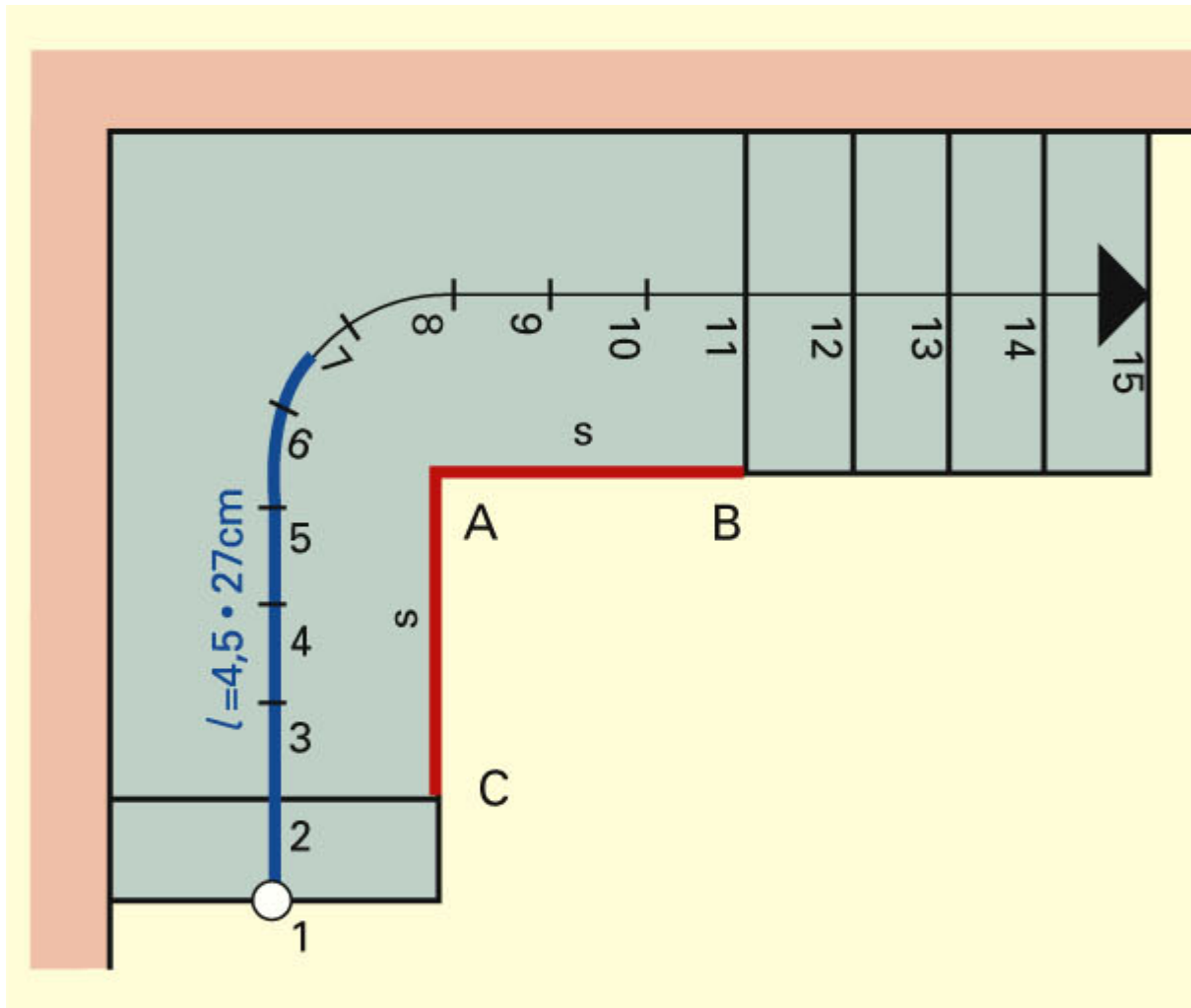


Tangga rumah susun, per-tokoan, atau perkantoran umum, langkah naik < 18 cm

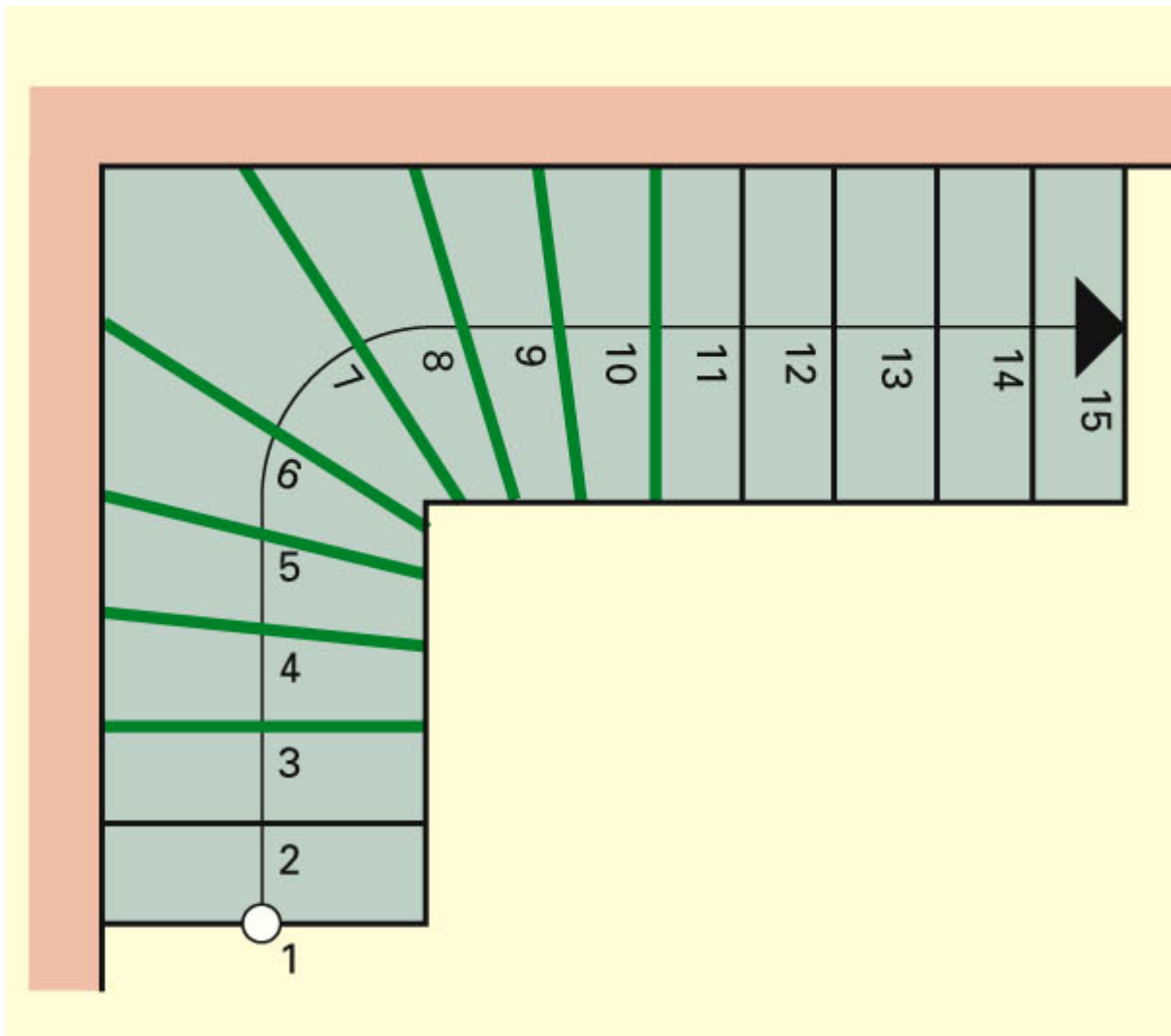
TANGGA



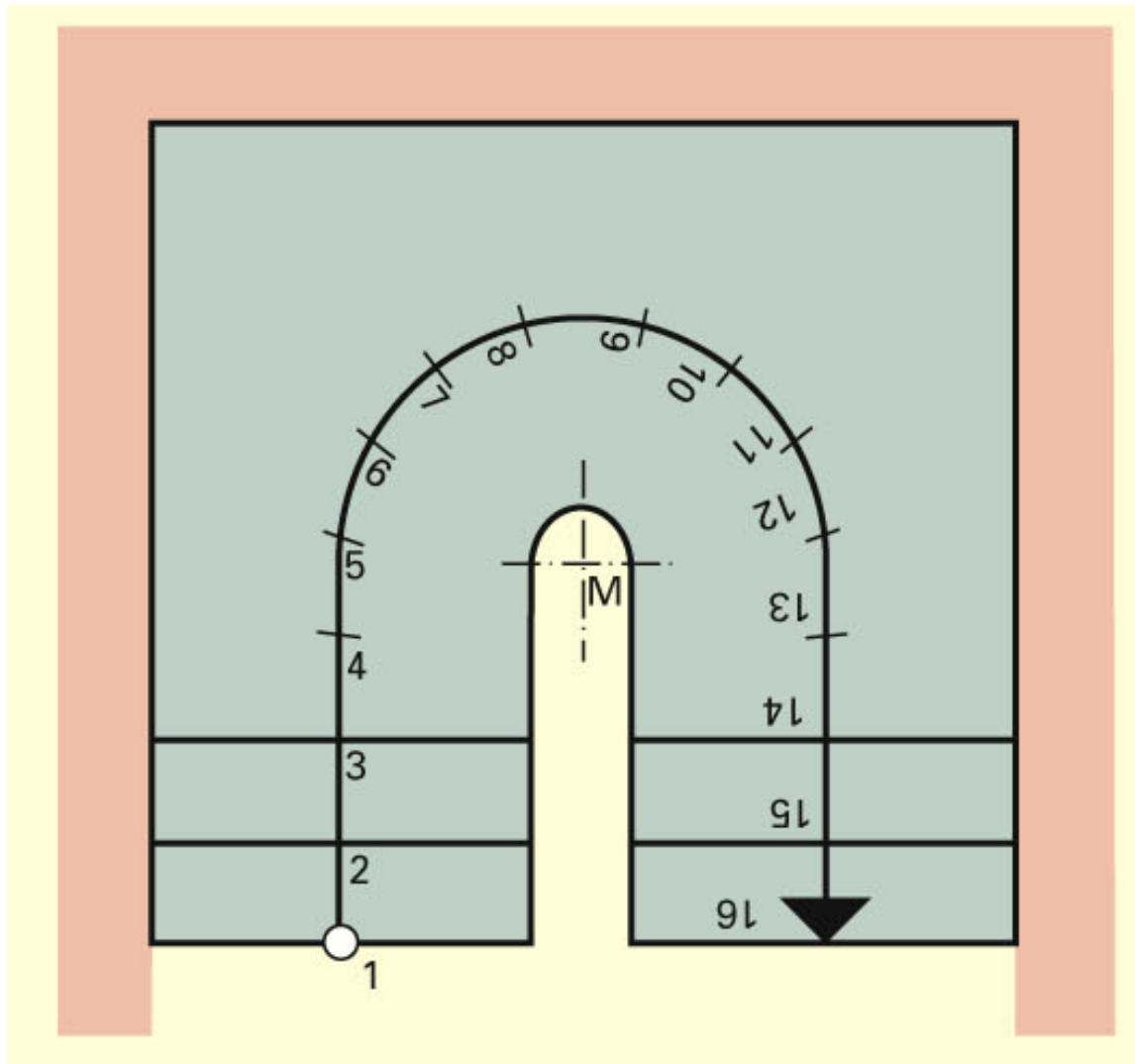
TANGGA



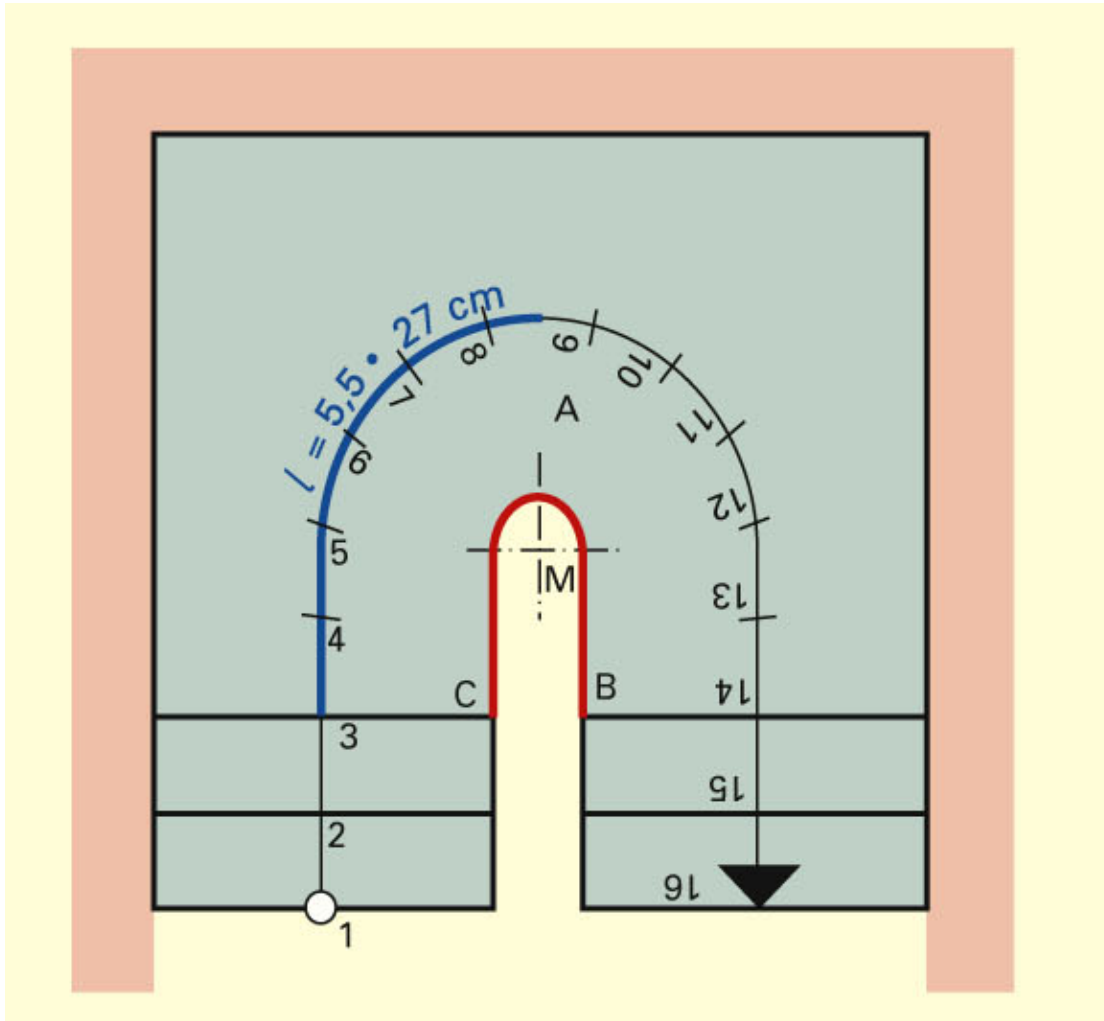
TANGGA



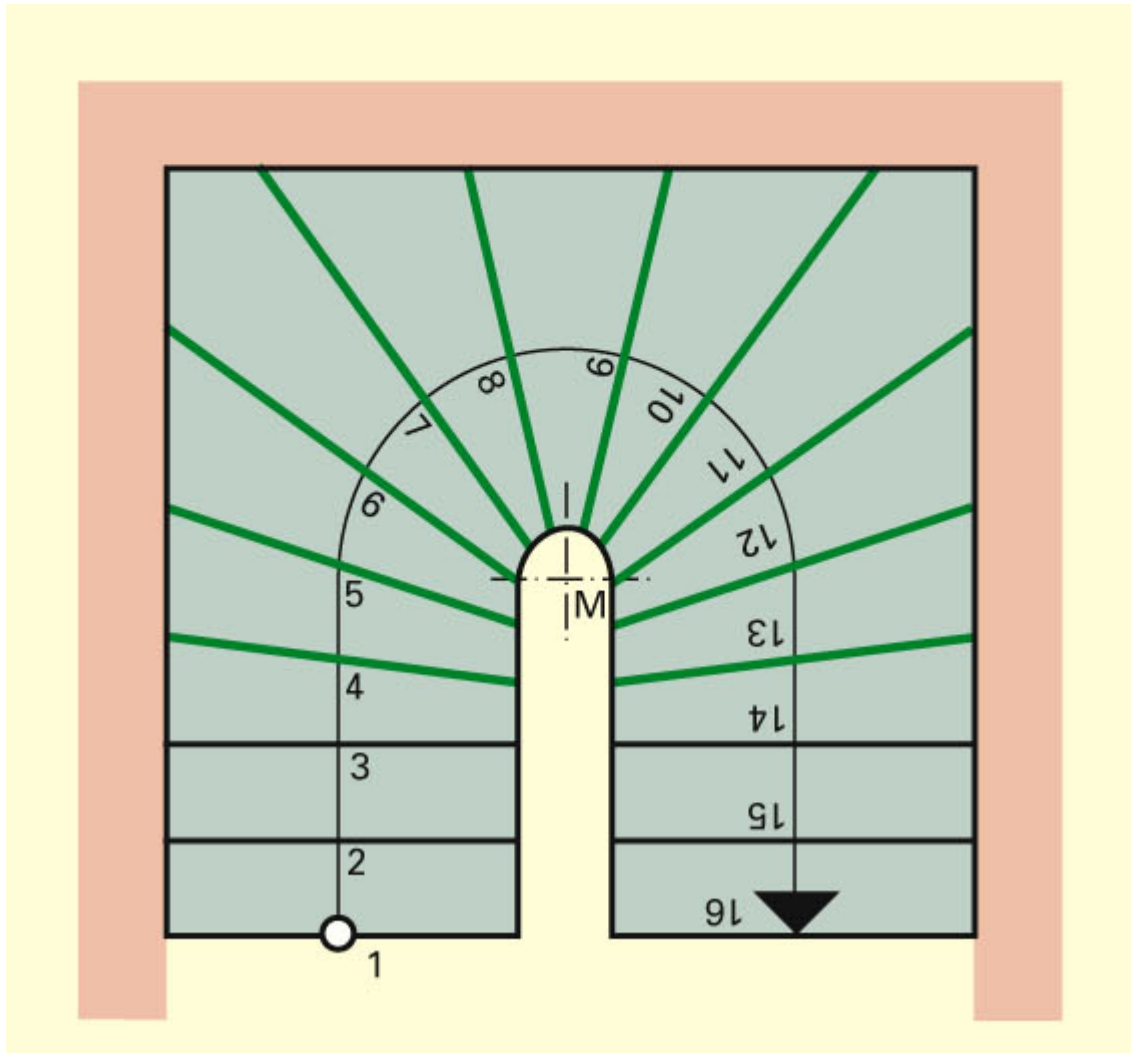
TANGGA



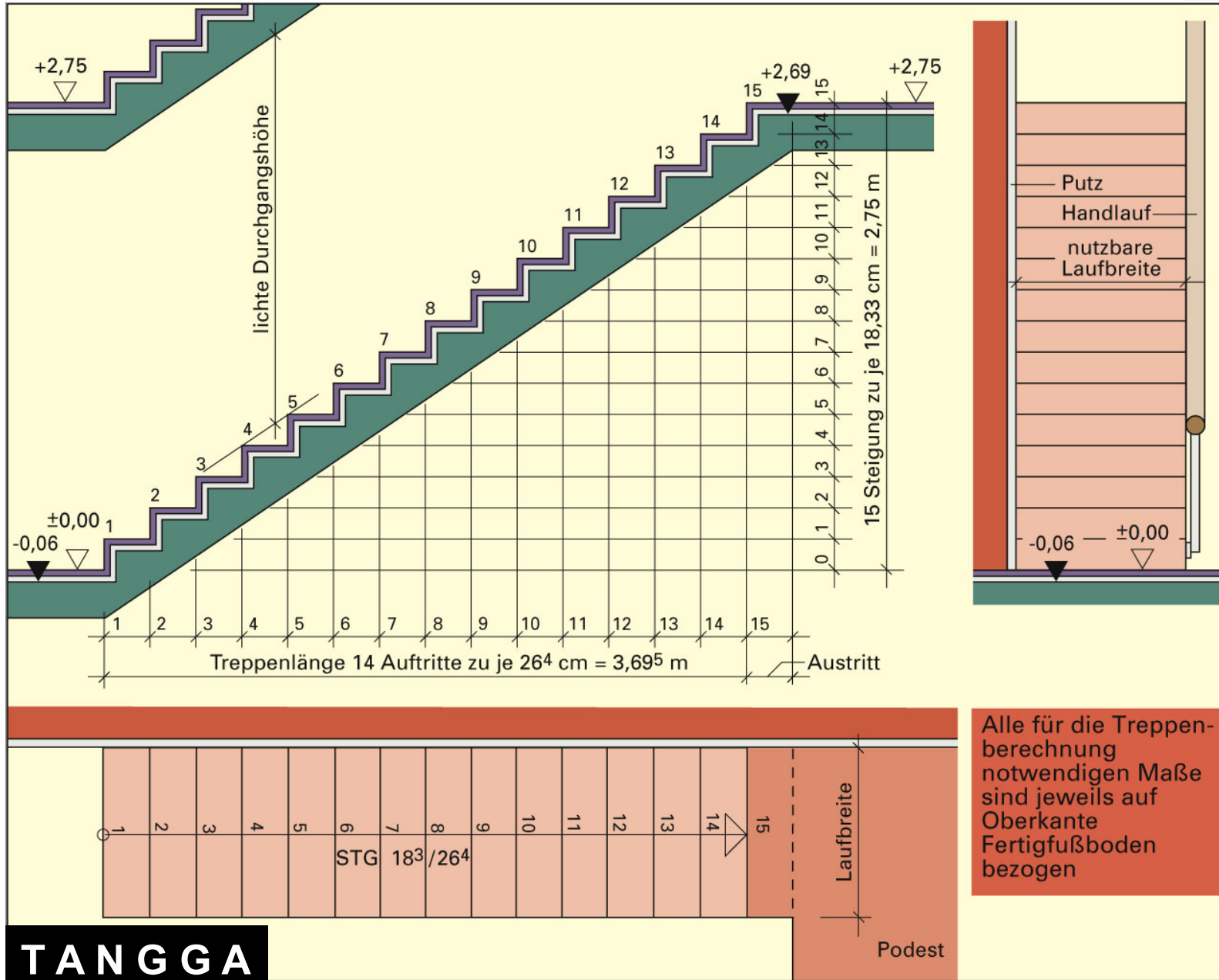
TANGGA



TANGGA



TANGGA

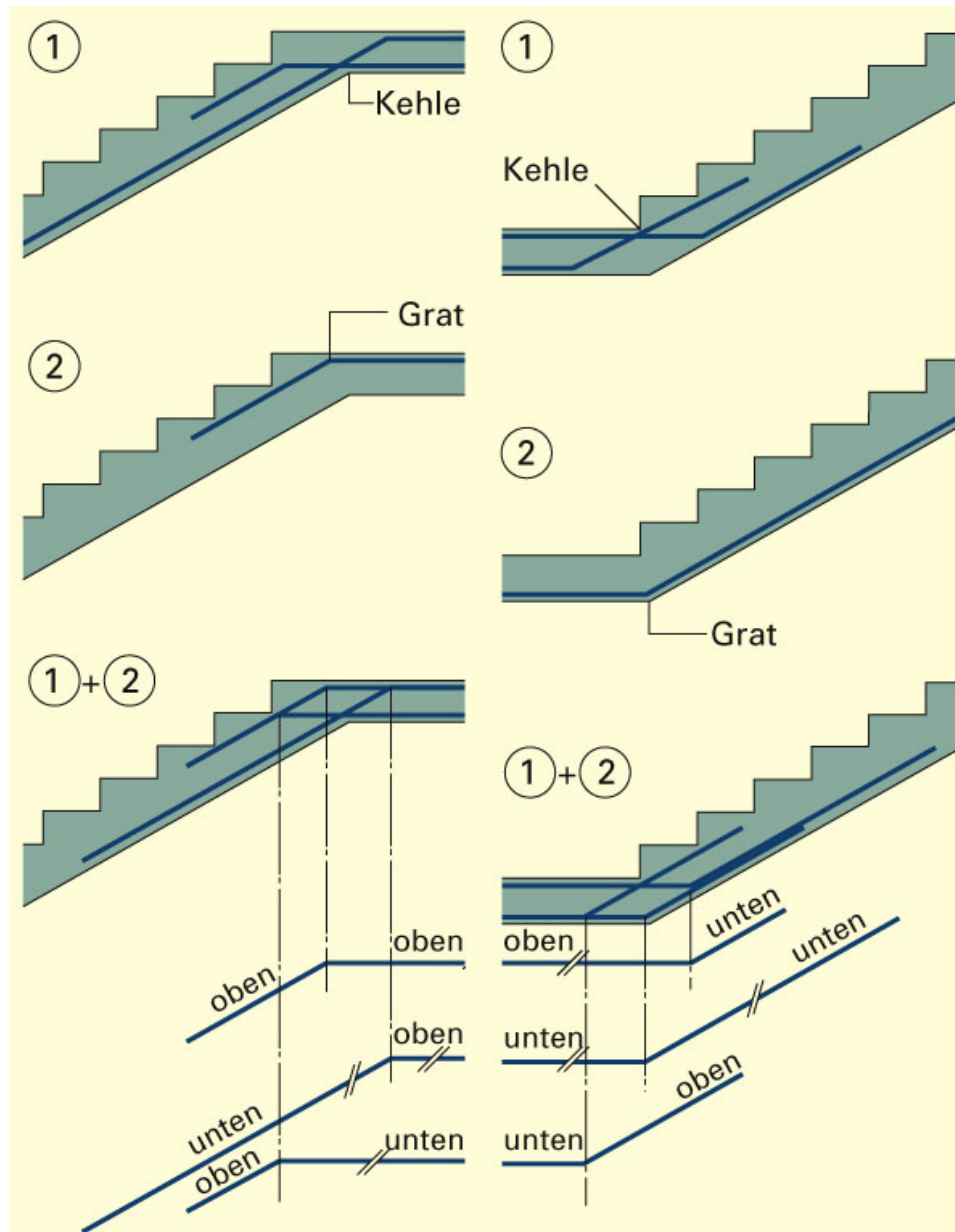


TANGGA

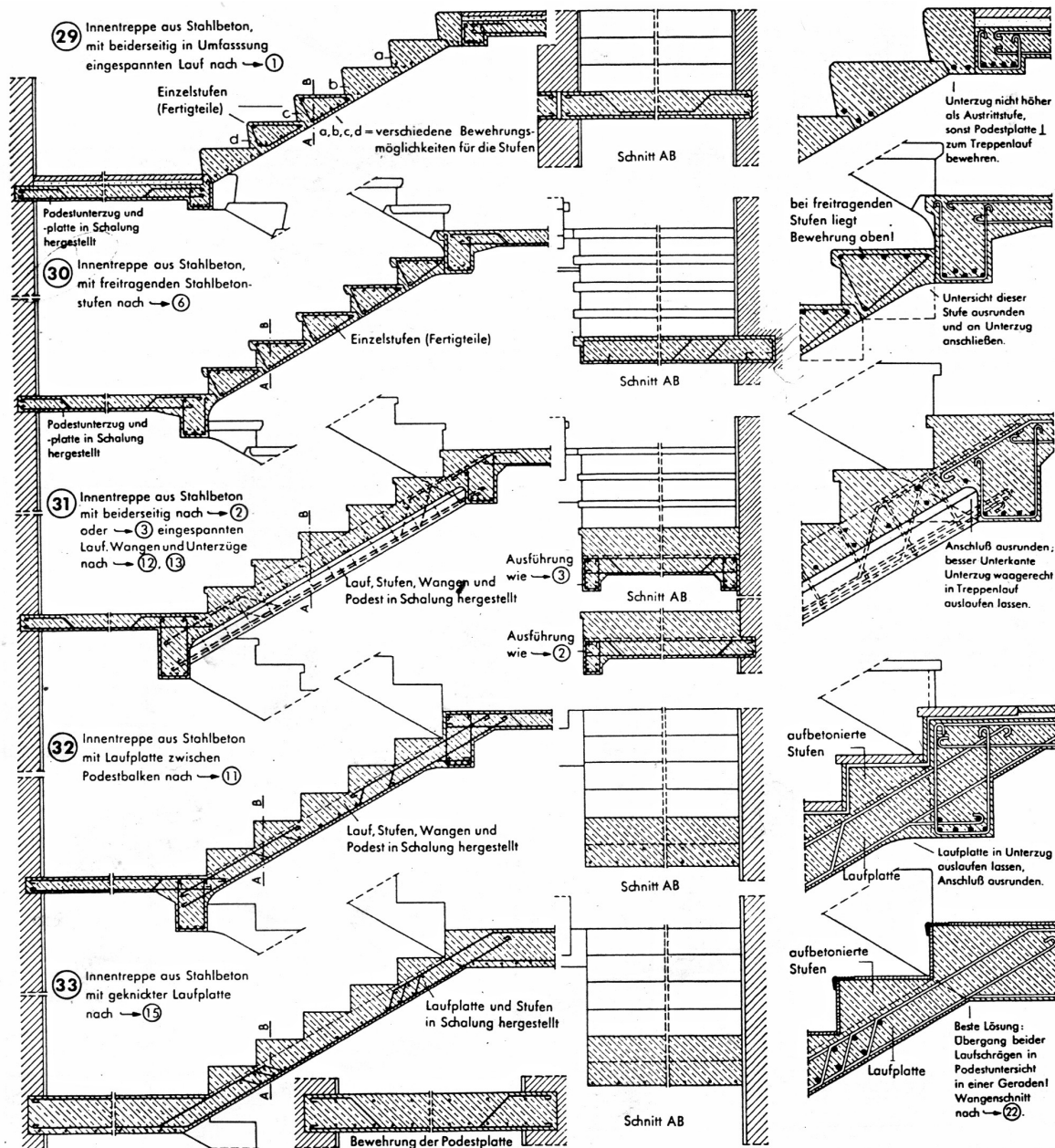
Alle für die Treppenberechnung notwendigen Maße sind jeweils auf Oberkante Fertigfußboden bezogen

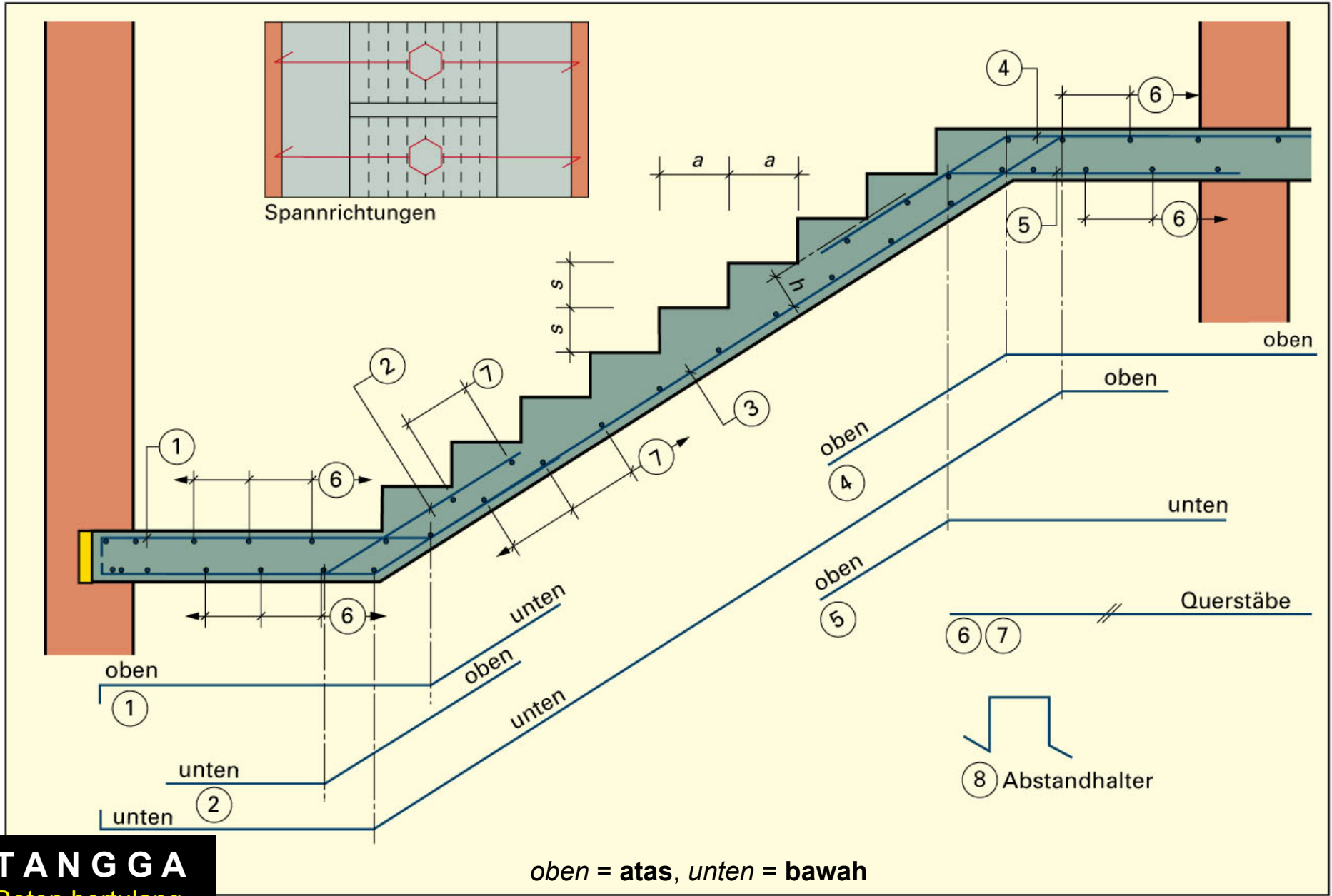
TANGGA

Beton bertulang



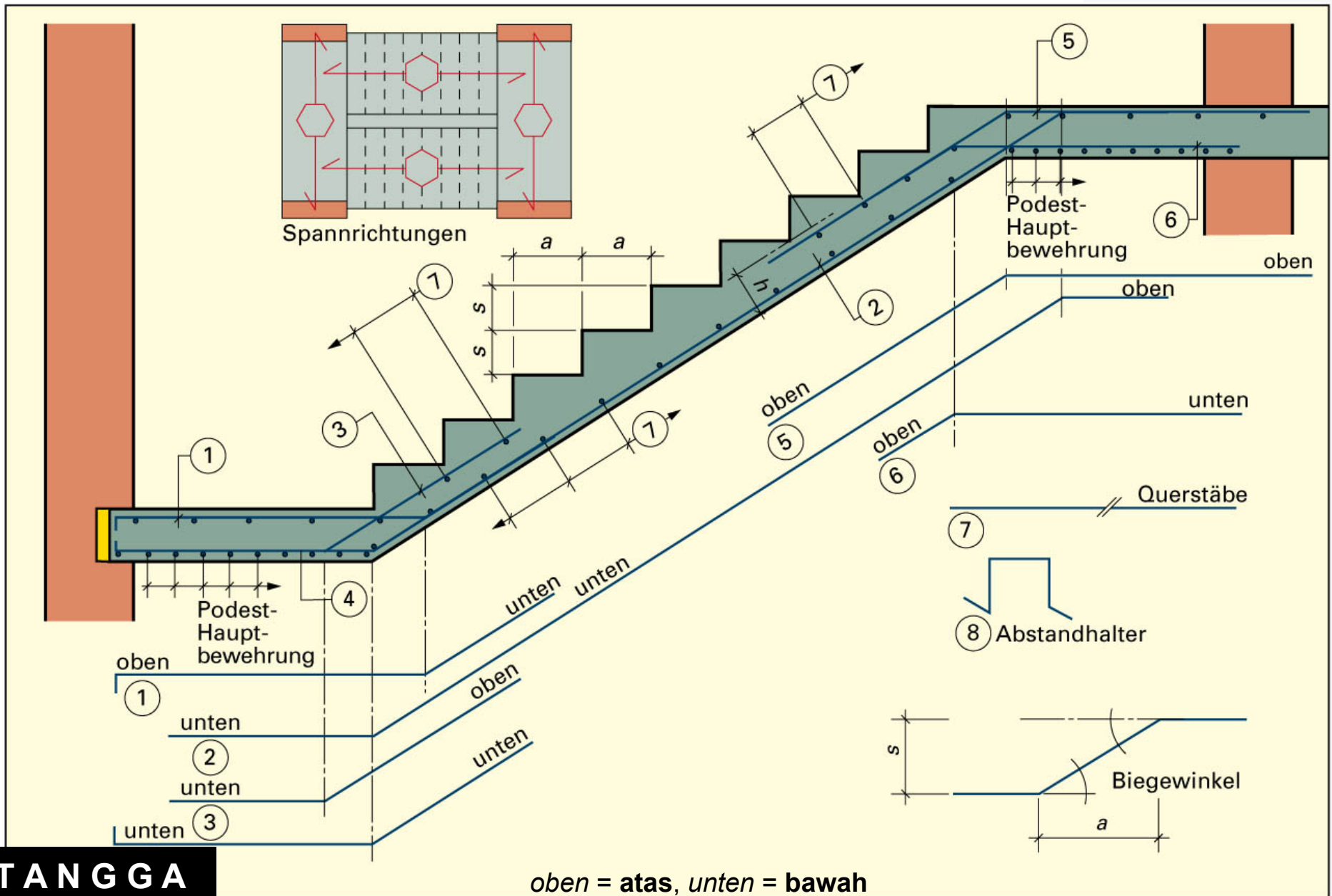
oben = atas, unten = bawah, Kehle = bagian tengah, Grat = bagian tepi





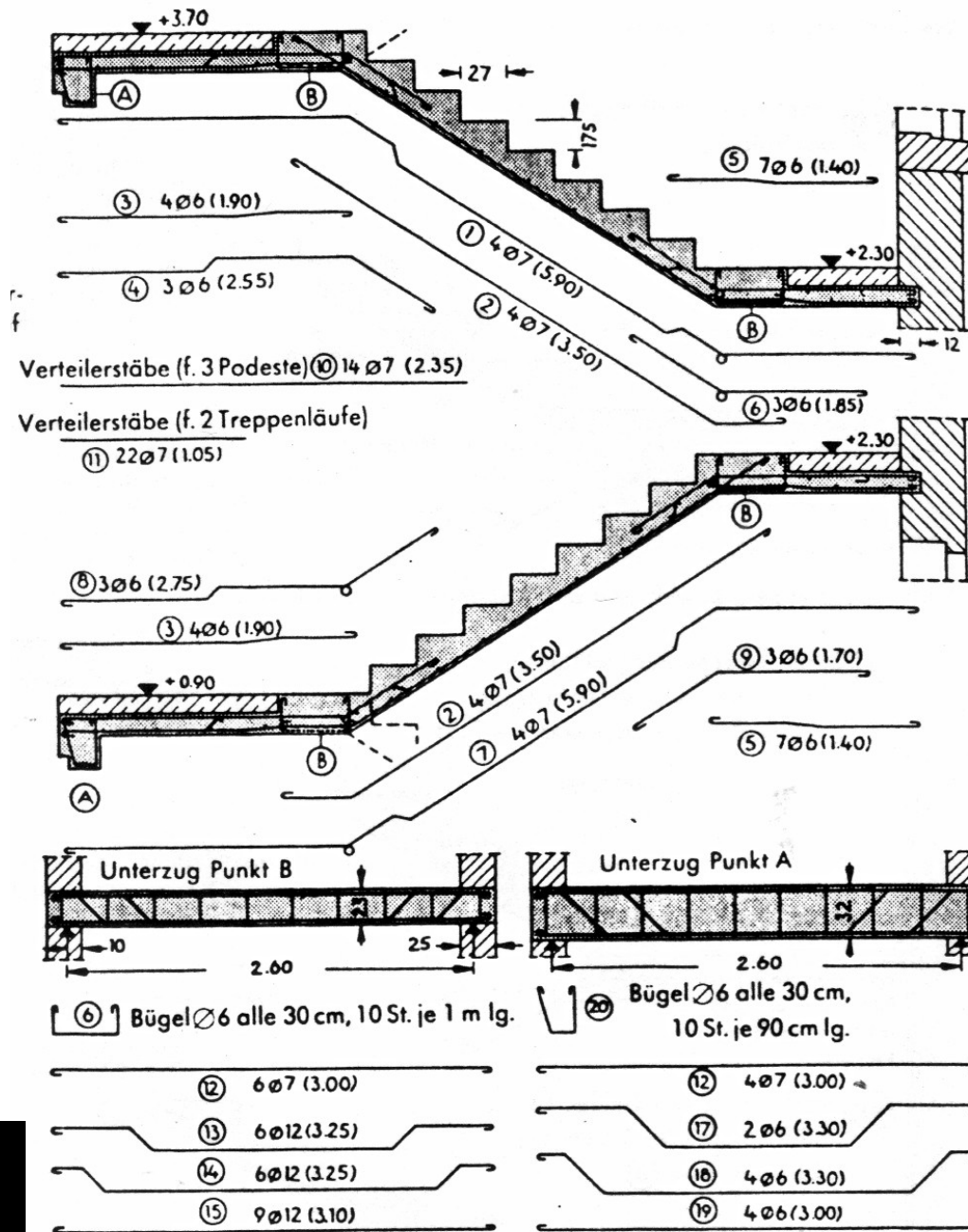
TANGGA
Beton bertulang

oben = atas, unten = bawah

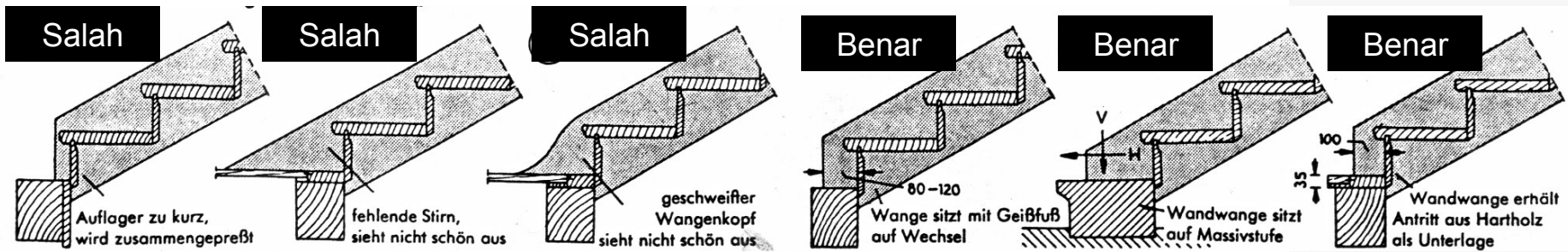
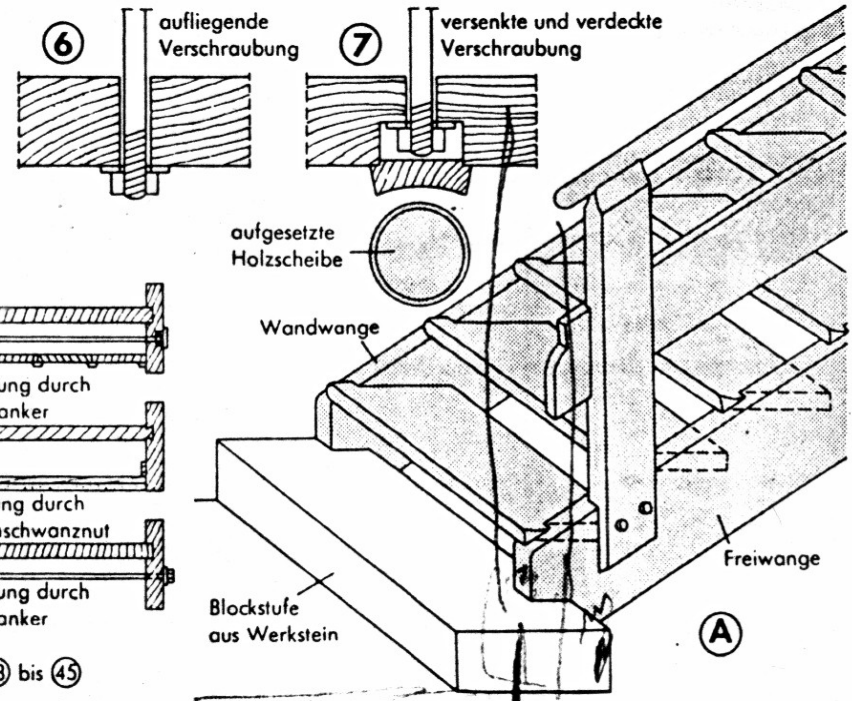
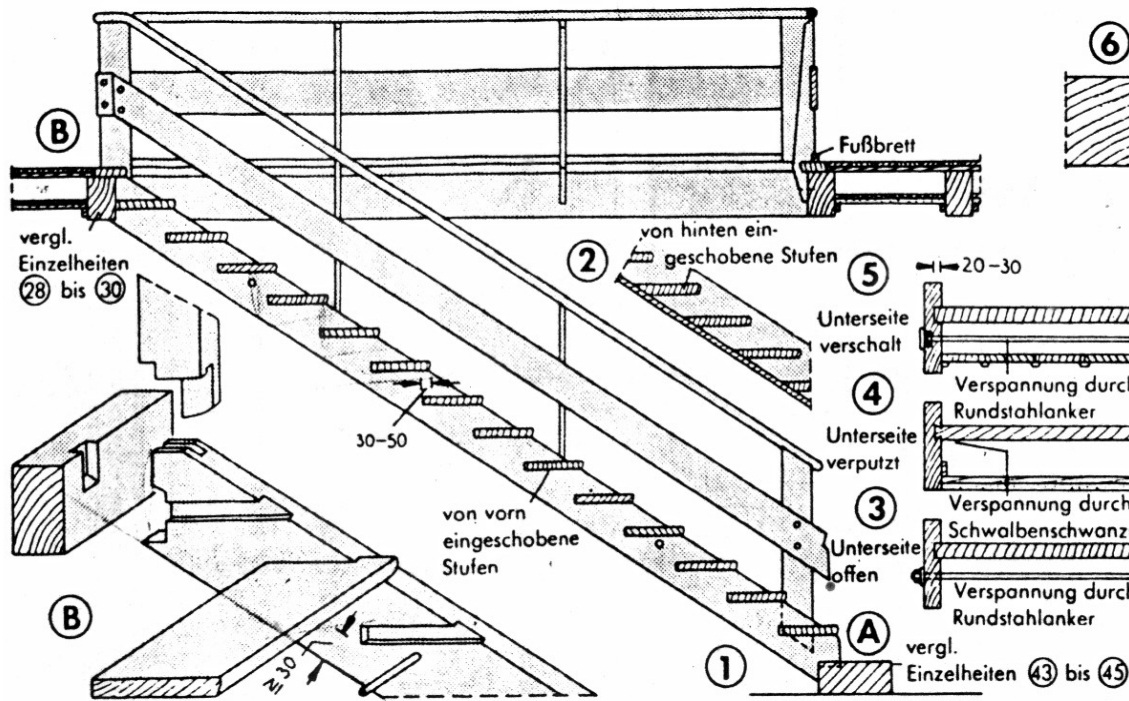


TANGGA
Beton bertulang

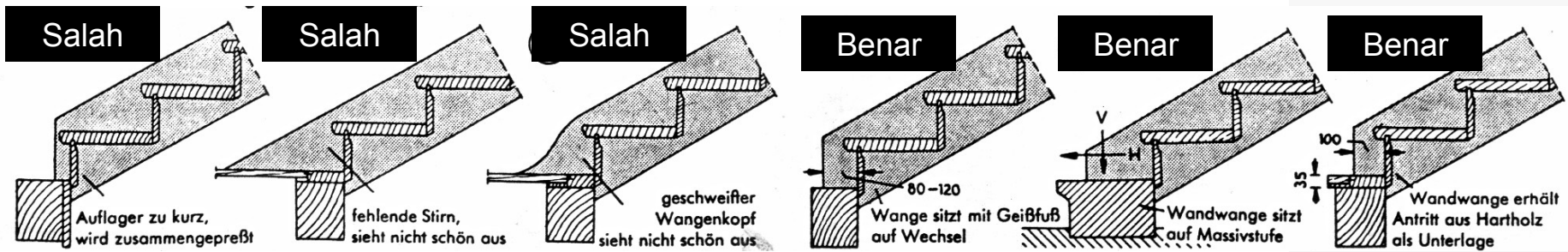
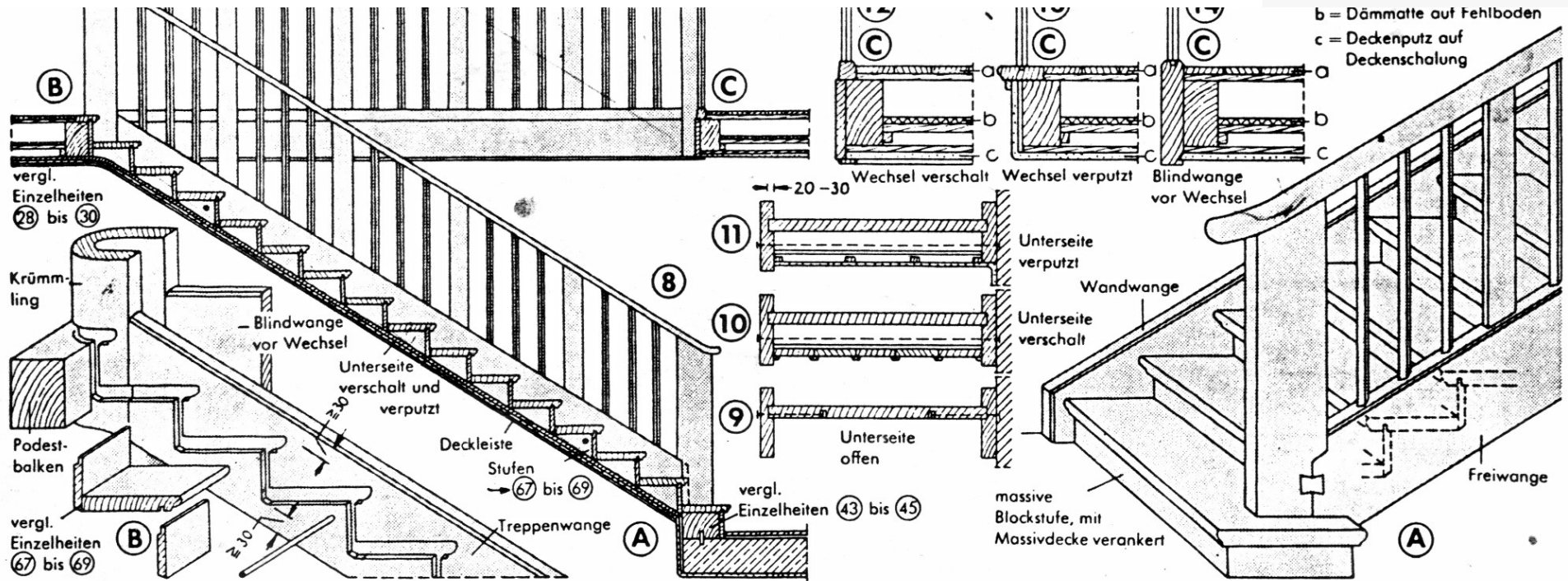
oben = atas, unten = bawah



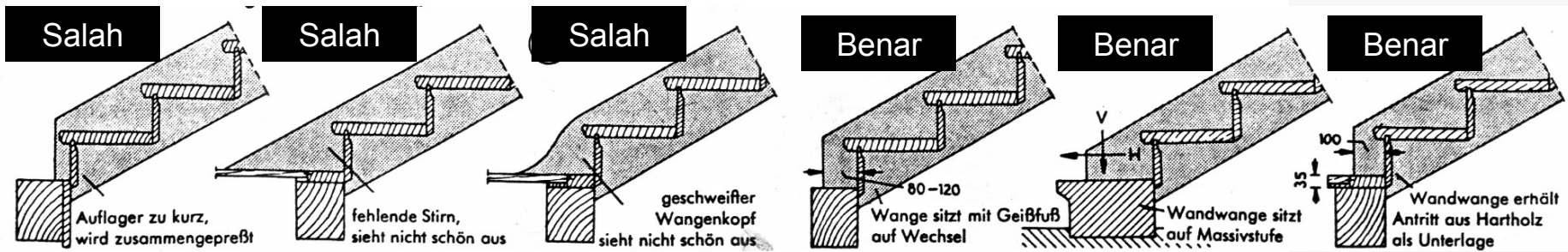
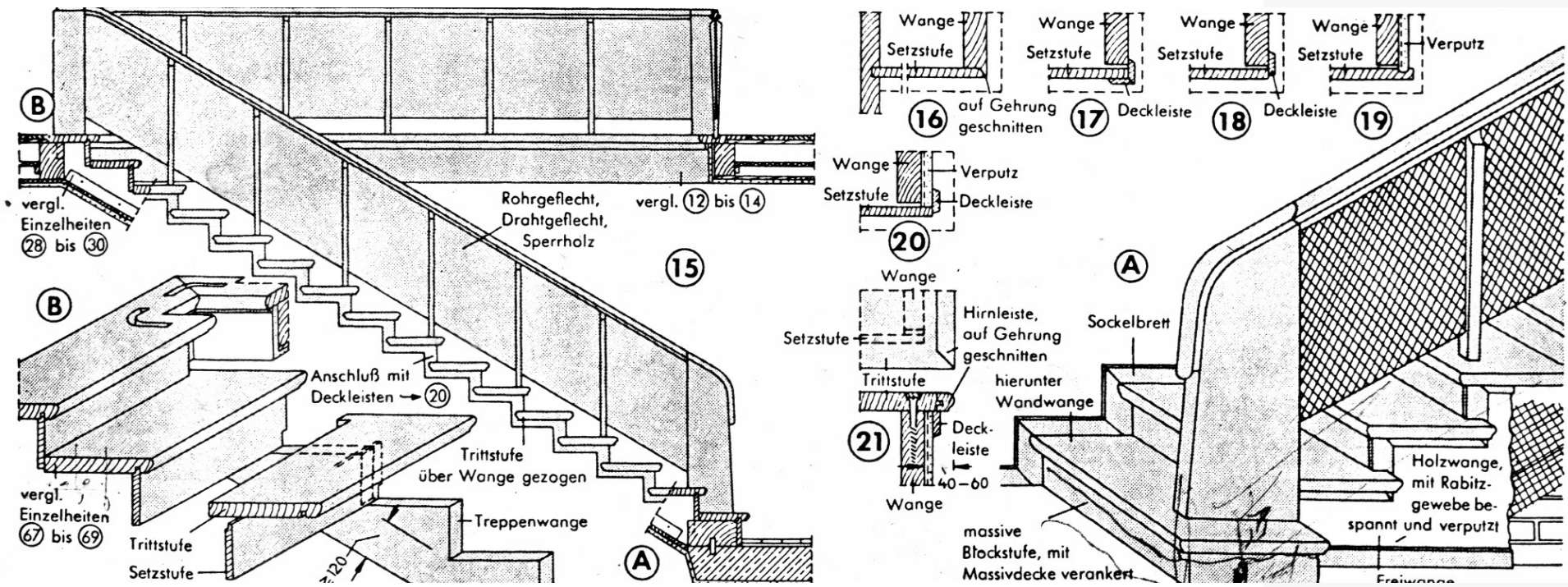
TANGGA
Beton bertulang



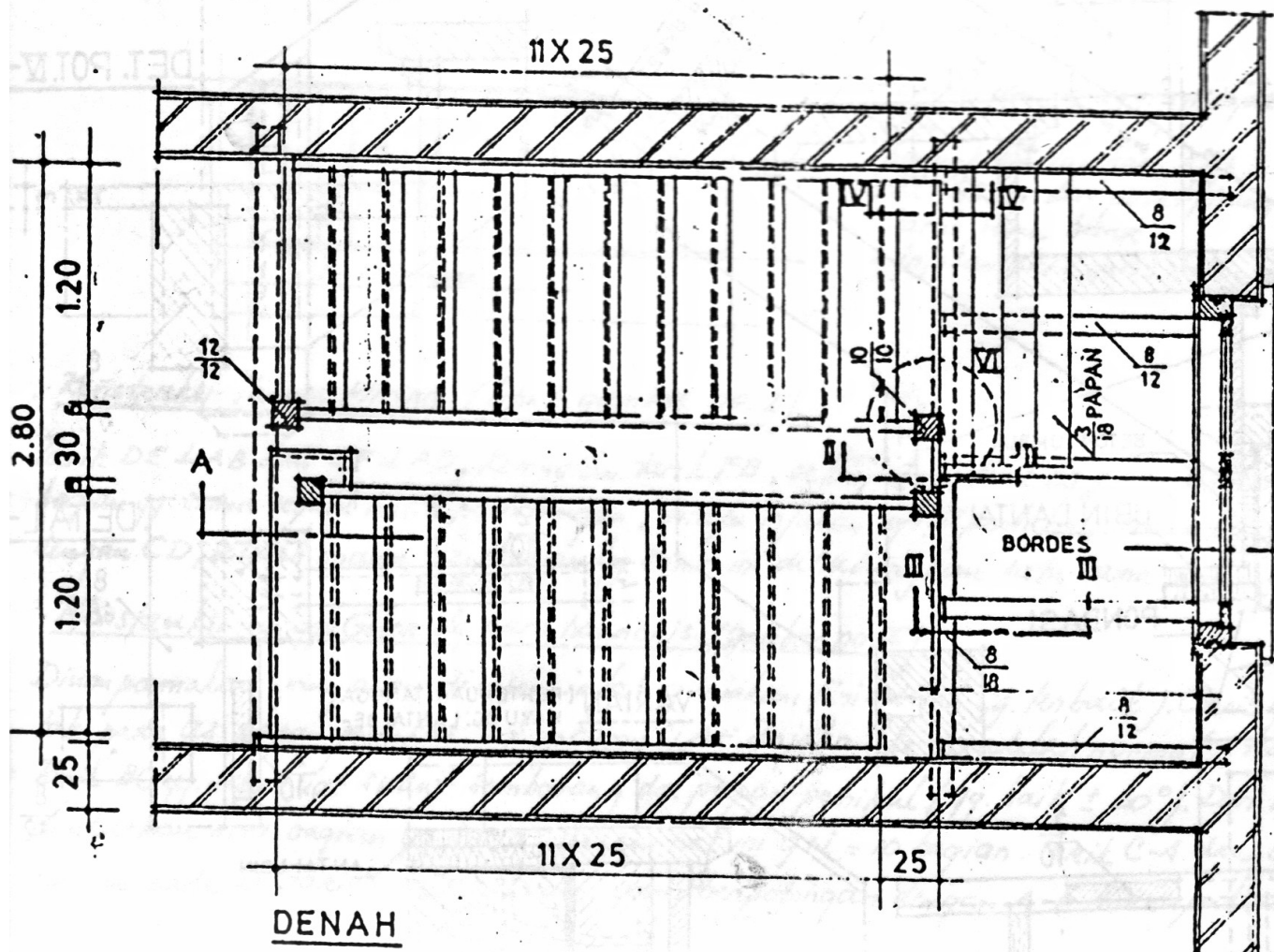
TANGGA
 K a y u



TANGGA
 K a y u



TANGGA
K a y u

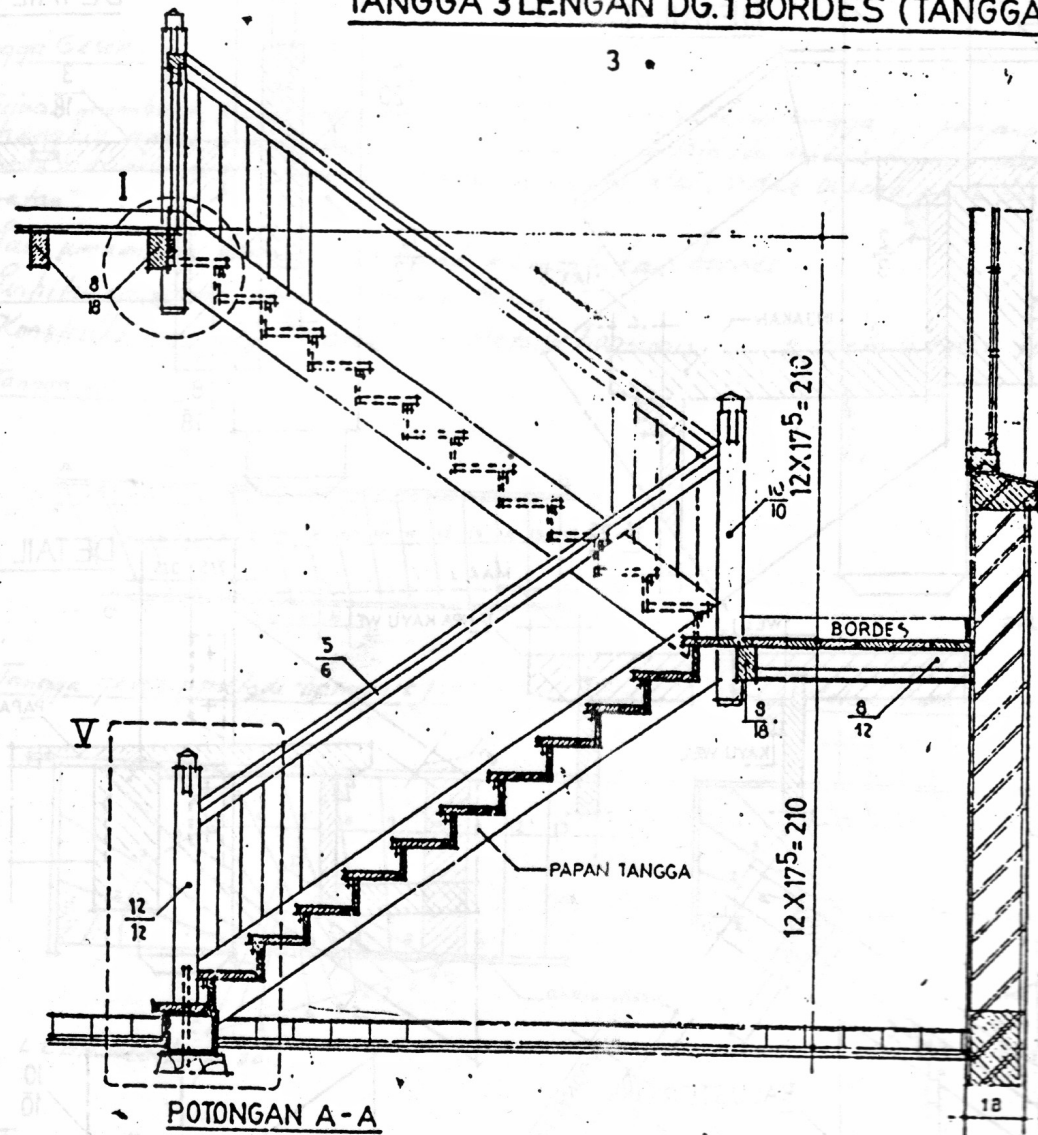


DENAH

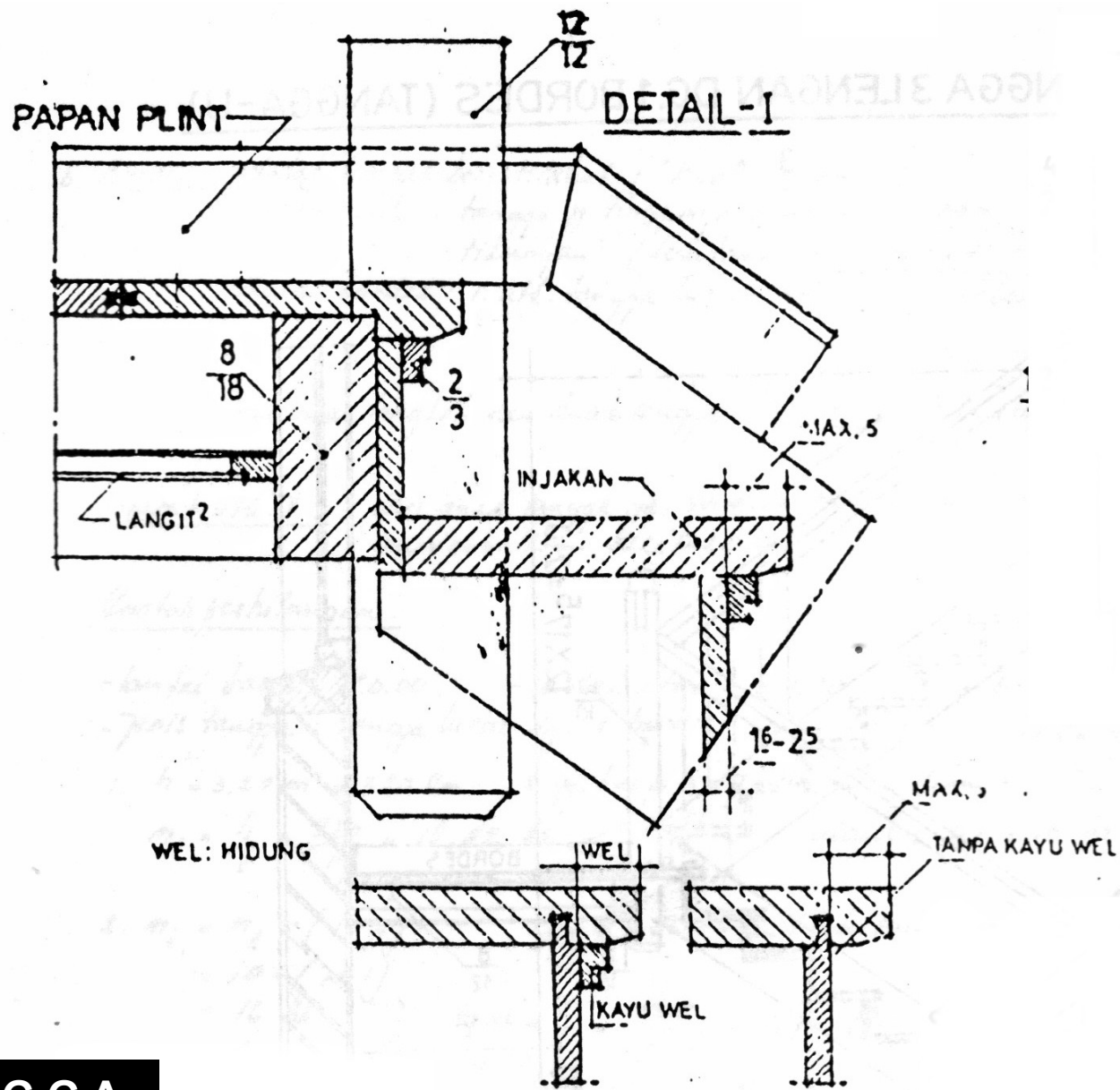
TANGGA
K a y u

TANGGA 3 LENGAN DG.1 BORDES (TANGGA-U).

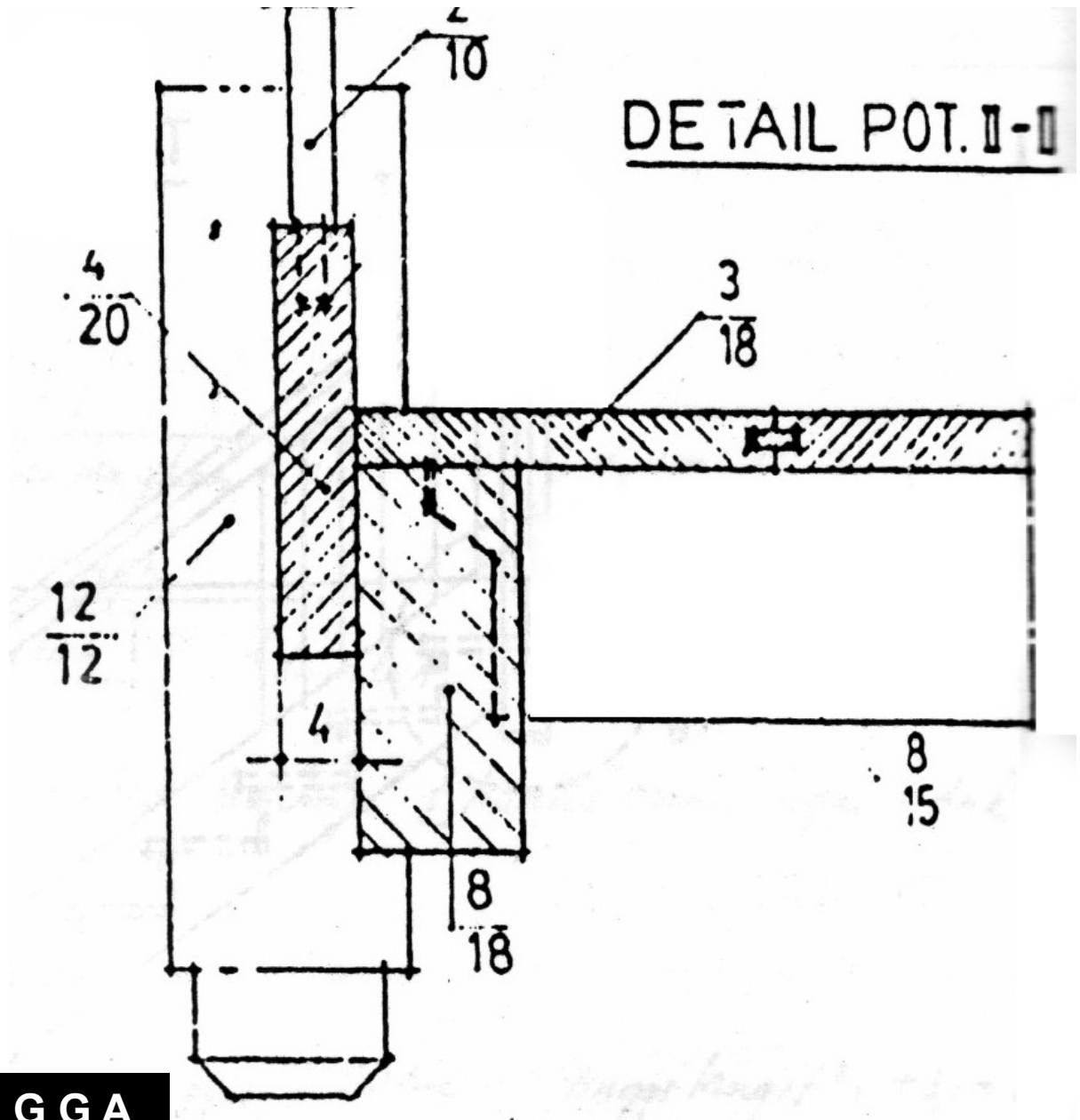
3 •



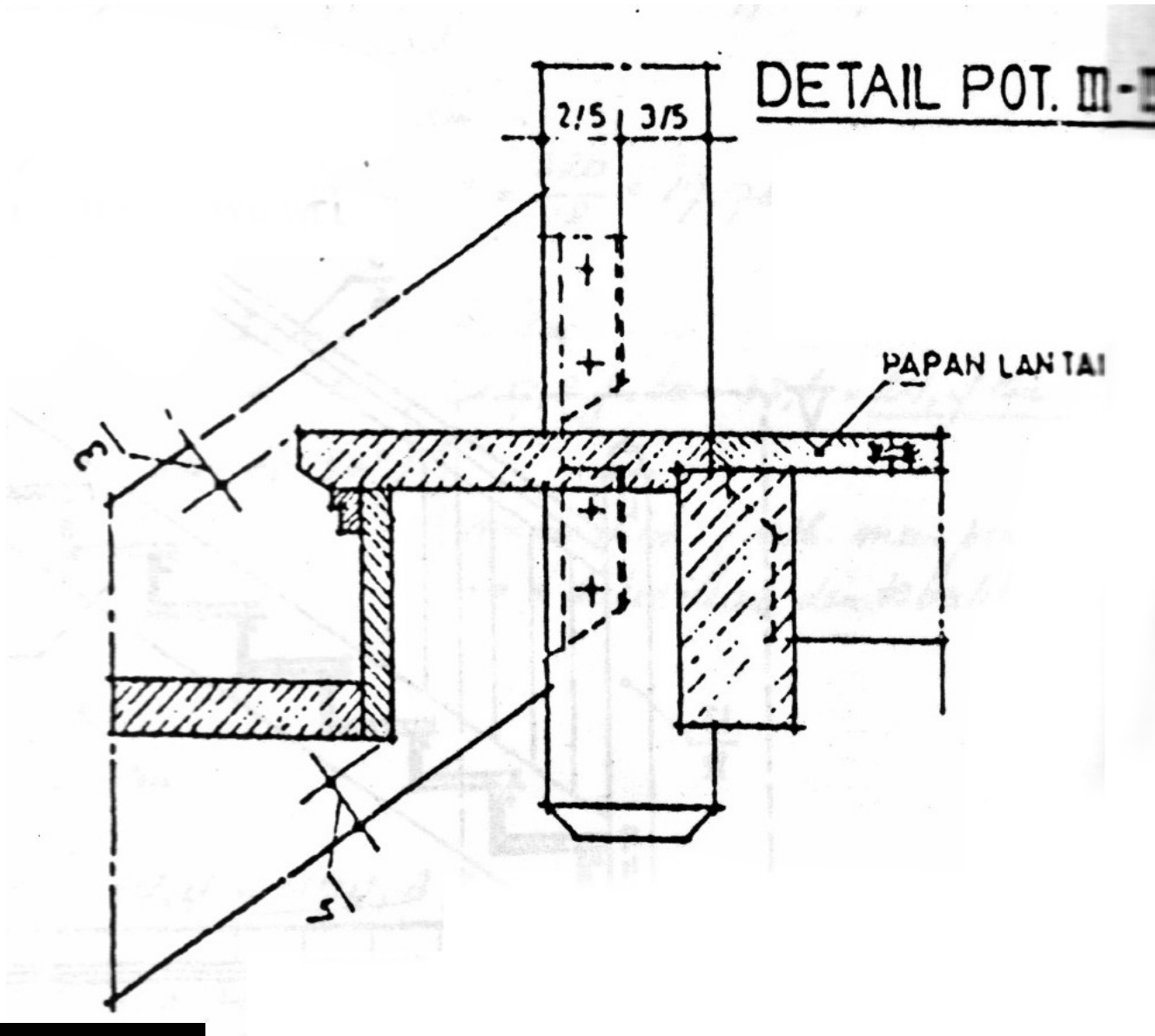
TANGGA
K a y u



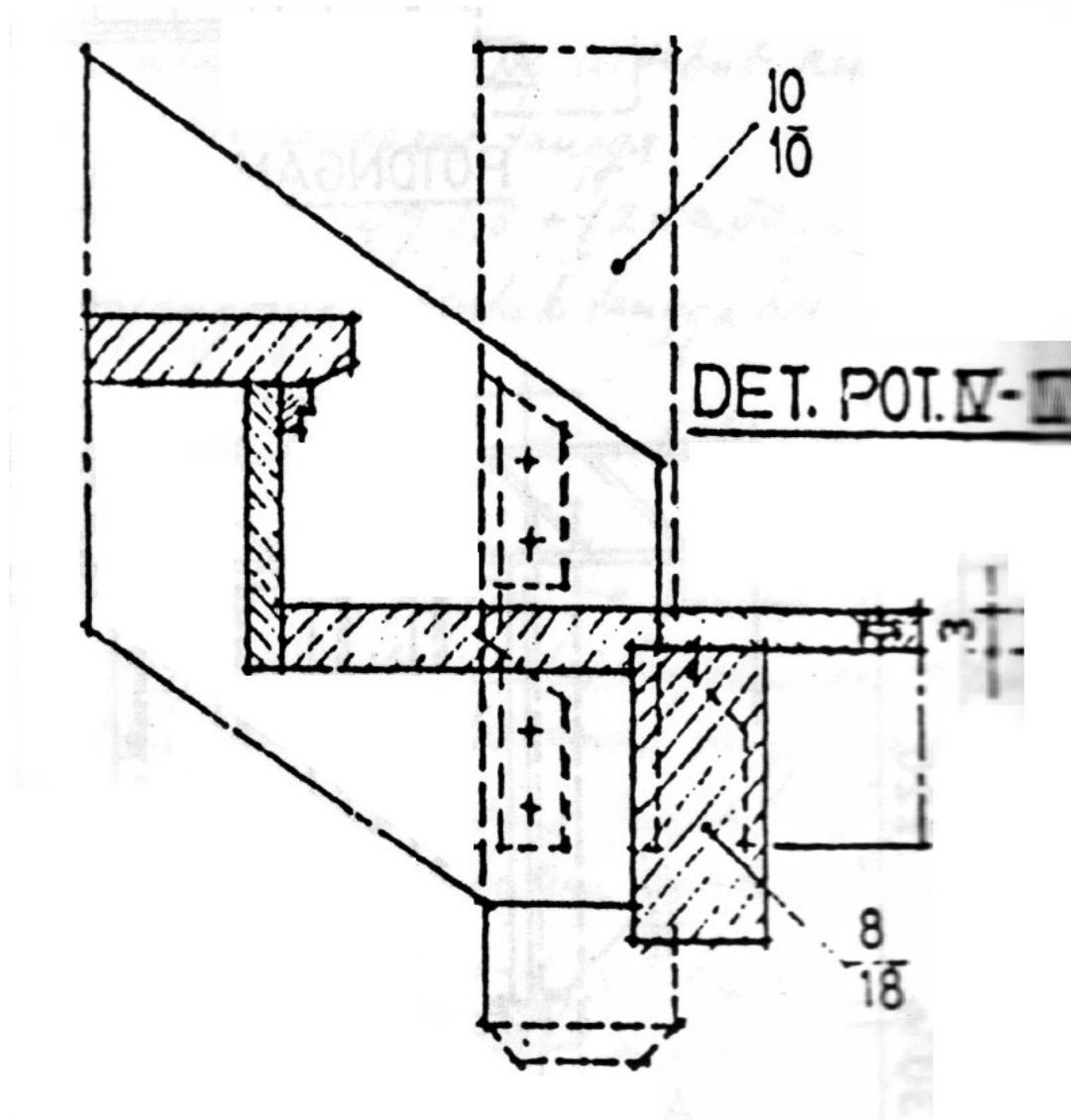
TANGGA
 K a y u



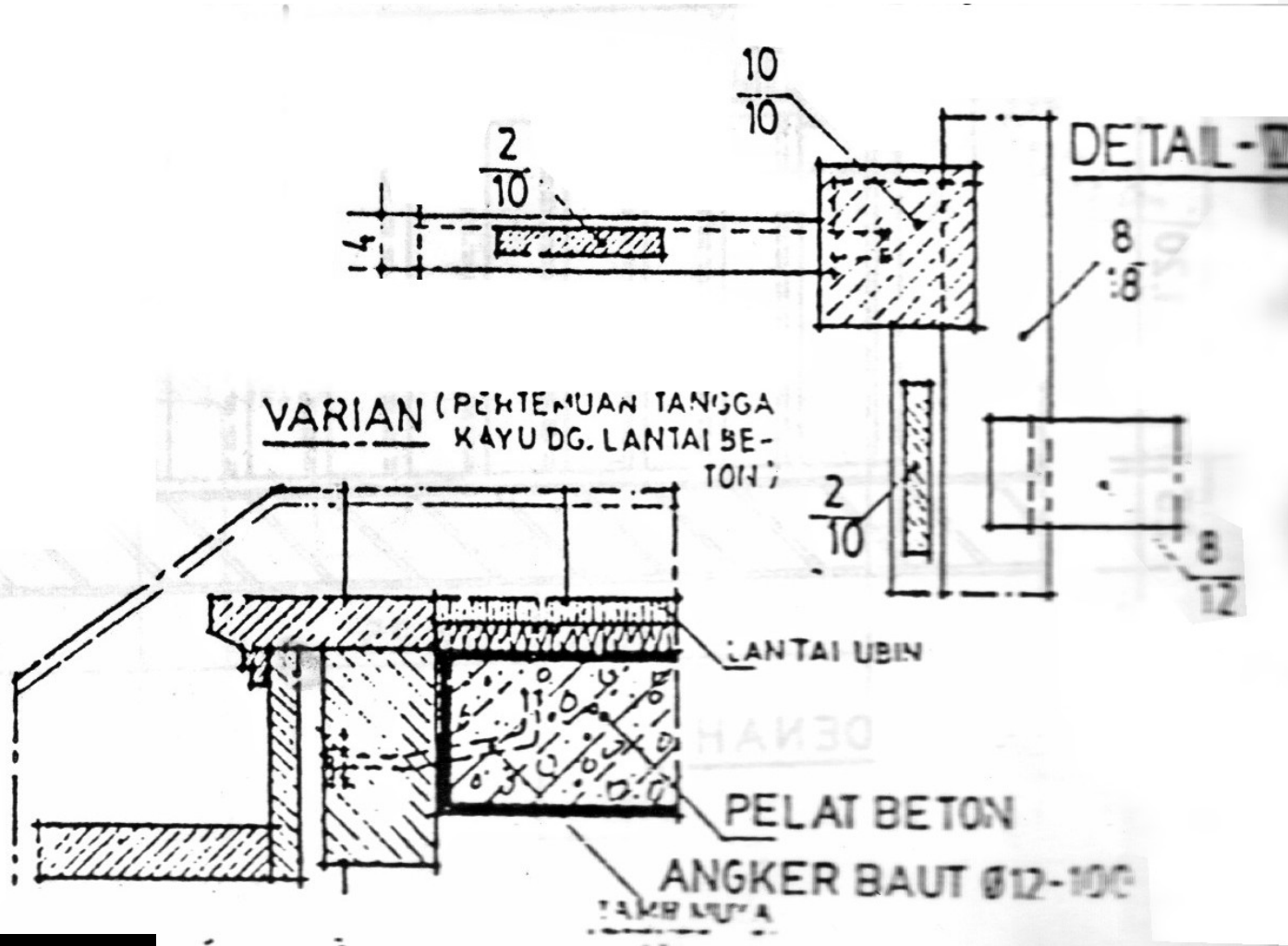
TANGGA
K a y u



TANGGA
K a y u

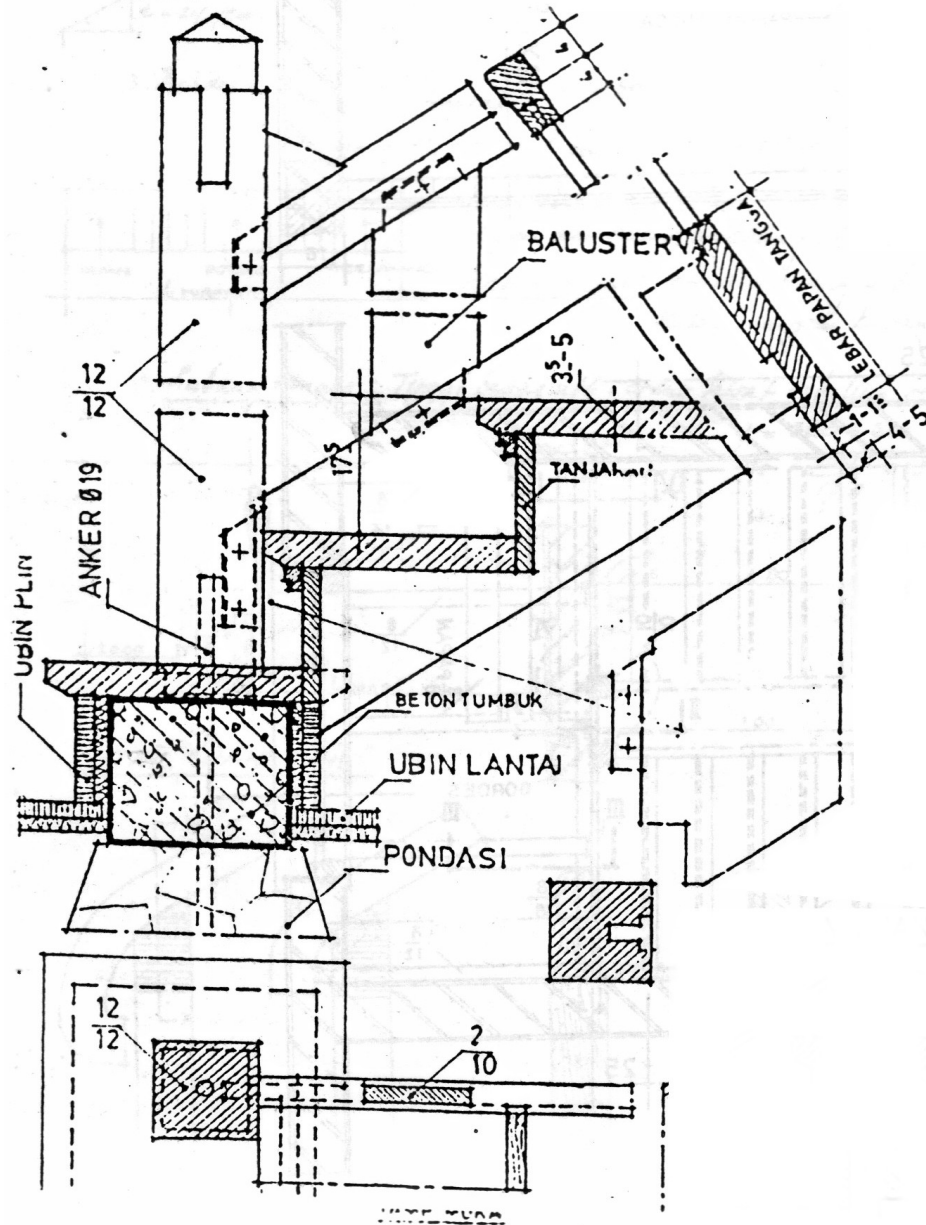


TANGGA
K a y u

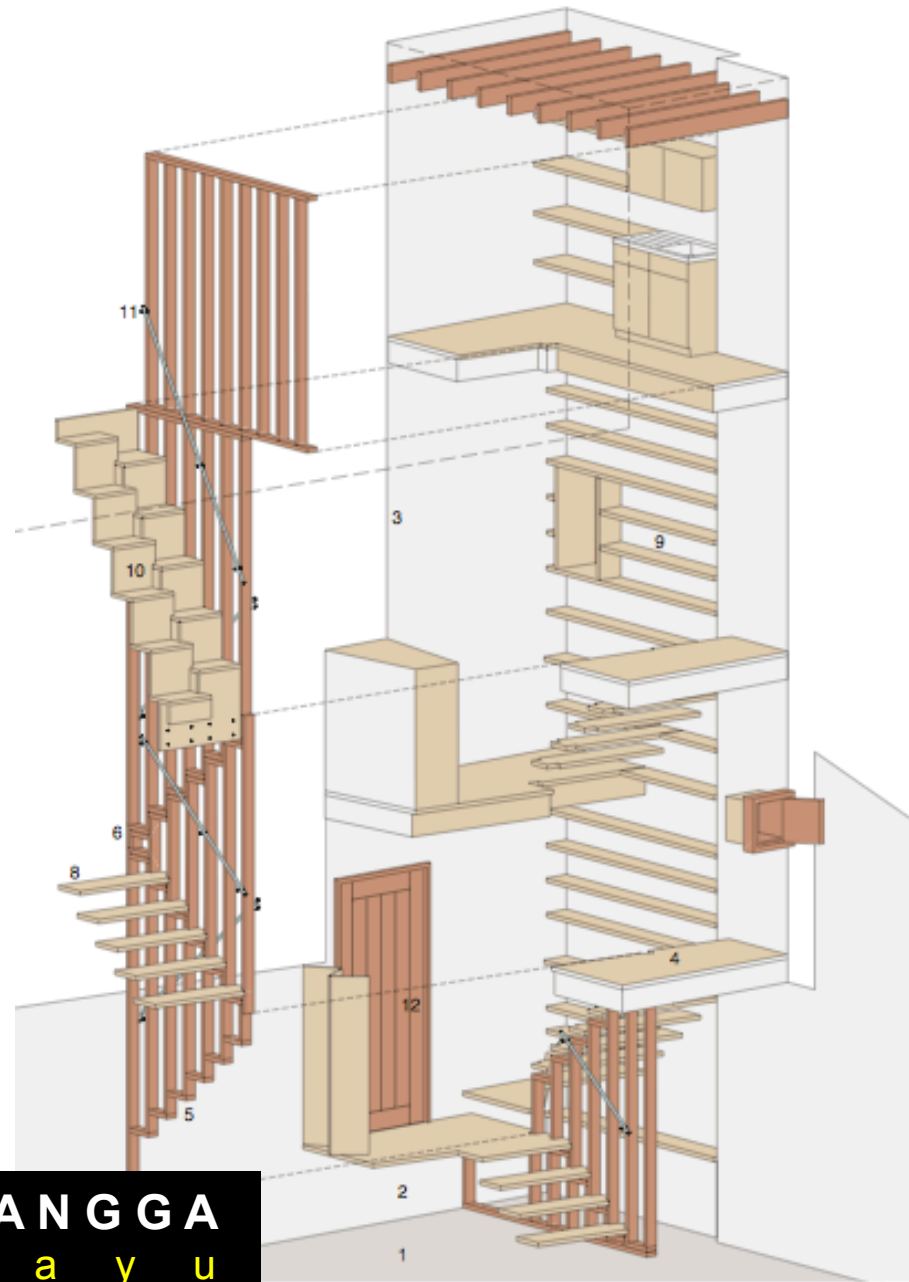


TANGGA
 K a y u

DETAIL V



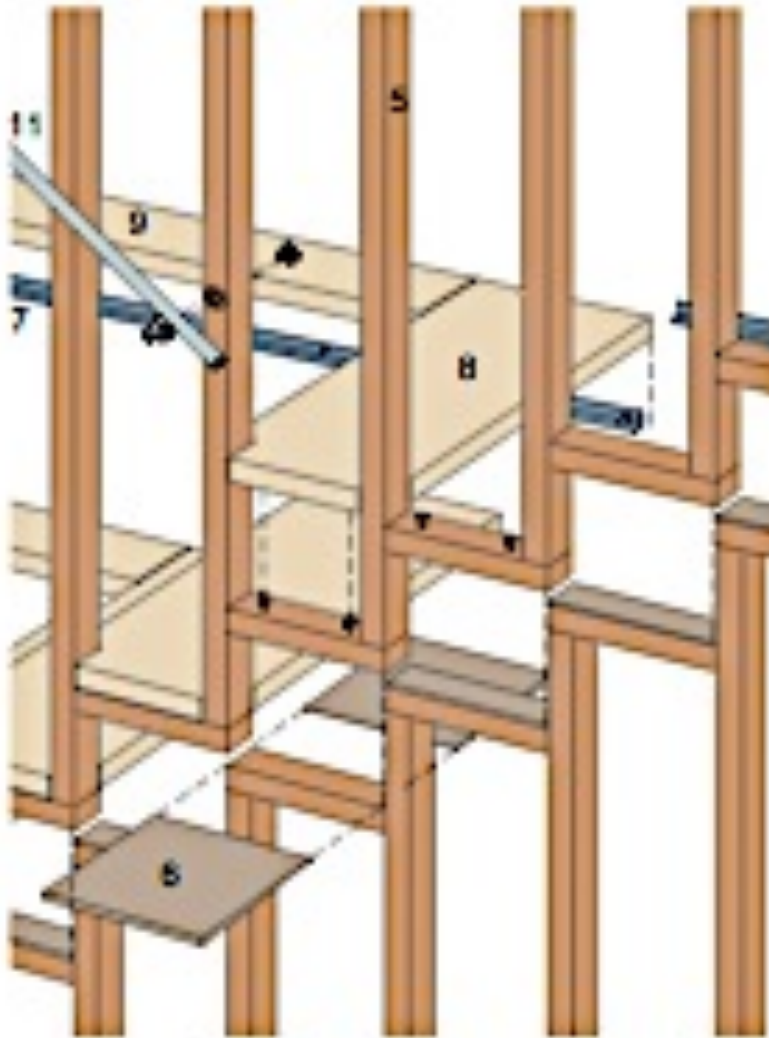
TANGGA
K a y u



TANGGA
K a y u



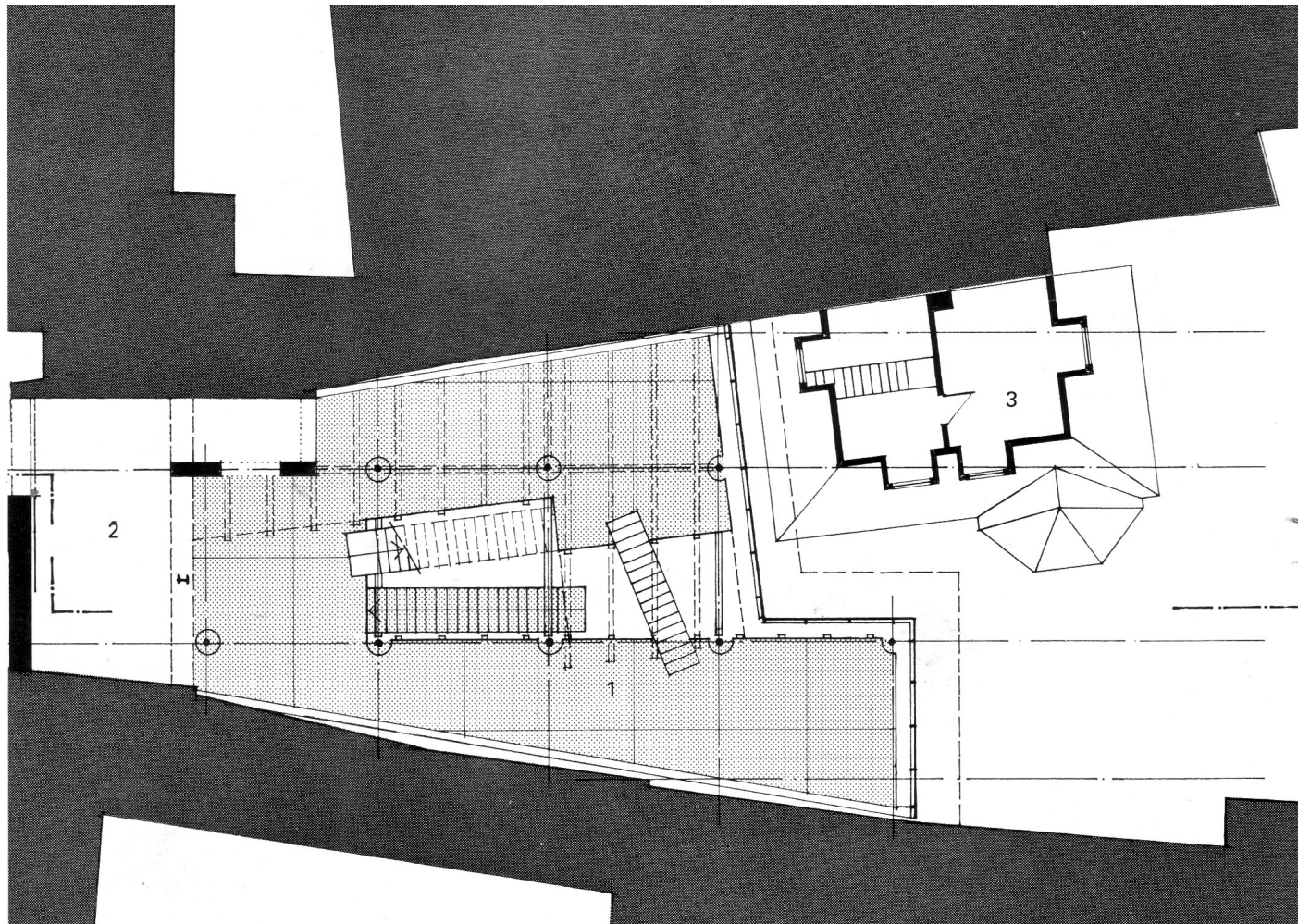
Foto: Jurnal, Nuzul, & Summar



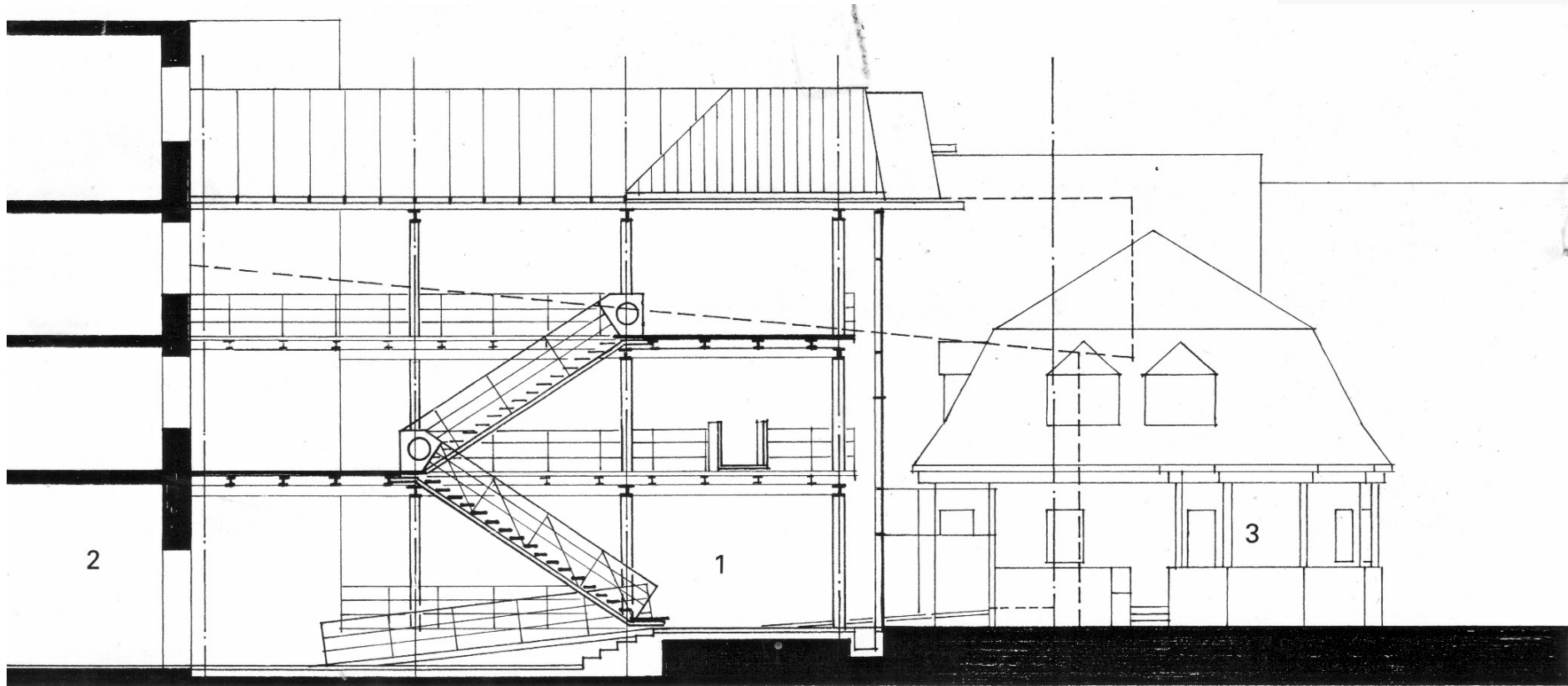
Alternate tread stair

2485 x 1530 x 800 mm wide prefabricated staircase made up from biscuited and glued 36mm birch faced plywood pieces. Lowest riser of stair extends down to form 2nd floor landing edge and bears on 100 x 100 x 8 mm mild steel angle bolted to landing trimmer joists via timber batten secret-fixed into rear of riser.

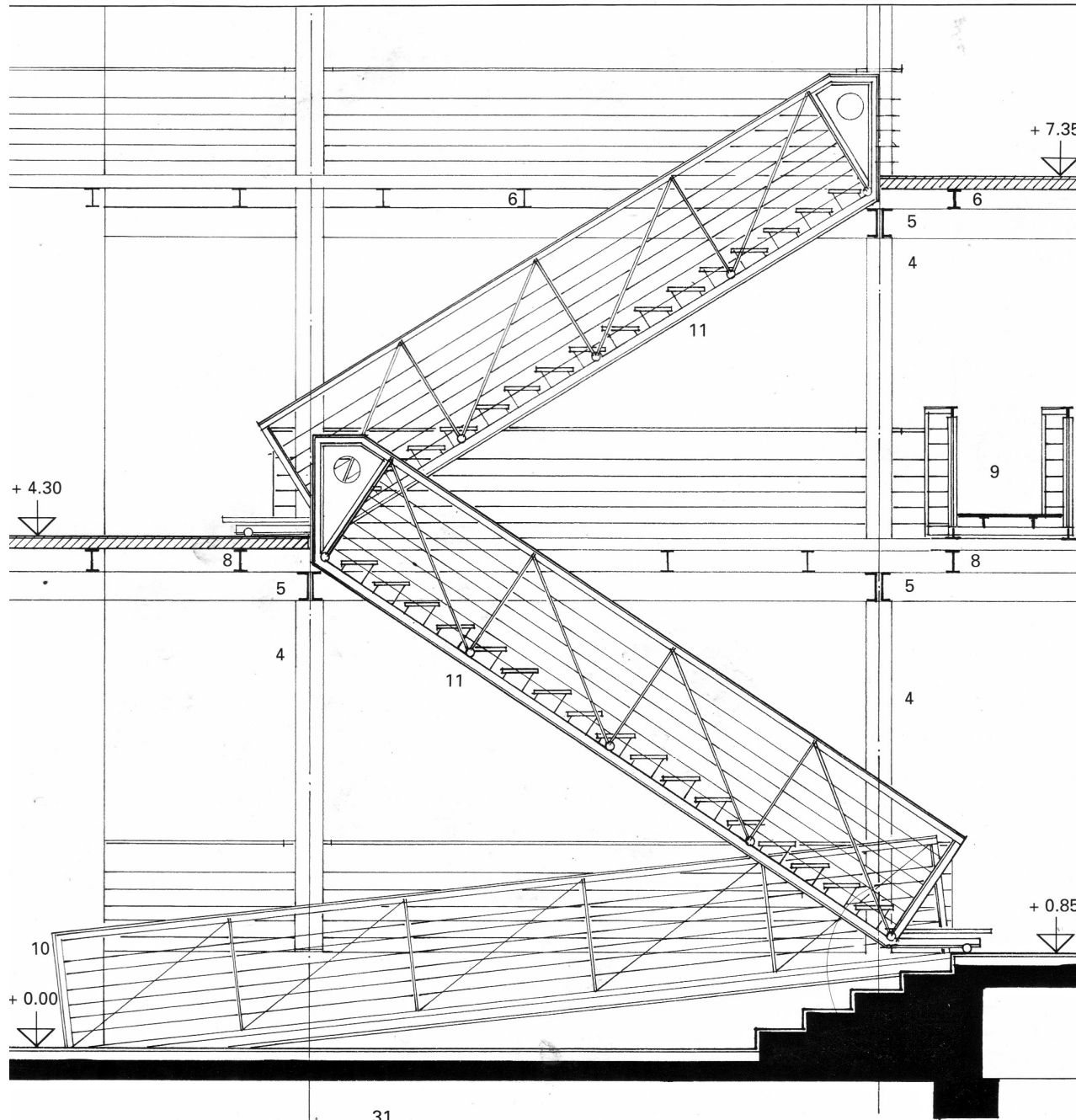
Top riser extends up to form 3rd floor landing edge and bears on landing trimmer joists via 25 x 40 mm mild steel angle secret-fixed into rear of riser.



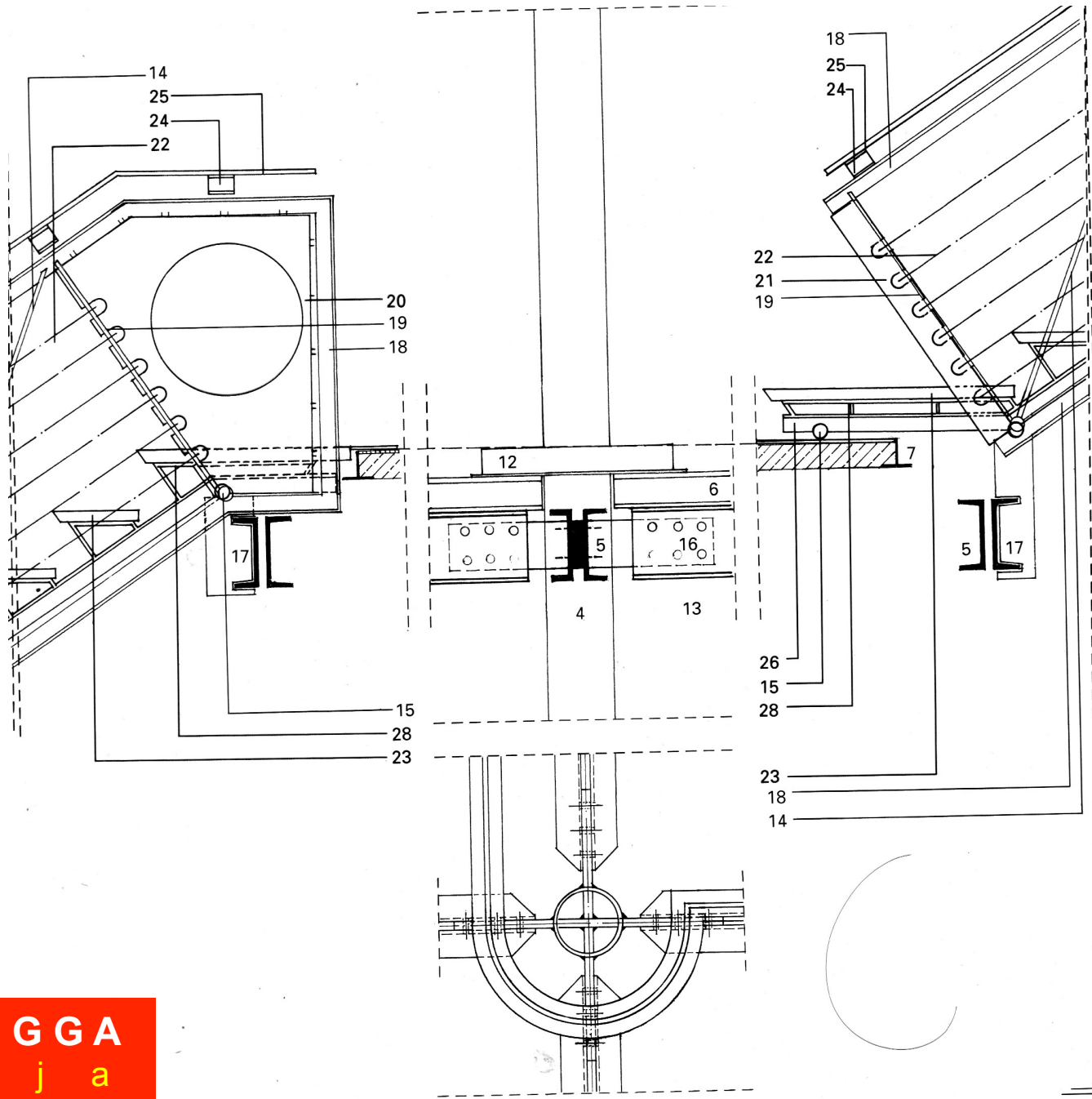
TANGGA
B a j a



TANGGA
B a j a



TANGGA
B a j a



TANGGA
B a j a

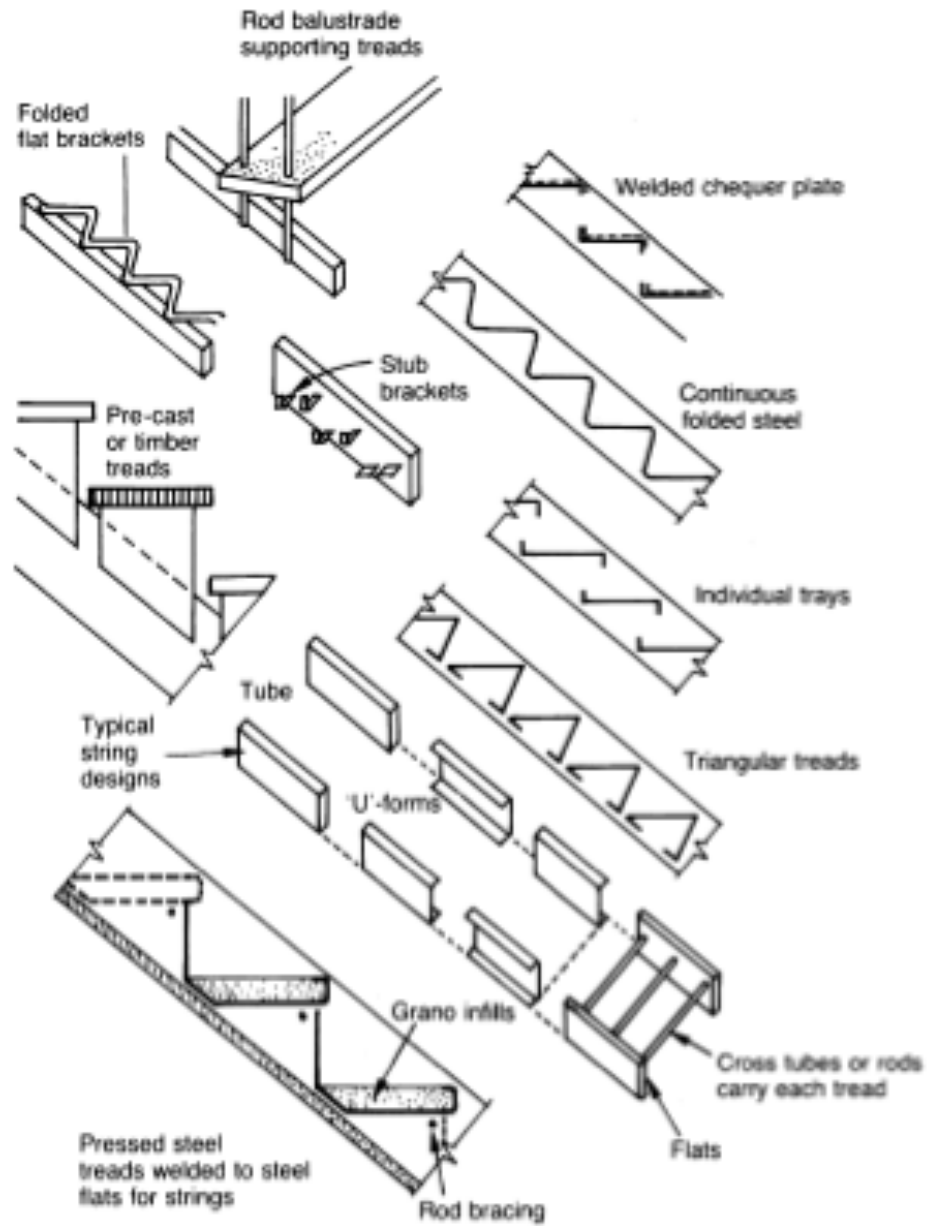


Figure 7.3b *Folded steel stairs: Profiles for folded sheet stairs or treads*

TANGGA
B a j a