

PERENCANAAN TEKNOLOGI & SISTEM BANGUNAN (PTSB) 03

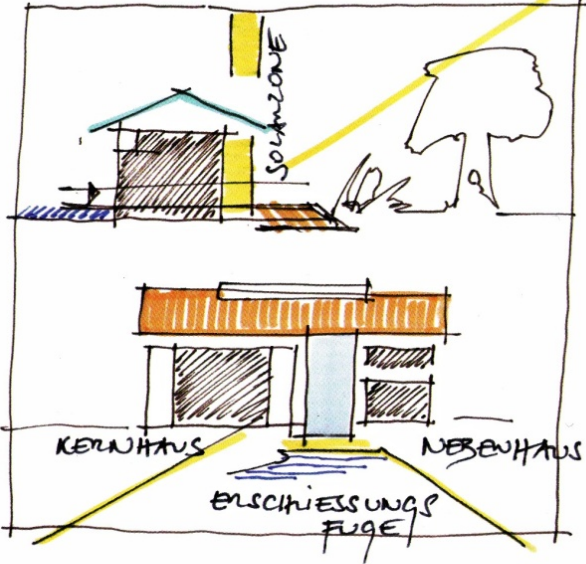
DRAWINGS

Drawings at design stage:

- [1] **Schematic drawing** – a preliminary design drawing, sketch or diagram showing in outline form the designer's general intention

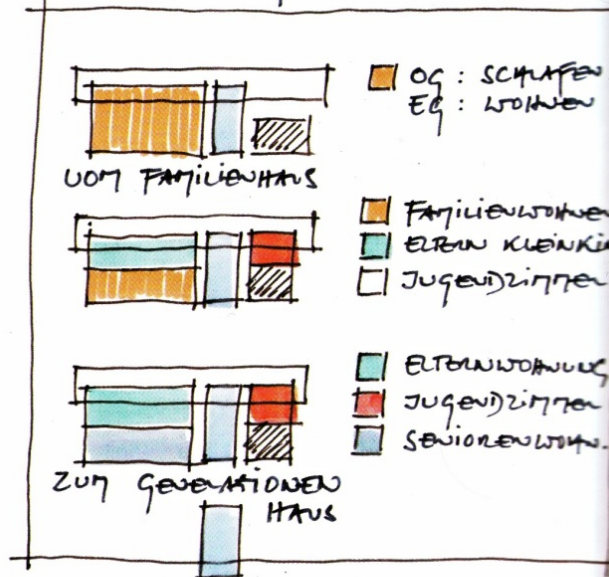
- [2] **Development drawing** – a design drawing developed to show the building and site as envisaged by the designer and from which production drawings can be produced

Zwei Häuser unter einem Dach



Zeichnung 1 Zwei Häuser unter einem Dach

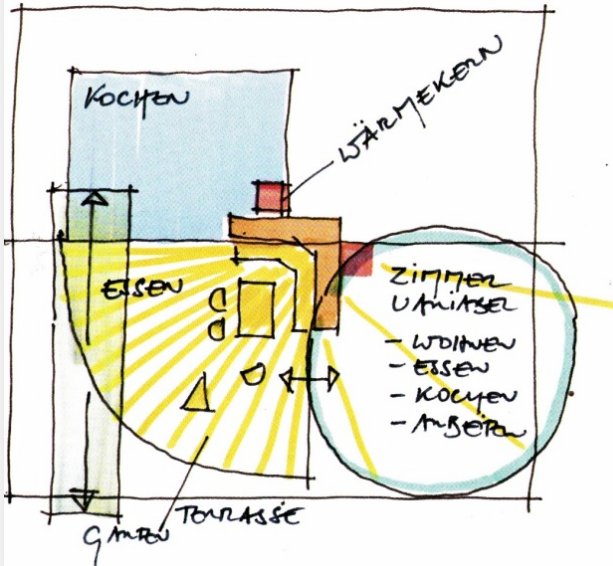
ENTWICKLUNGSHAUS



Zeichnung 2 Entwicklungshaus - vom Familien- zum Generationenhaus

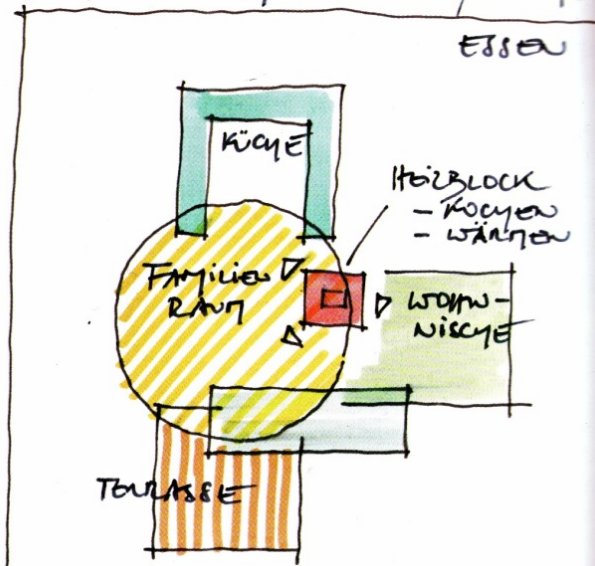
FAMILIENRAUM

3a



FAMILIENRAUM WOHNEN/KOCHEN

ESSEN



DRAWINGS

Drawings at production stage:

[1] **Location drawing**– a drawing produced in order the drawing users may :

- gain overall picture of the layout and shape of the building
- determine setting out dimensions for the building as a whole
- locate and identify the spaces and parts of the building → doors, drainage, rooms etc

DRAWINGS

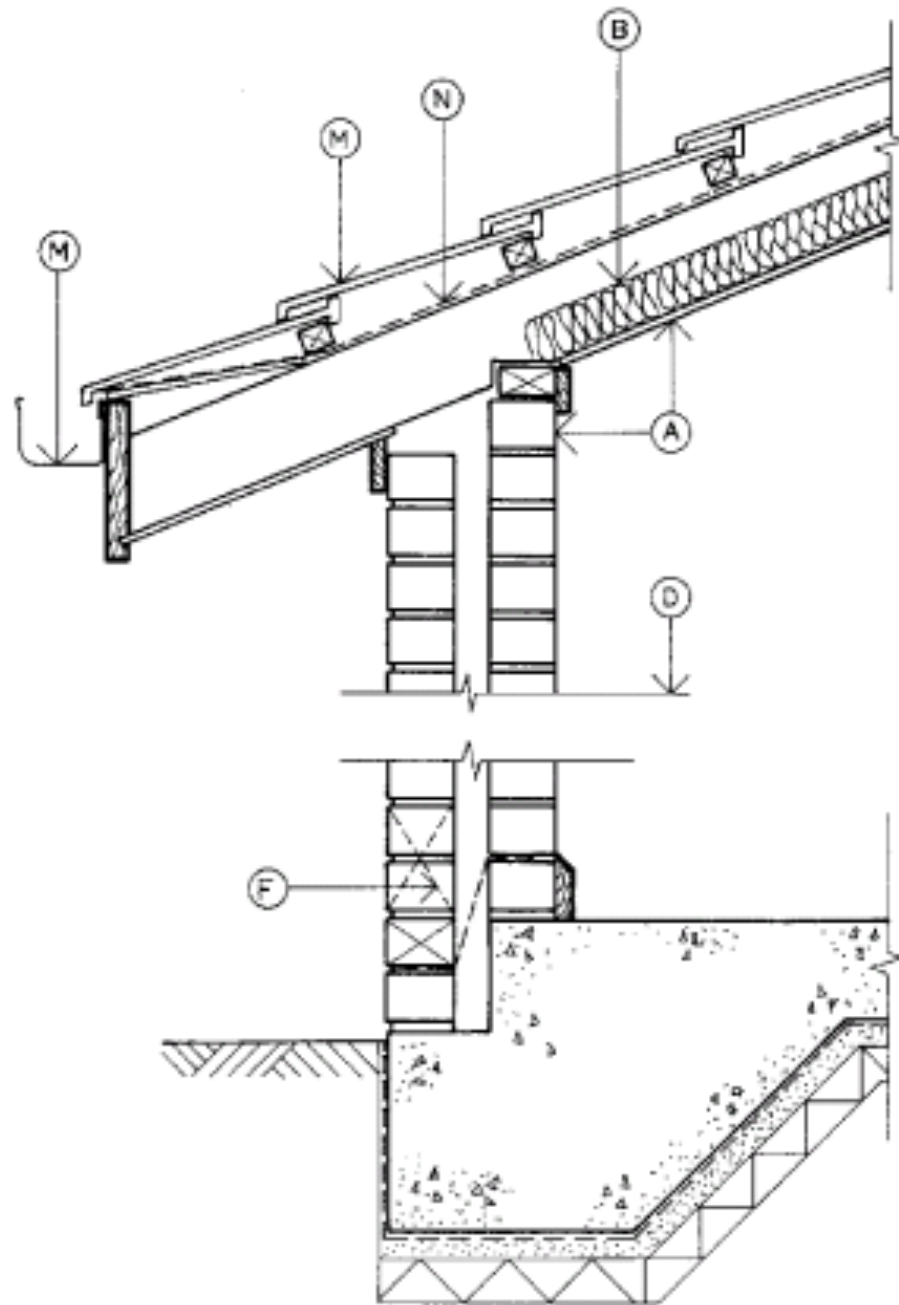
Drawings at production stage:

- [2] **Component drawing**– a drawing to show the information necessary for the manufacture and application of components → sizes and system or performance data

- [3] **Assembly drawing** - a drawing to show in detail the construction of buildings and junction in and between elements and/or components.

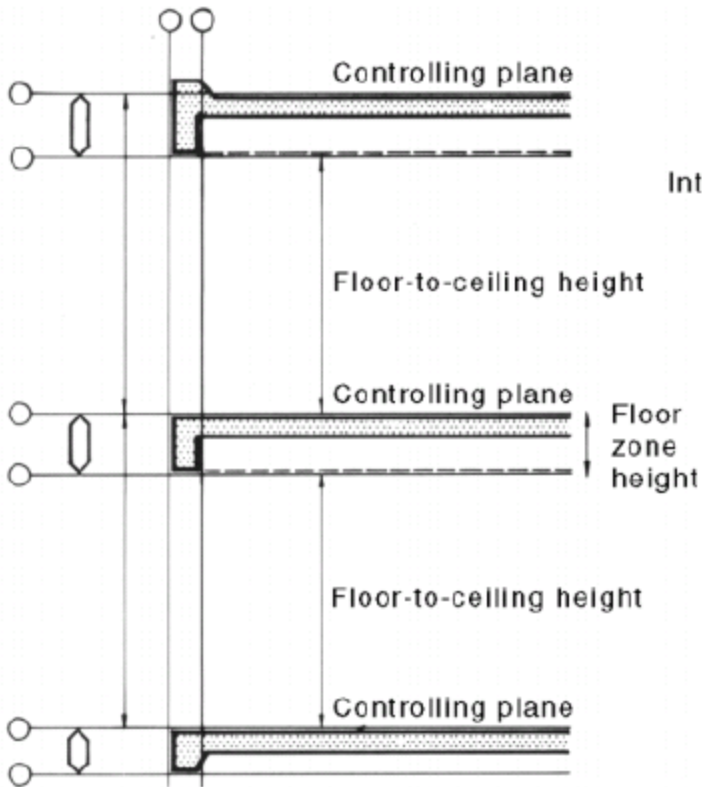
DRAWINGS

Detail – *an enlarged view of a portion of drawing*

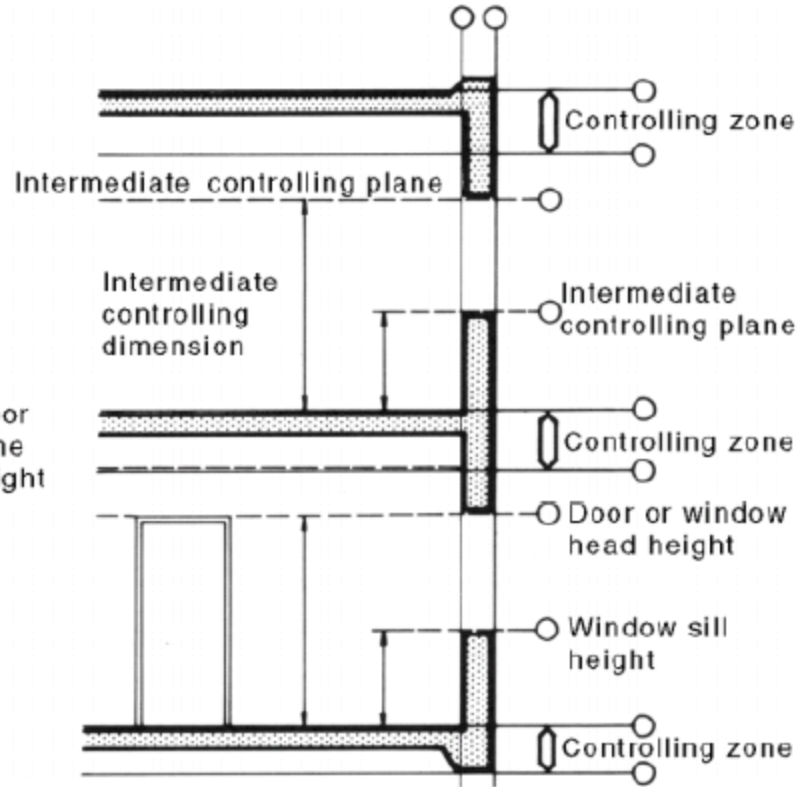


DRAWINGS

VERTICAL CONTROLLING DIMENSIONS

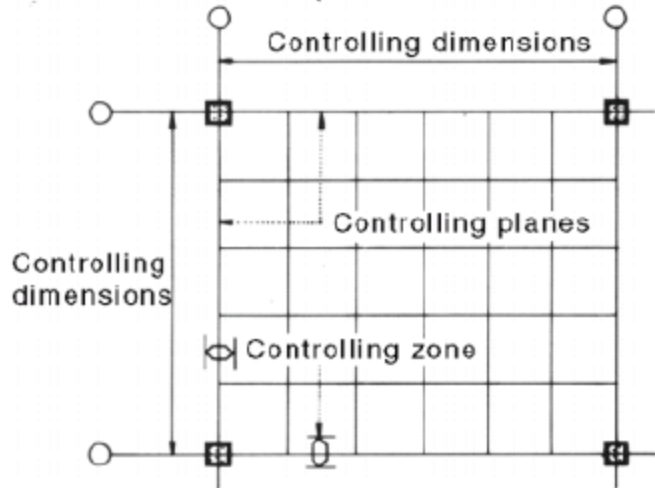


INTERMEDIATE CONTROLLING DIMENSIONS

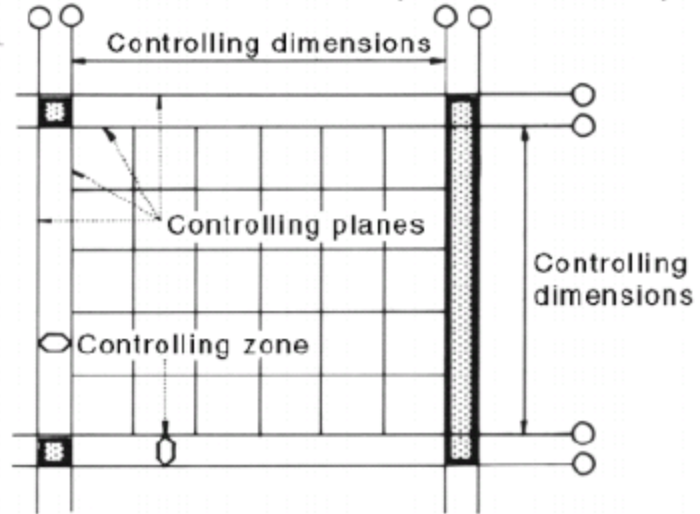


DRAWINGS

HORIZONTAL CONTROLLING DIMENSIONS
AXIAL PLANNING (CENTRE-LINE PLANNING)



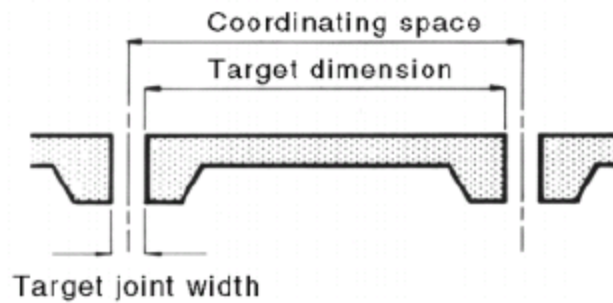
BOUNDARY PLANNING (FACE PLANNING)



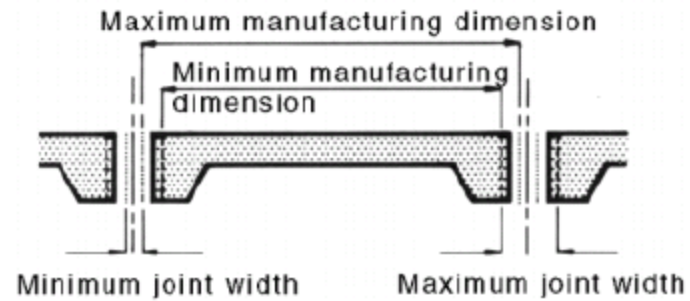
DRAWINGS

COMPONENT SIZE - JOINTS AND TOLERANCES

COORDINATING DIMENSIONS

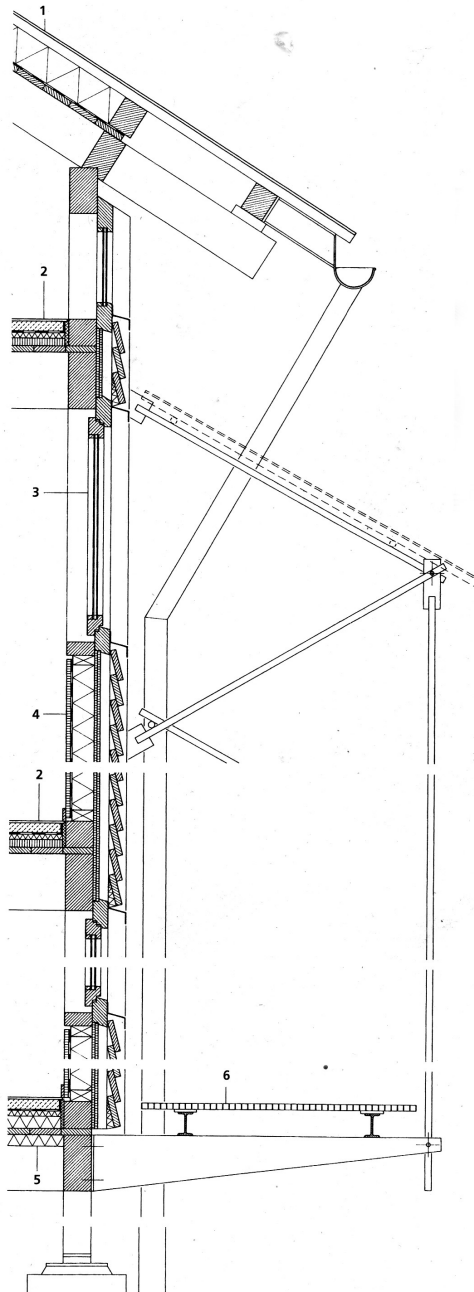


MANUFACTURING DIMENSIONS



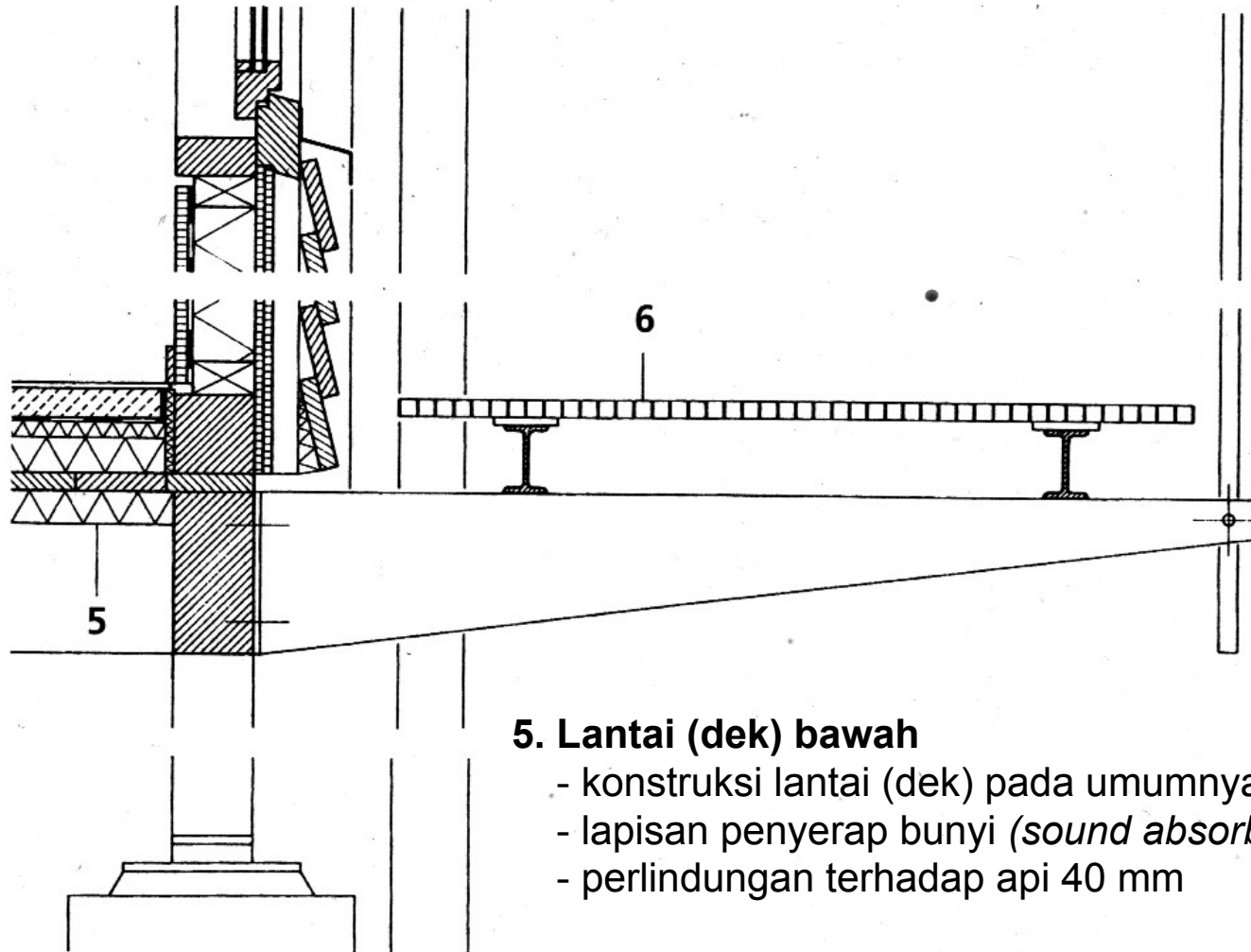
Vertikalschnitt durch eine Fassade.

- 1 Dach
 - Alu-Welle
 - Mineralwolle, 120 mm
 - Trennschicht aus Polyäthylen 0,4 mm
 - Holzdecke mit Nut und Feder, 25 mm
 - Pfetten, 120/180 mm
- 2 Reguläre Geschoßdecke
 - Synthesegummi, 3,2 mm
 - Zementestrich, 40 mm
 - Trennschicht aus Polyäthylen 0,2 mm
 - Trittschalldämmung, 25 mm
 - Spanplatte, 30 mm
 - Kies, 30 mm (unter den Wohnräumen)
 - Holzdecke mit Nut und Feder, 25 mm
- 3 Holzrahmen aus Fichtenholz mit Doppelverglasung
- 4 Fassade
 - Holzrahmenkonstruktion aus Fichte, im Innenraum sichtbar
 - Gipsbauplatte 12 mm auf Holzpfosten 40/107 mm
 - Dampfsperre
 - Mineralwolle, 120 mm
 - bituminierte Holzwolleplatte, 2 x 13 mm
 - Verkleidung mit überlappenden Elementen aus sägerauhem Fichtenholz, 24 mm
 - Lattung, 40/60 mm
- 5 Untere Geschoßdecke
 - wie reguläre Geschoßdecke
 - zusätzliche Schalldämmung
 - Brandschutzverkleidung, 40 mm
- 6 Gitter aus feuerverzinktem Stahl



Studentenwohnheim in Konstanz, Deutschland

Schaudt Architekten



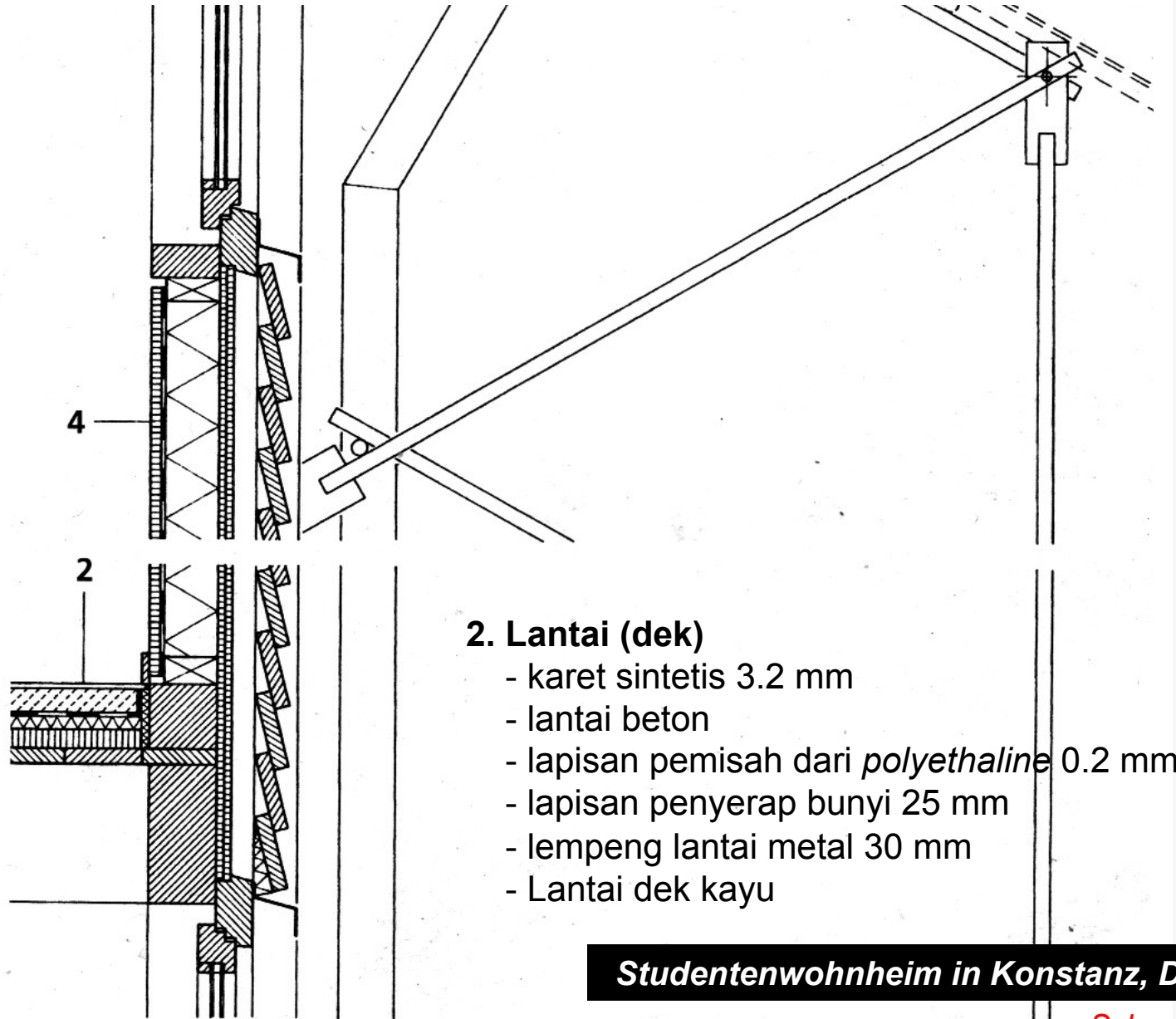
5. Lantai (dek) bawah

- konstruksi lantai (dek) pada umumnya
- lapisan penyerap bunyi (*sound absorber*)
- perlindungan terhadap api 40 mm

6. Grill baja

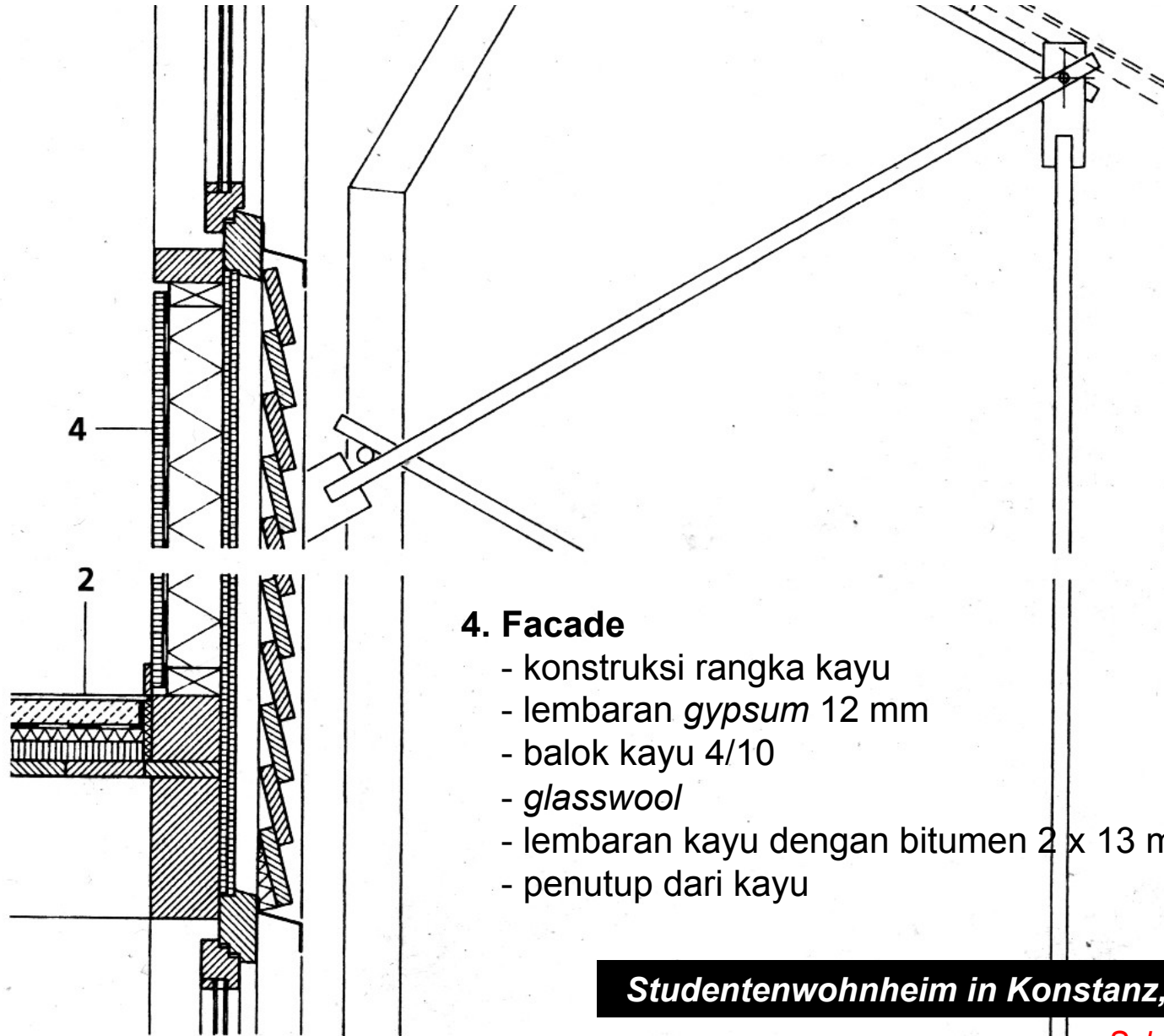
Studentenwohnheim in Konstanz, Deutschland

Schaudt Architekten



Studentenwohnheim in Konstanz, Deutschland

Schaudt Architekten

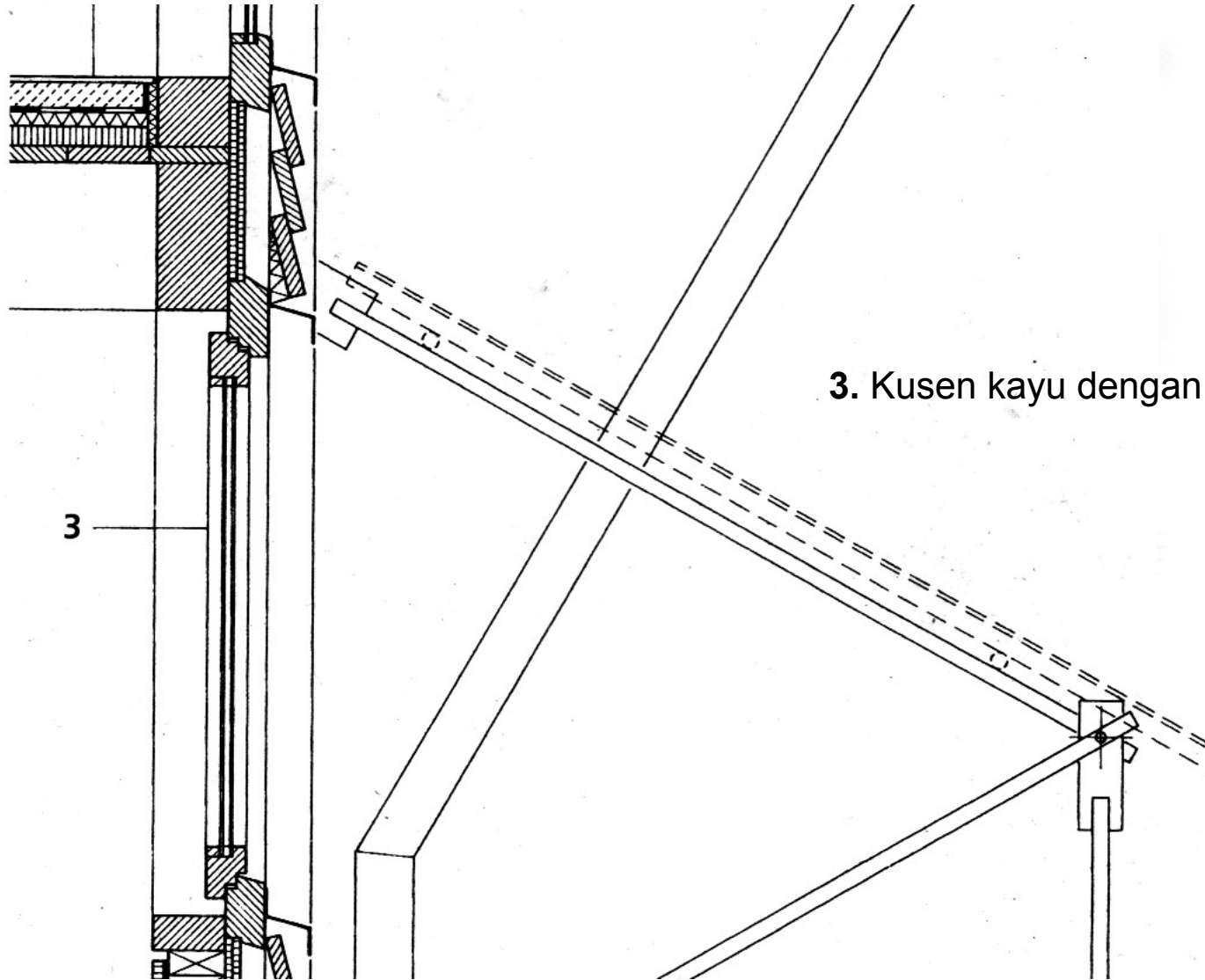


4. Facade

- konstruksi rangka kayu
- lembaran *gypsum* 12 mm
- balok kayu 4/10
- *glasswool*
- lembaran kayu dengan bitumen 2 x 13 mm
- penutup dari kayu

Studentenwohnheim in Konstanz, Deutschland

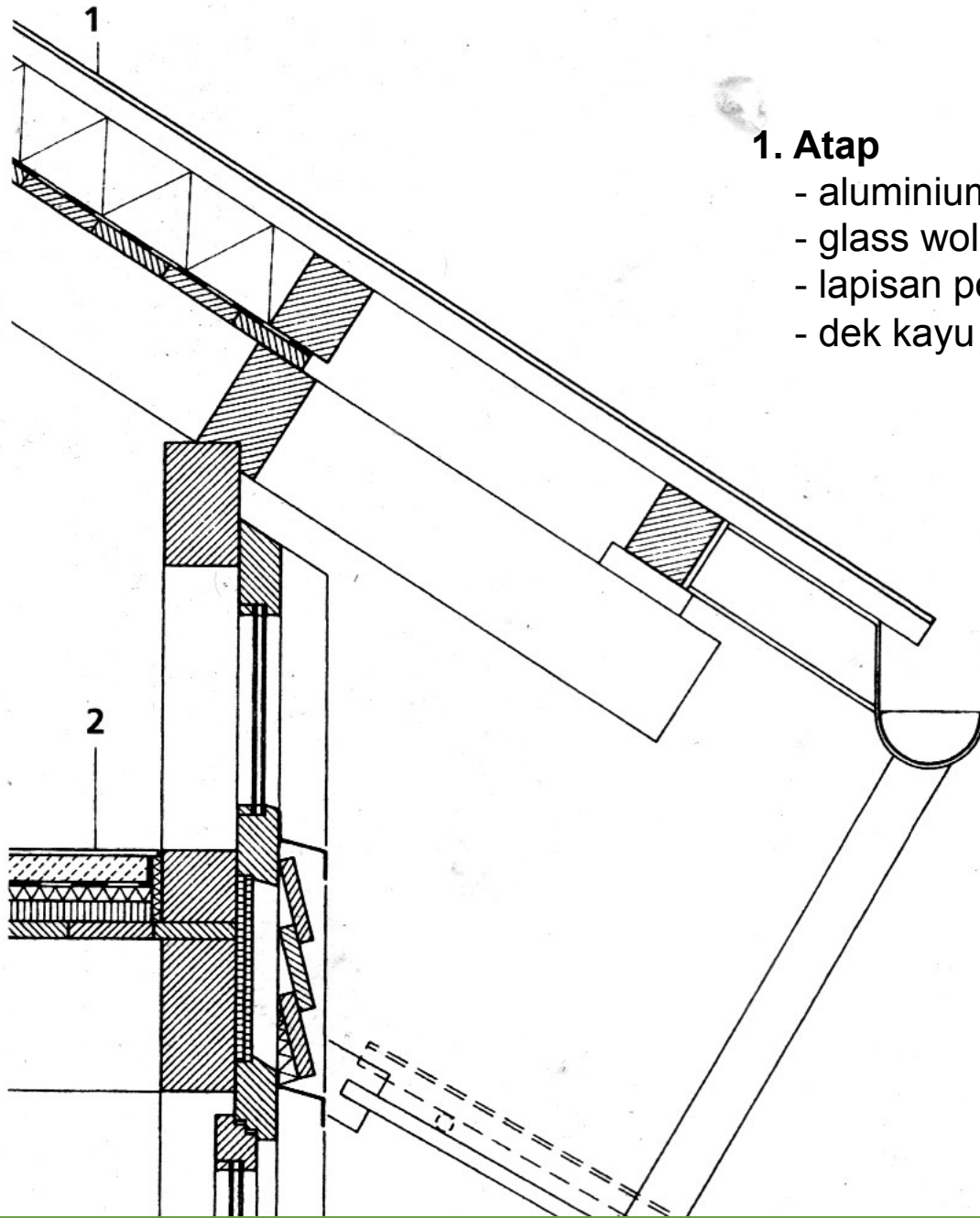
Schaudt Architekten



3. Kusen kayu dengan kaca 2 lapis

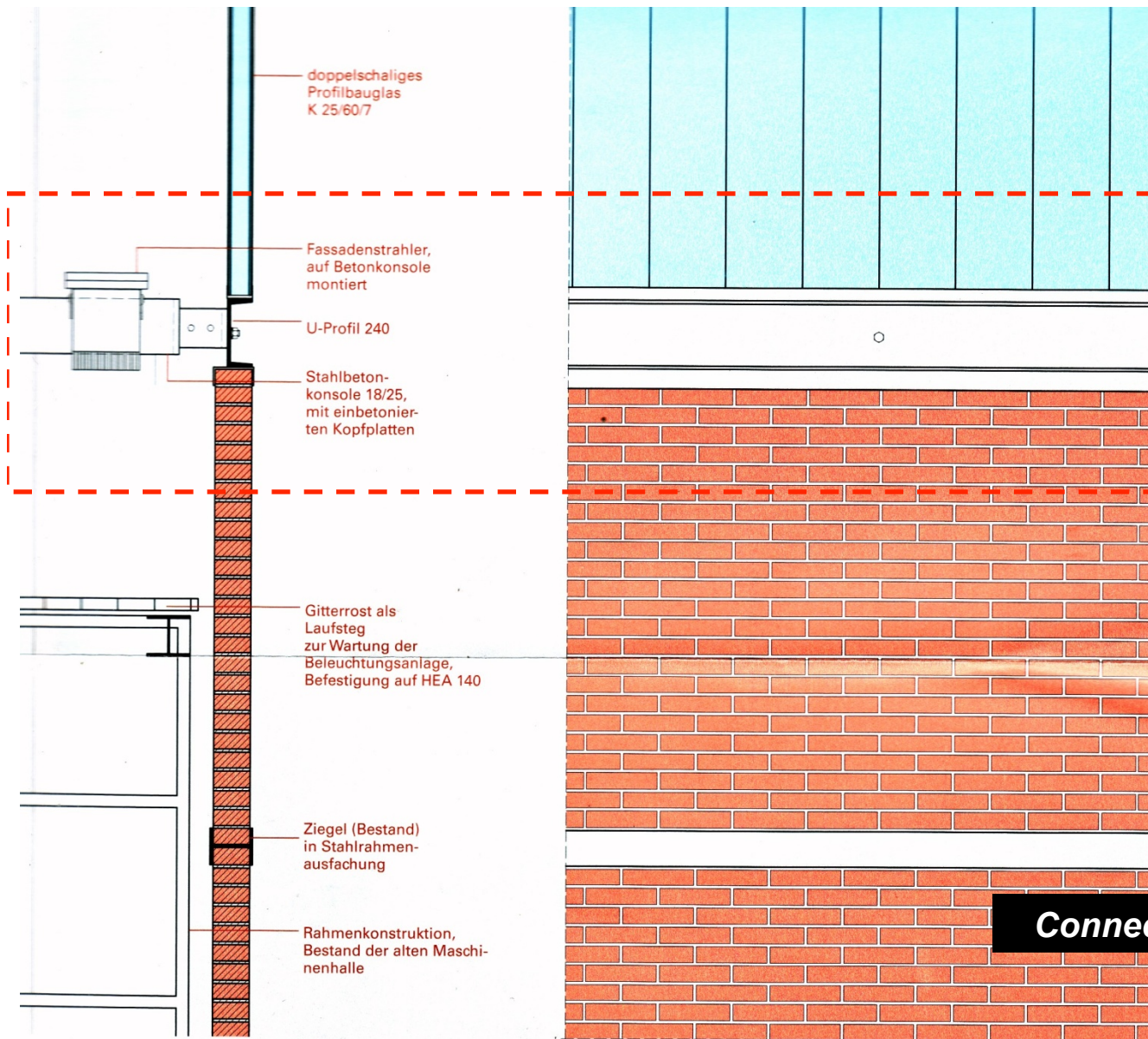
Studentenwohnheim in Konstanz, Deutschland

Schaudt Architekten



1. Atap

- aluminiumfoil
- glass woll 120 mm
- lapisan pemisah dari *polyethaline* 0.2 mm
- dek kayu



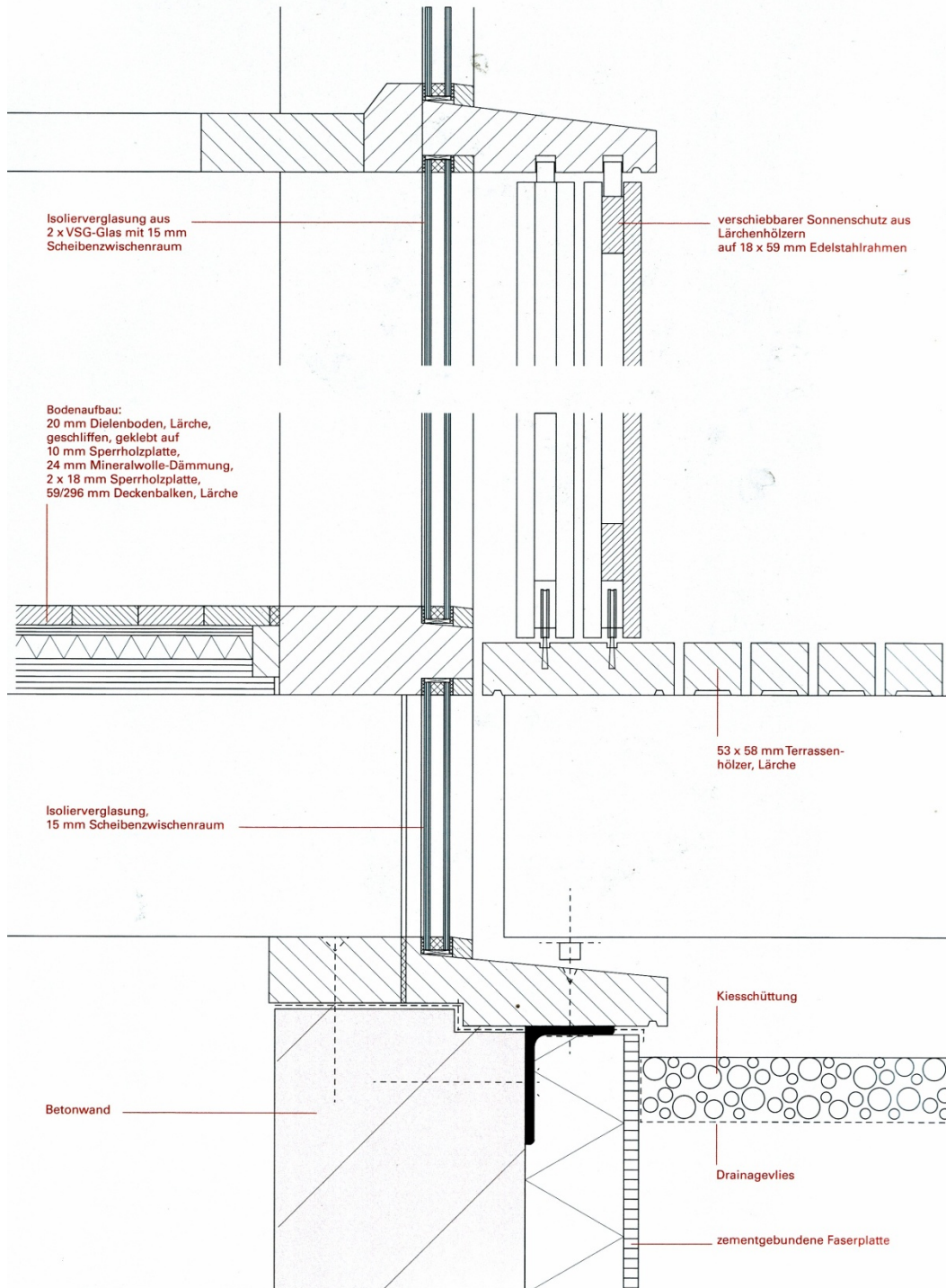
Lichtkrone Ansicht, M 1:20



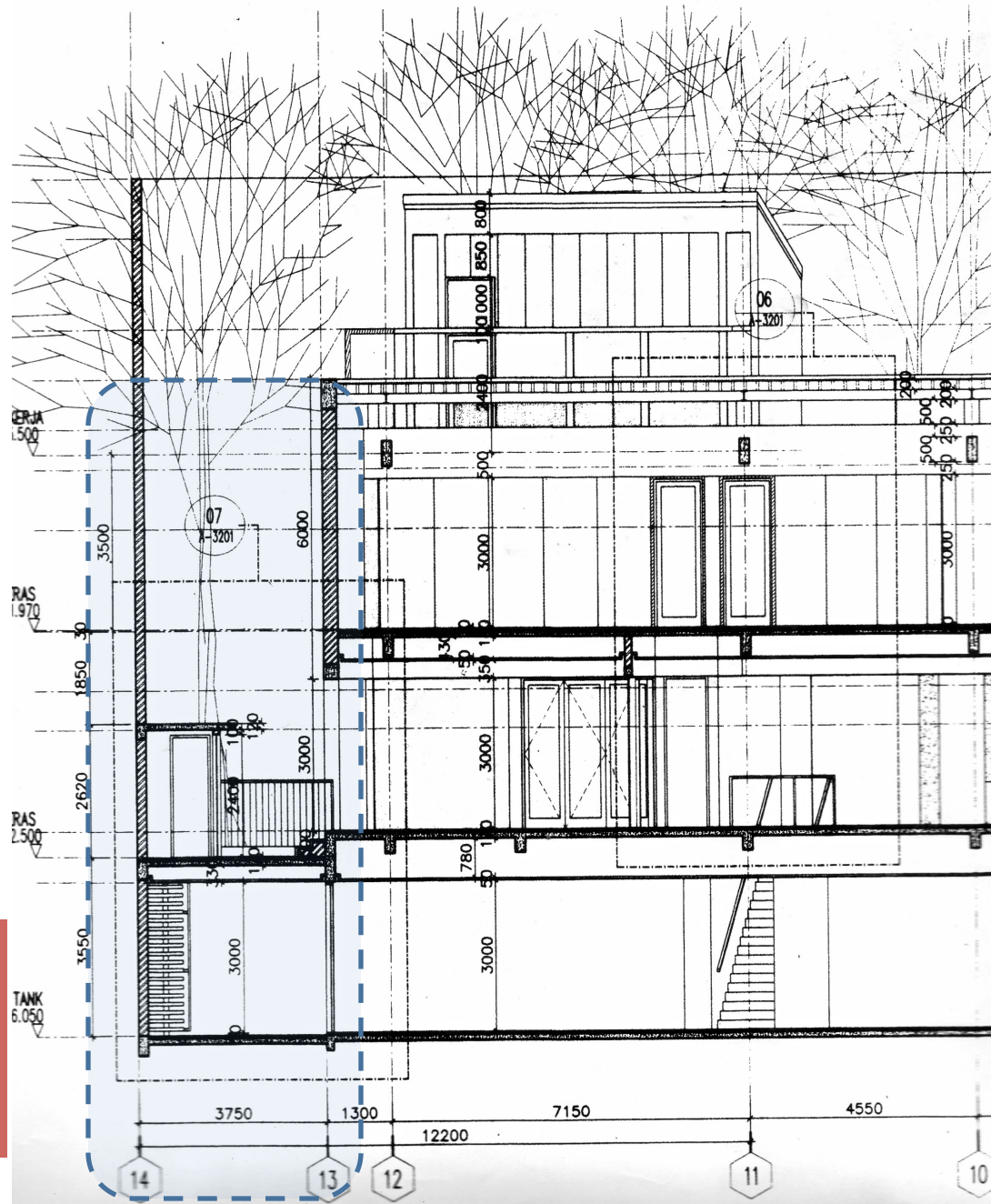
Connection between steel & brick



Wohnhauses in Soest, Netherland



Wohnhauses in Soest, Netherland



Exclusive Document!

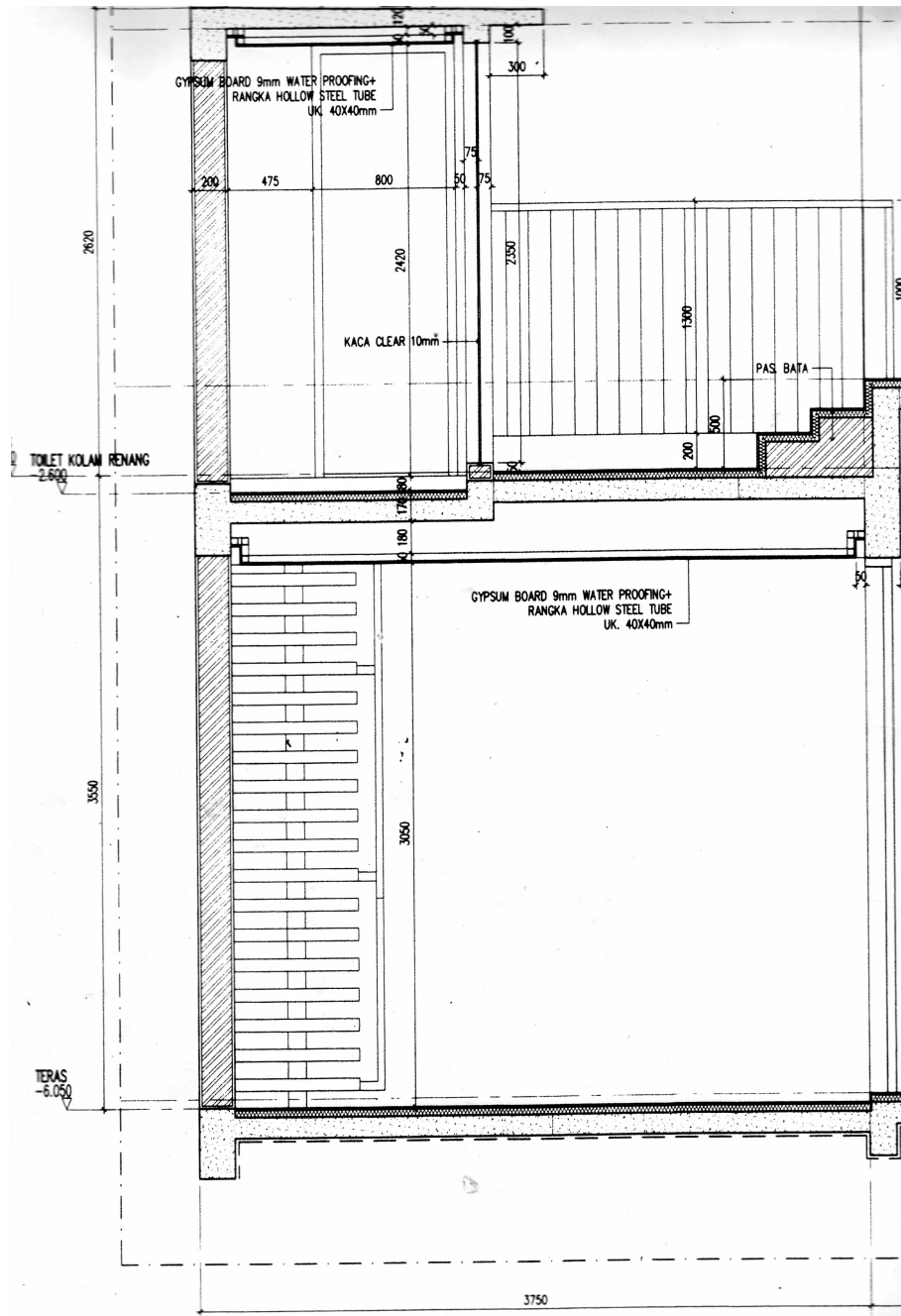
Rumah Tinggal

Jl. Sinabung Semarang

Arsitek:

Ir. Sarjono Sani, M.Arch

Exclusive Document!
Rumah Tinggal
Jl. Sinabung Semarang
Arsitek:
Ir. Sarjono Sani, M.Arch



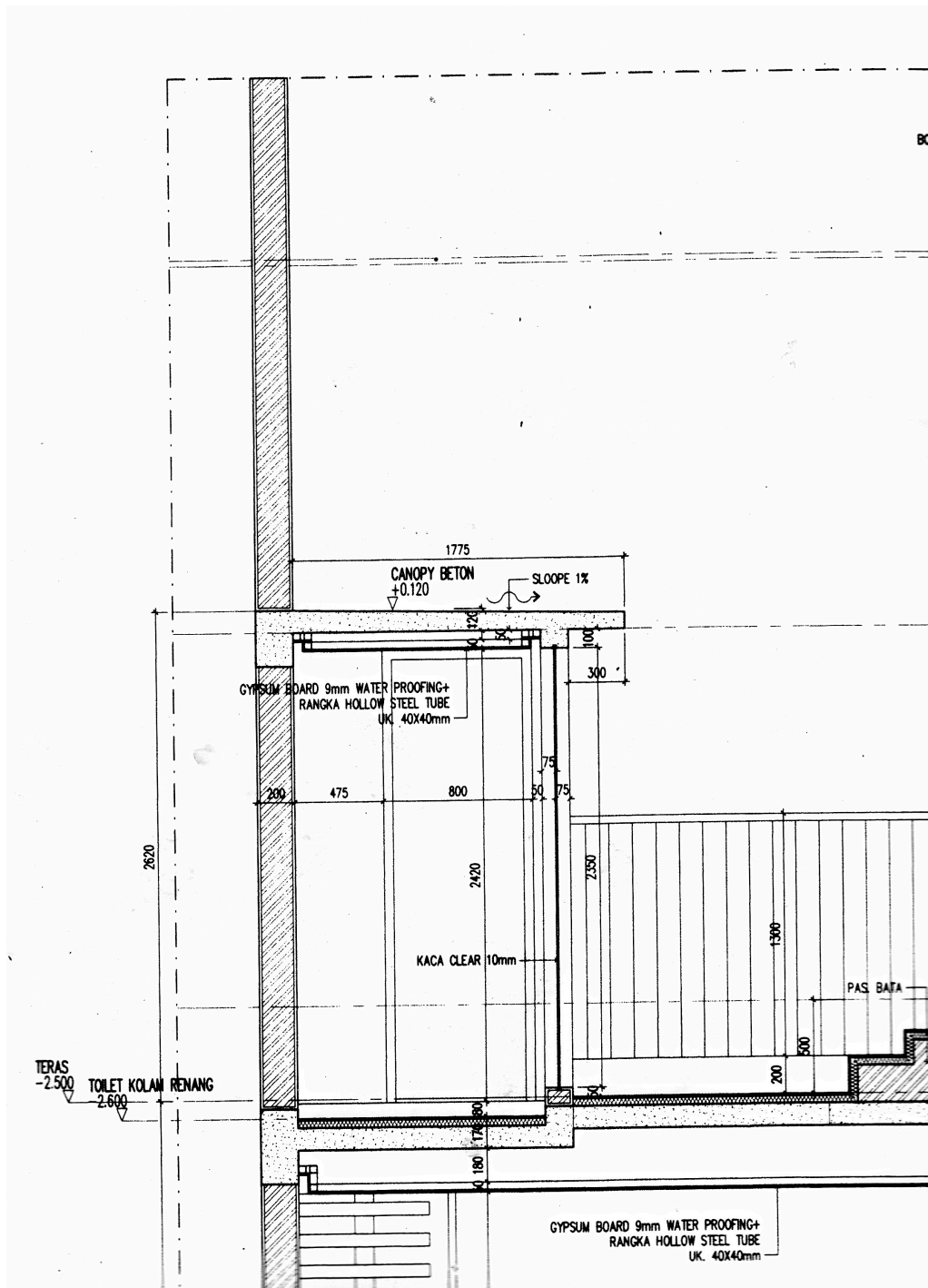
Exclusive Document!

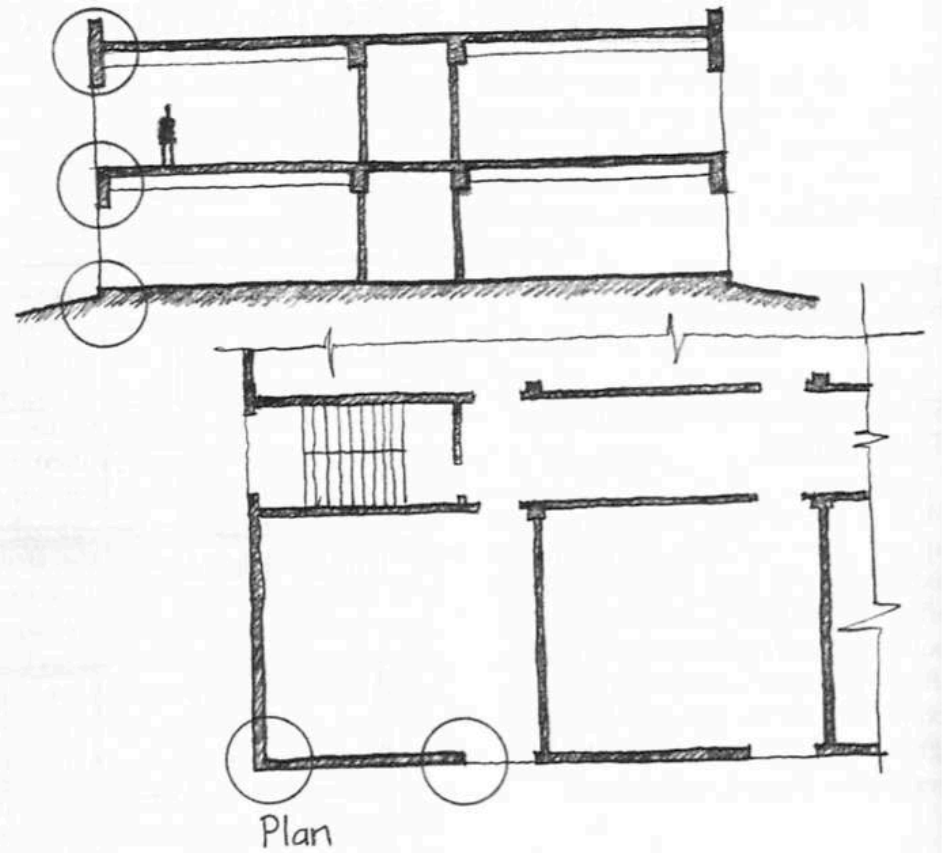
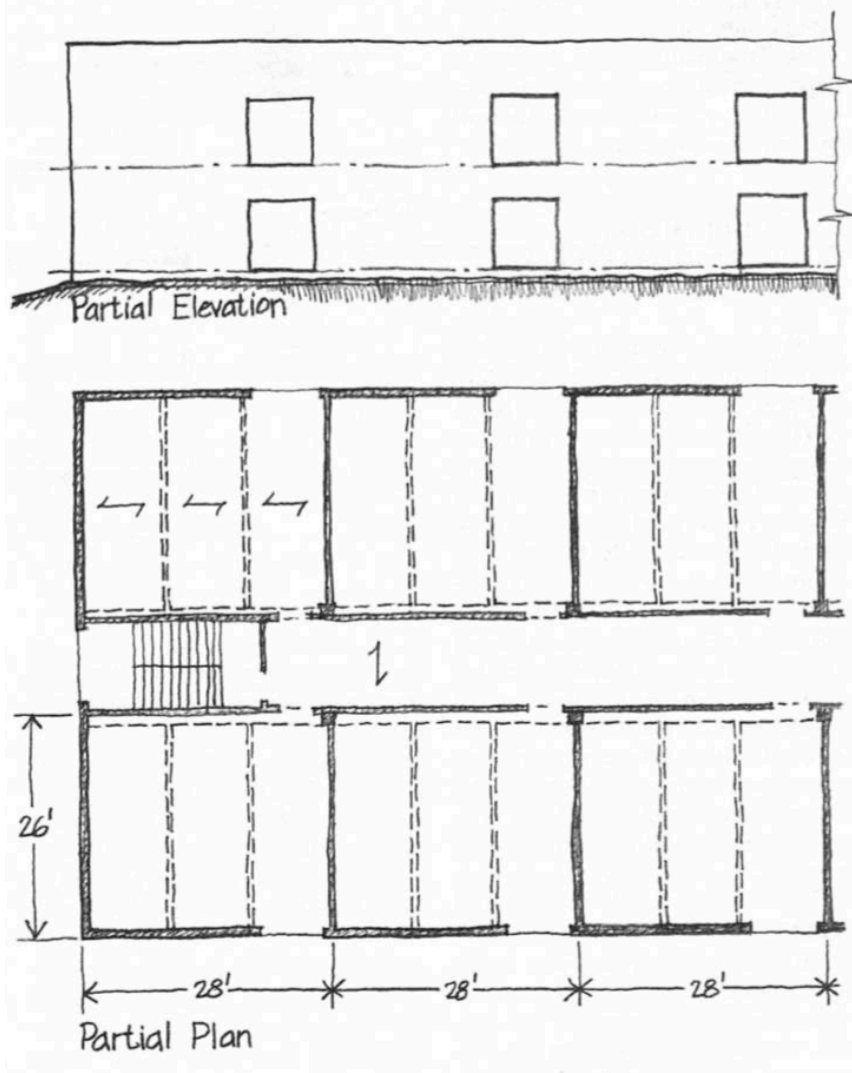
Rumah Tinggal

Jl. Sinabung Semarang

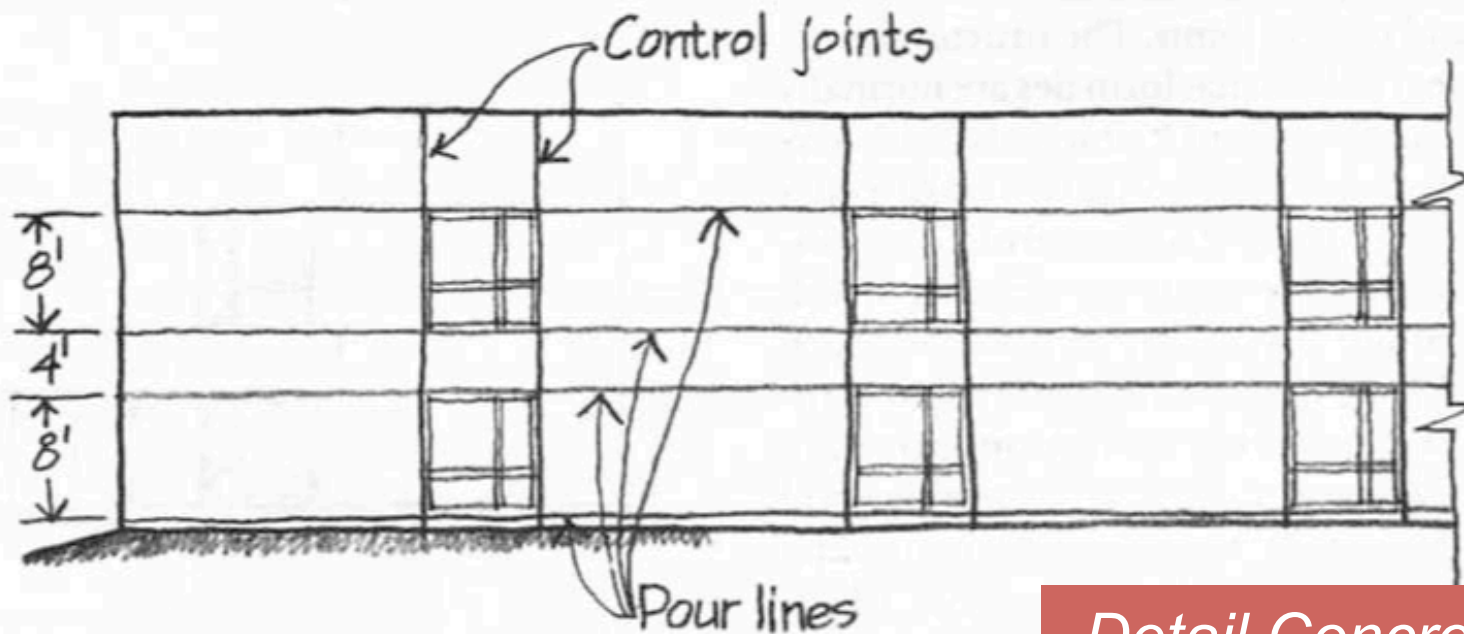
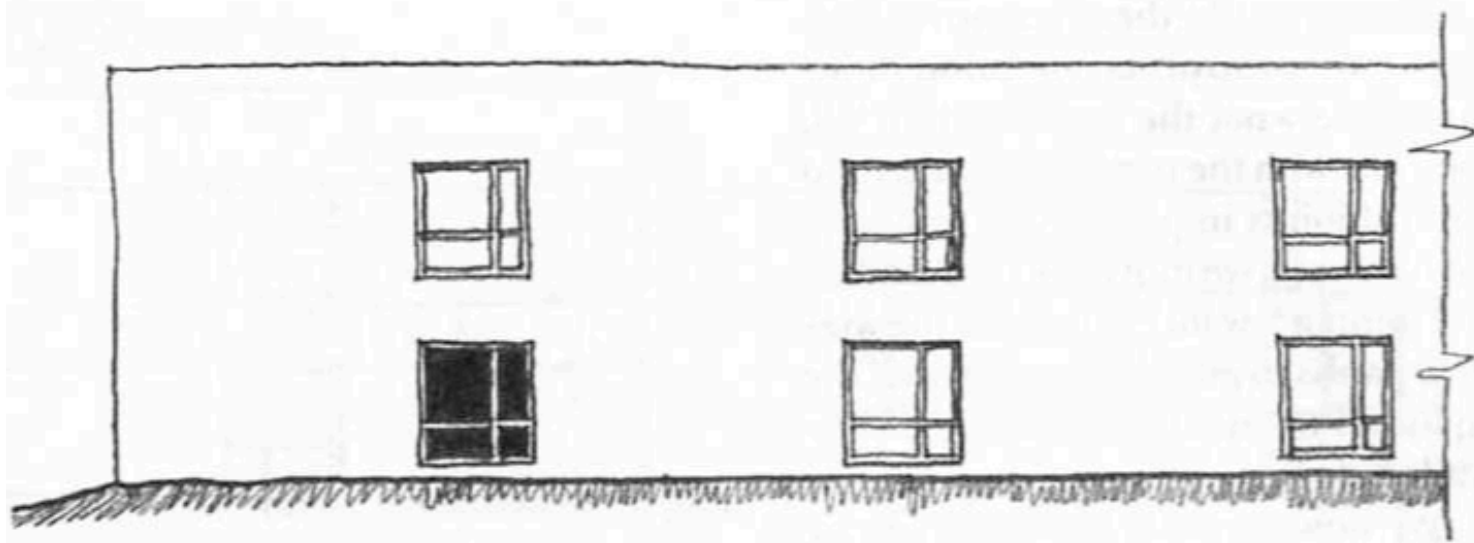
Arsitek:

Ir. Sarjono Sani, M.Arch

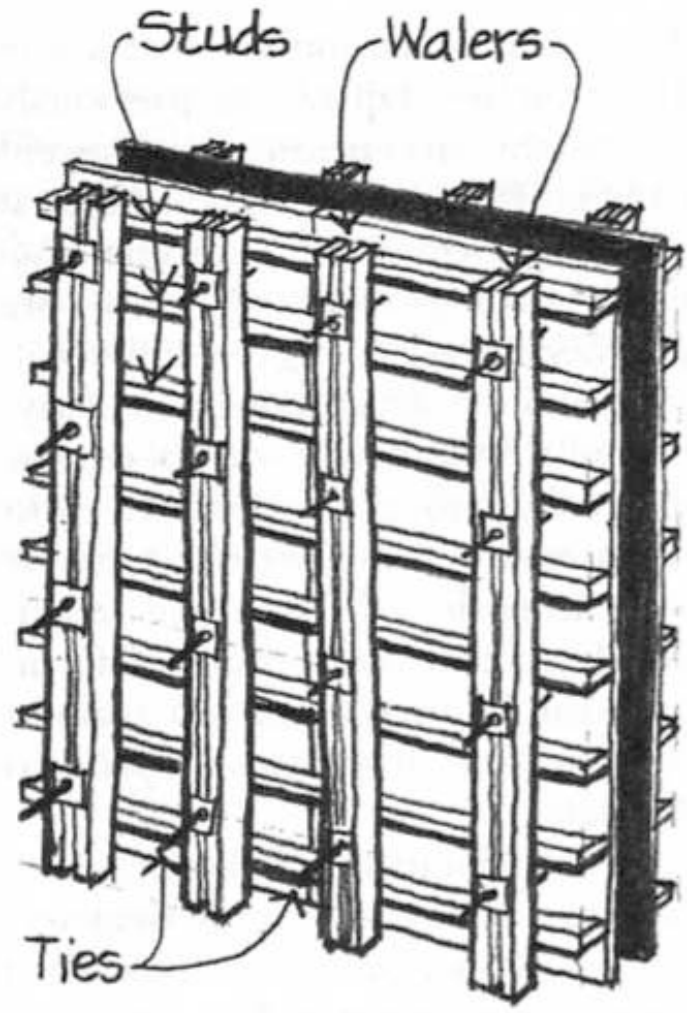
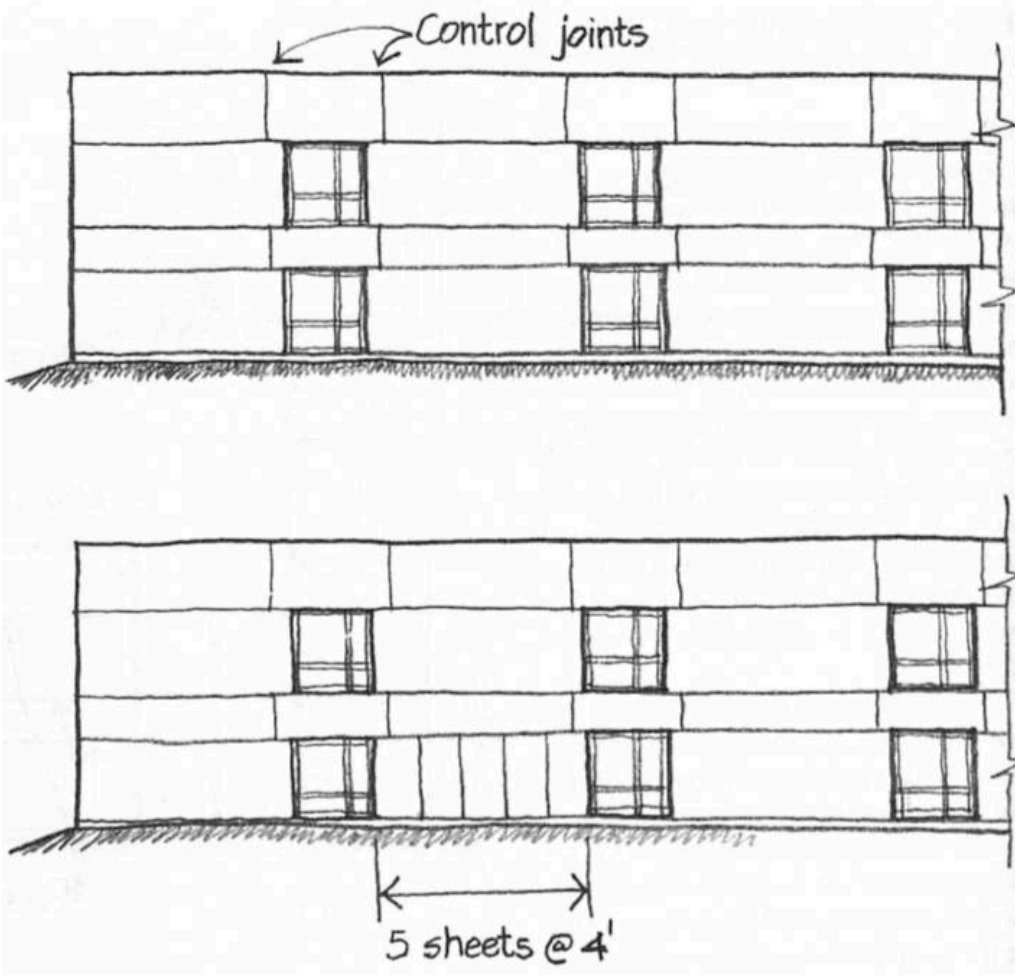




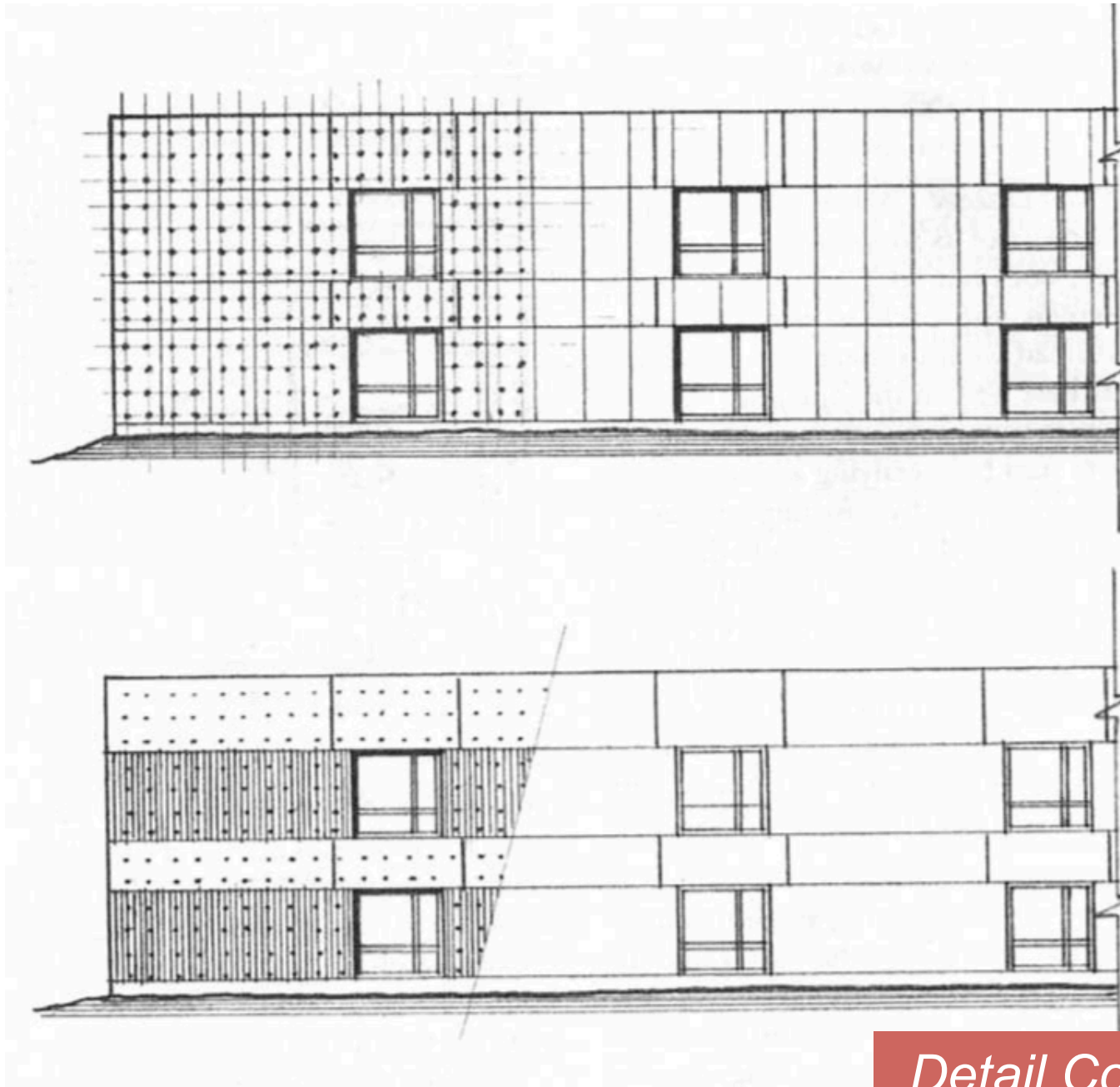
Detail Concrete Wall



Detail Concrete Wall

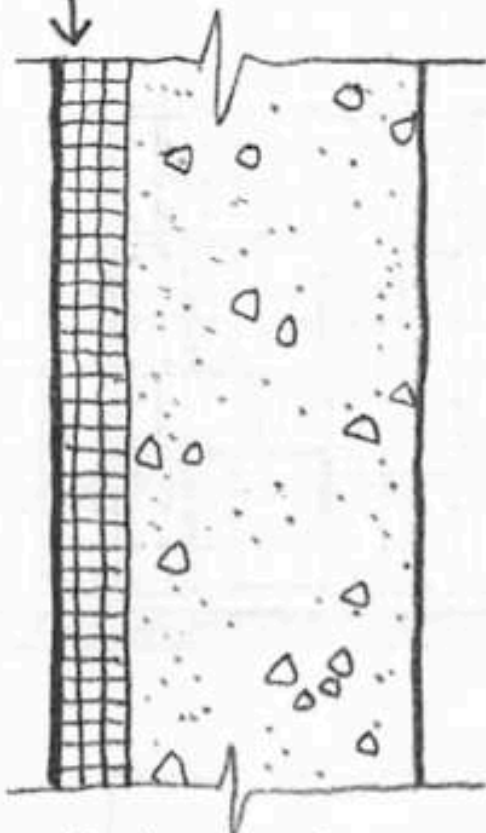


Detail Concrete Wall

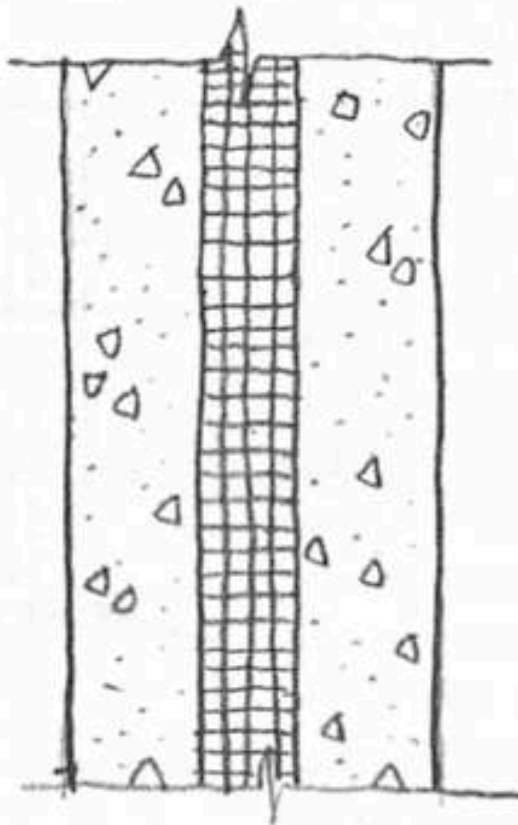


Detail Concrete Wall

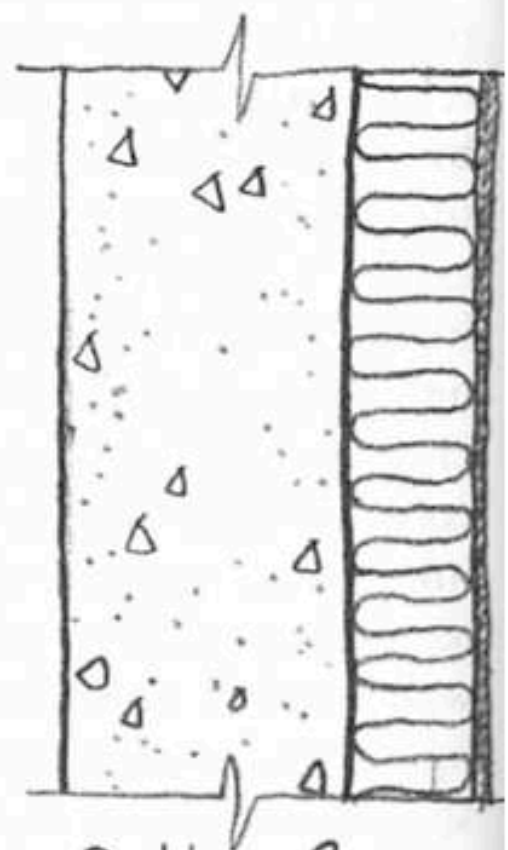
EIFS (Exterior Insulation & Finish System)



Option 1
EIFS Outside

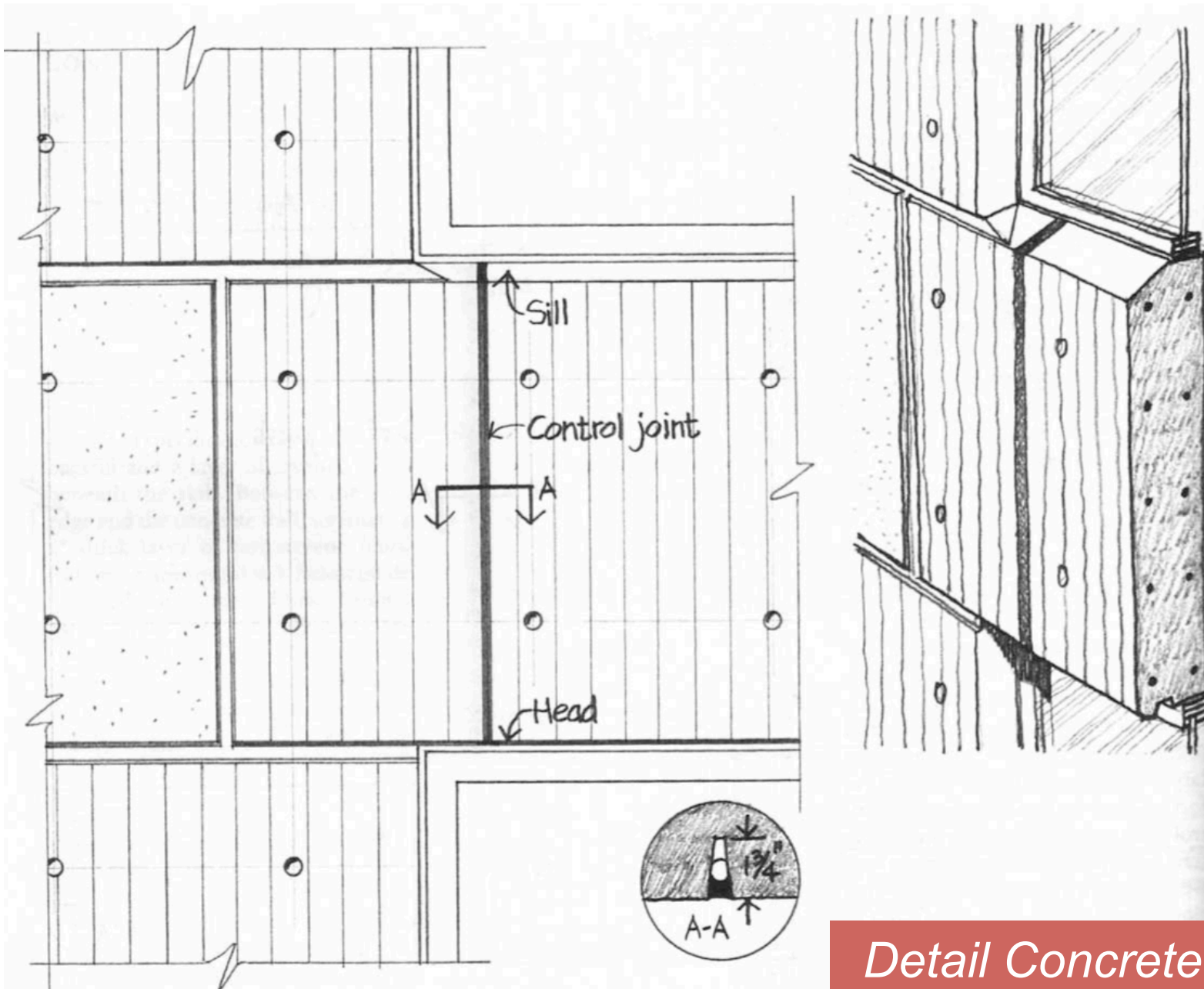


Option 2
Foam Insulation
In Form

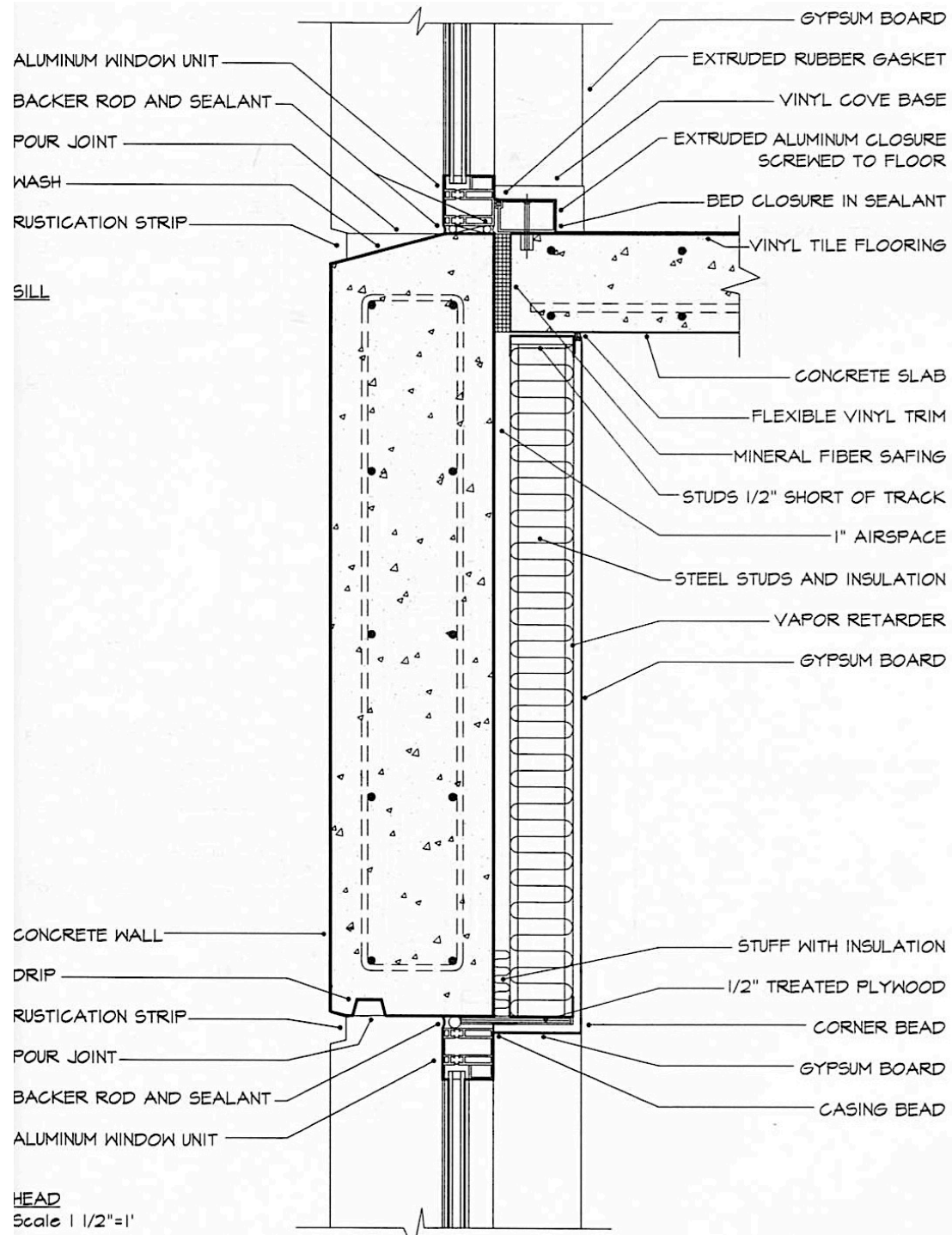


Option 3
Insulation
Inside

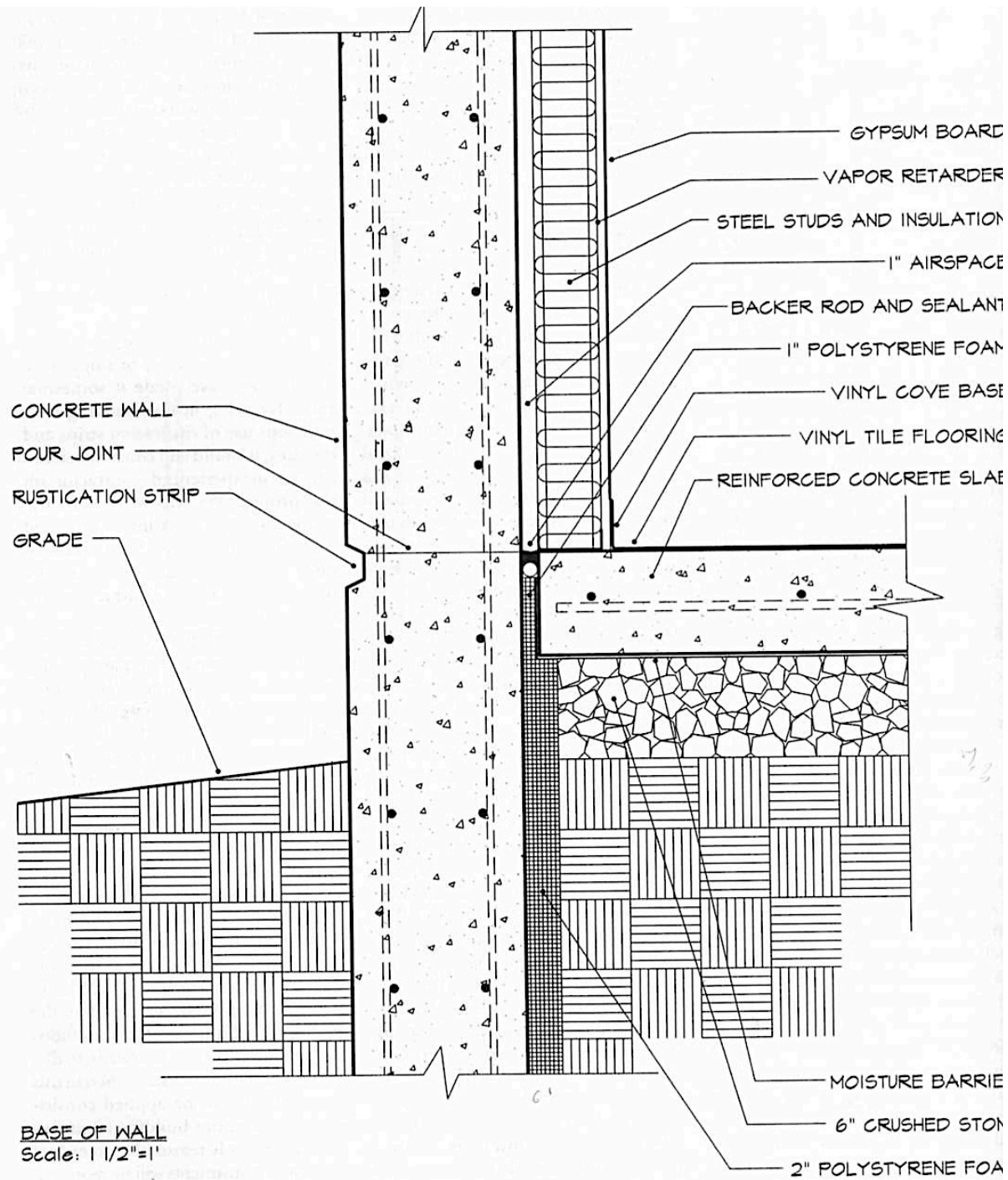
Detail Concrete Wall



Detail Concrete Wall



Detail Concrete Wall



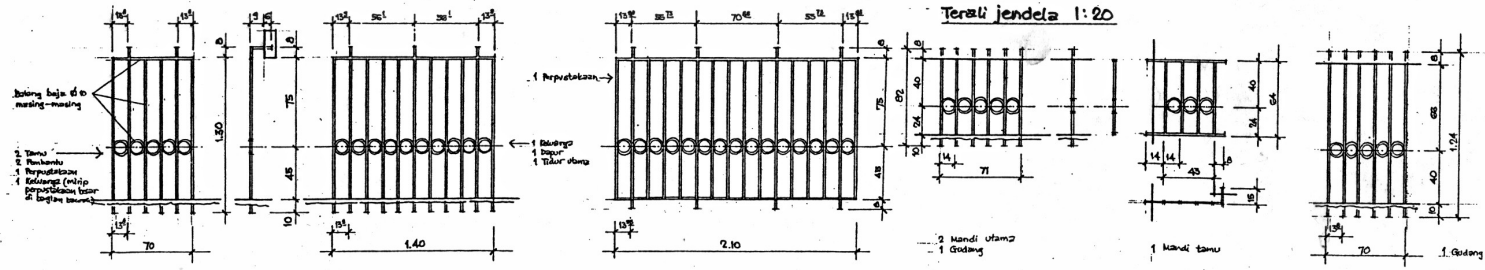
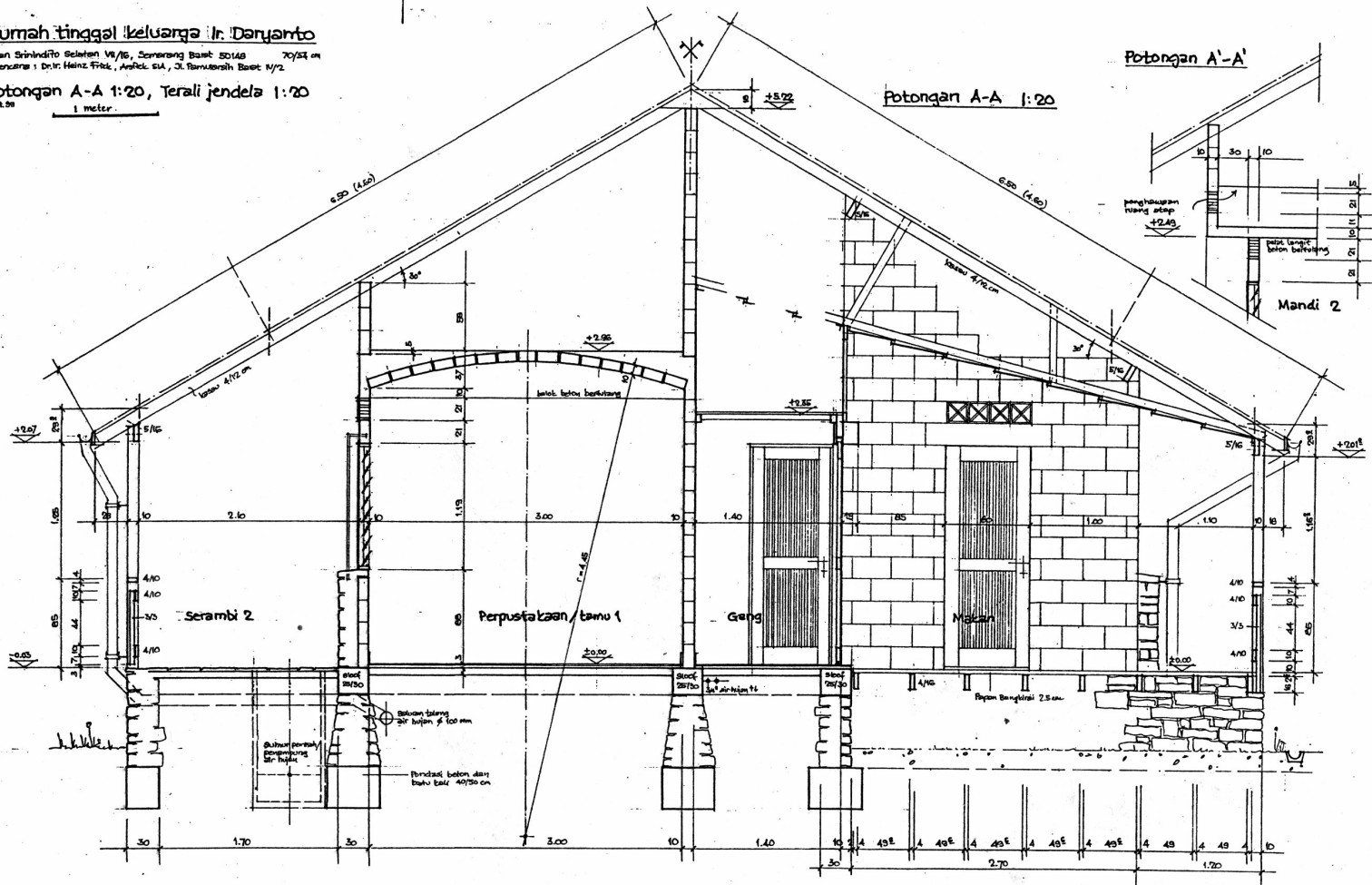
Detail Concrete Wall

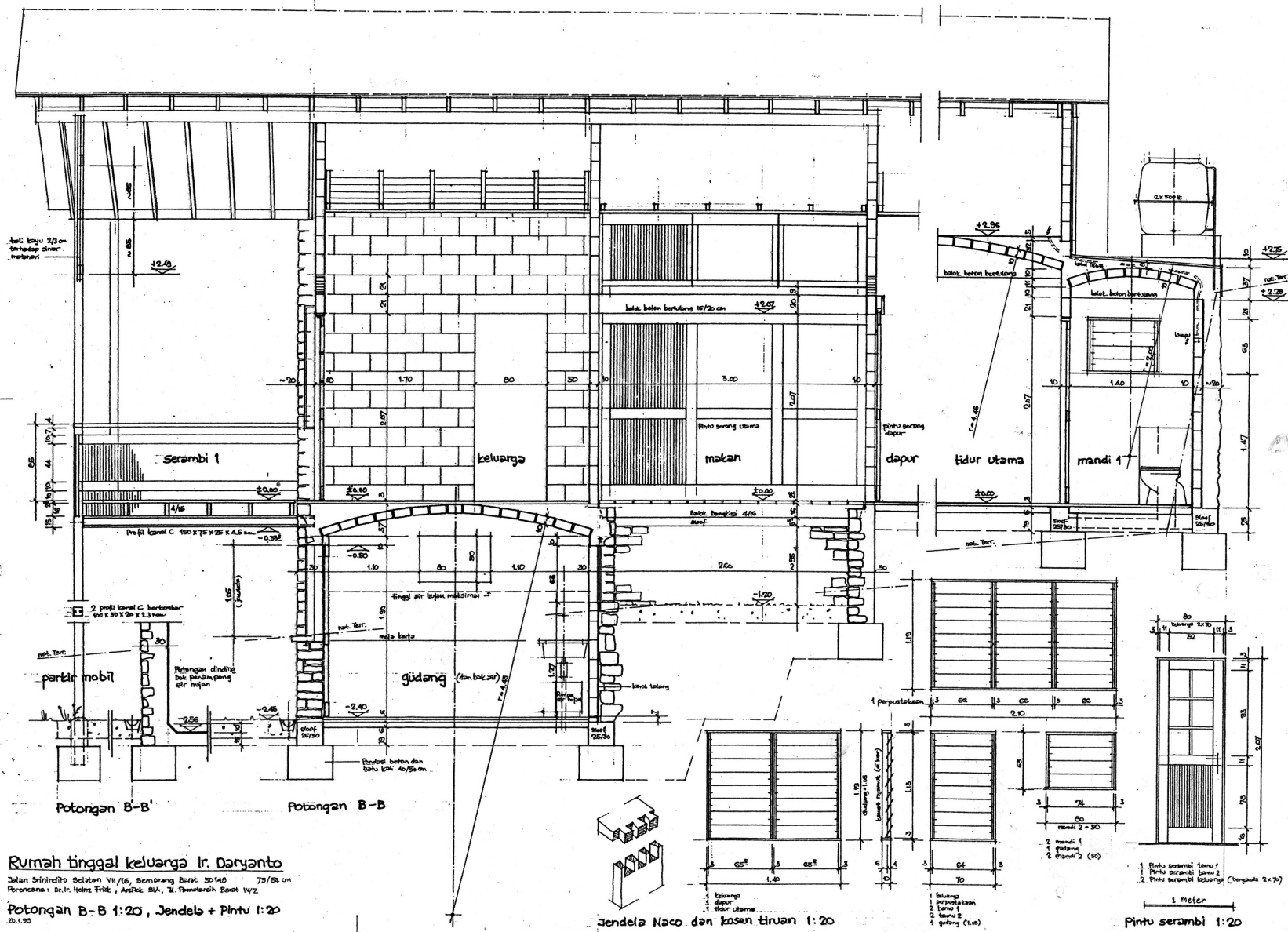
Rumah tinggal keluarga Ir. Daryanto

Jalan Sindurto Selatan VI/16, Durenkang Barat 50148 70/54 m
 Rencana: 1 Dri: Heinz Fries, Anick SA, D. Ramadhani Baet 1/2

Potongan A-A 1:20, Terali jendela 1:20
 No. 1.00

1 meter





Rumah tinggal keluarga Ir. Daryanto

Jalan Brinindo Selatan VII/16, Semarang Barat 50140 79/04 cm
 Perencana: Dr. Ir. Heinz Fritzk, Arsitek SIA, Jl. Panamwah Barat 19/2

Potongan B-B 1:20, Jendela + Pintu 1:20
 30.1.92

Jendela Naco dan kusen tiruan 1:20

Pintu serambi 1:20