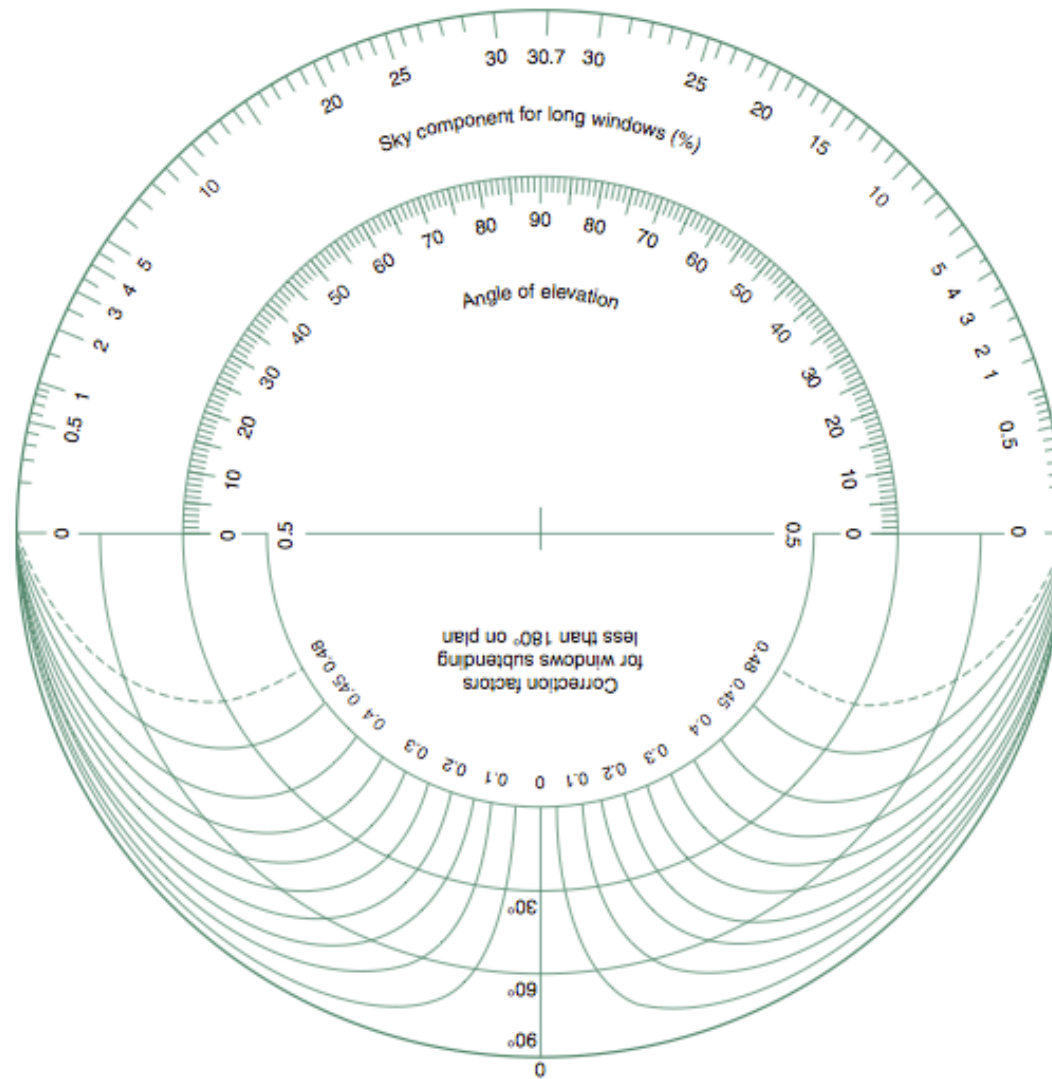


DATA SHEET D.2.3

BRS daylight factor protractor No. 2

for vertical windows, CIE overcast sky



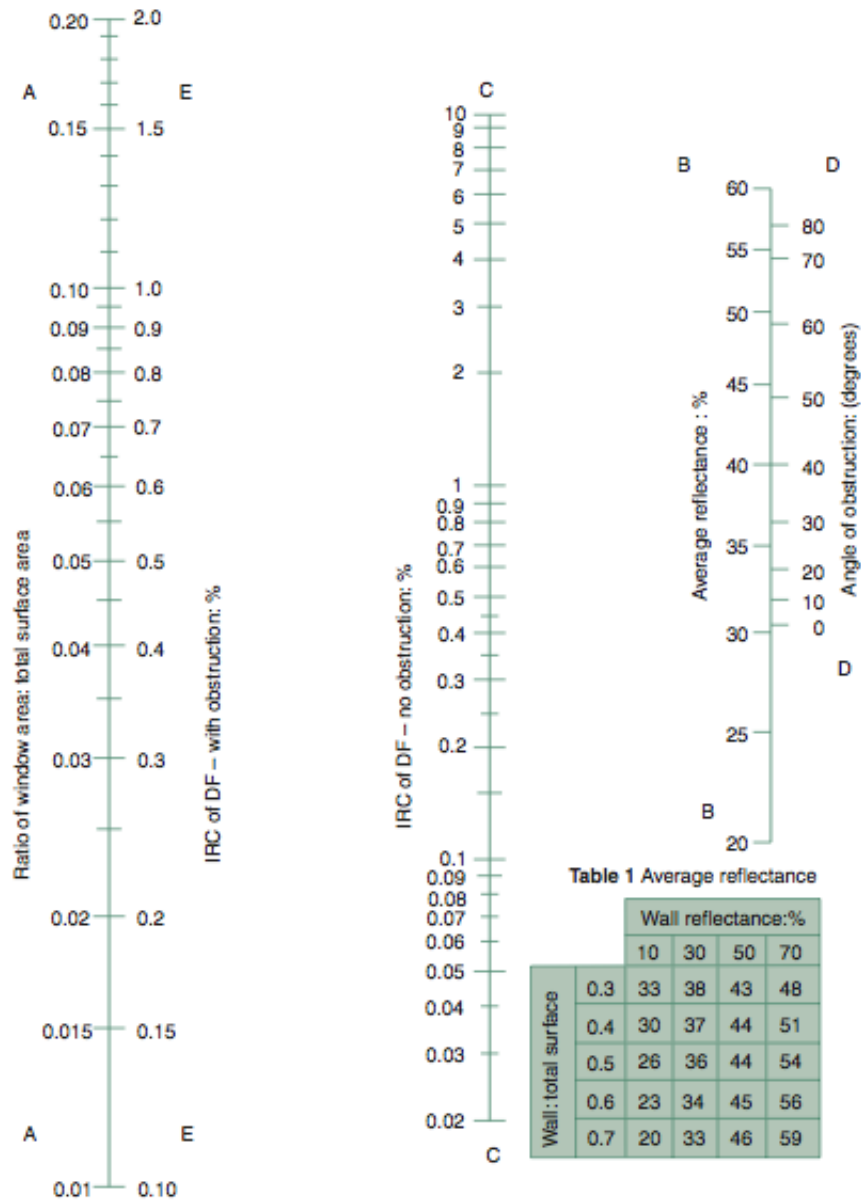
For use with section and plan of room and window
As described in Section 2.4.2, and Figs. 2.24–2.25

DATA SHEET D.2.4

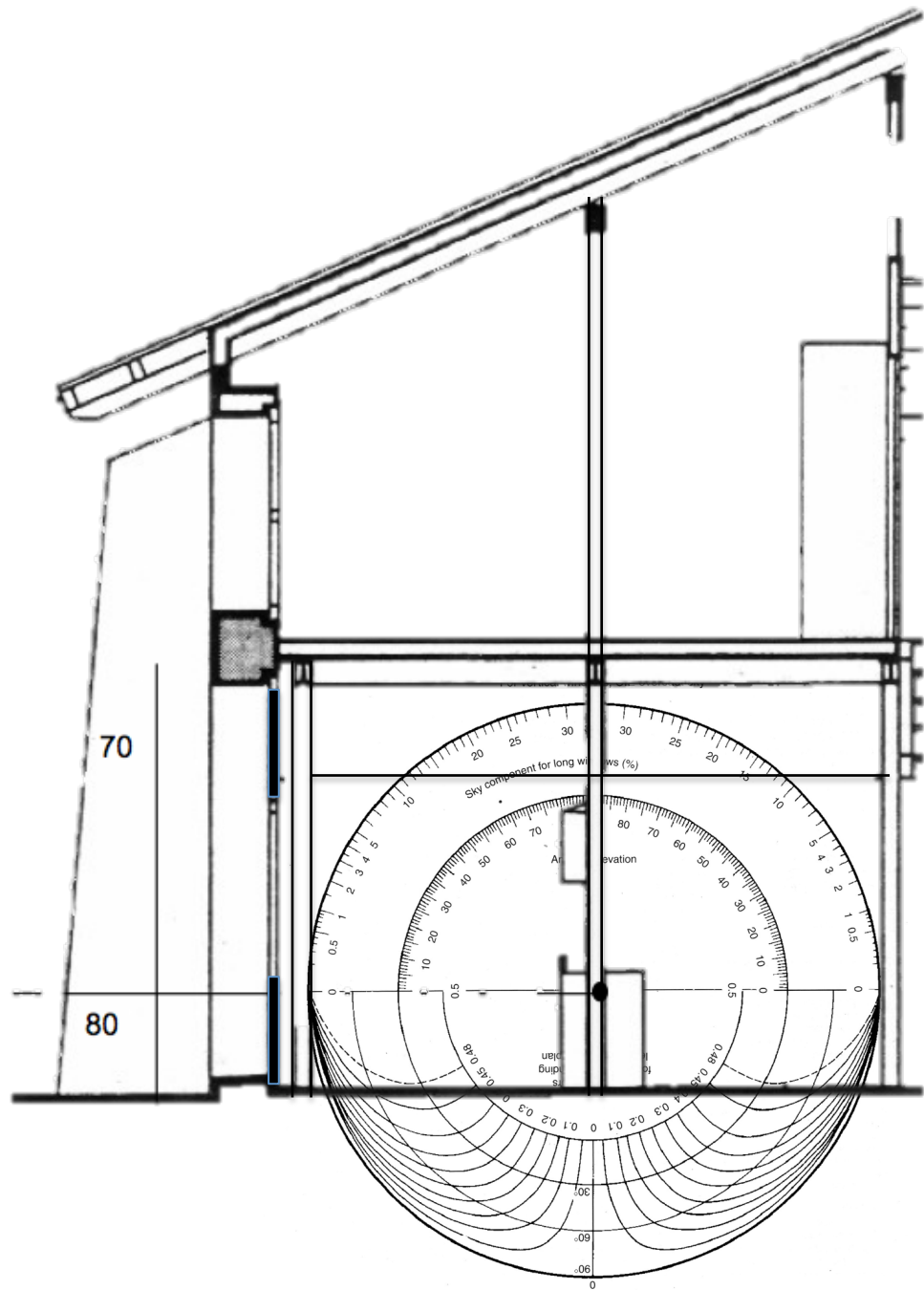
Daylight factor: nomogram for the IRC
(internally reflected component)

Table 2 D-factors for deterioration of surfaces

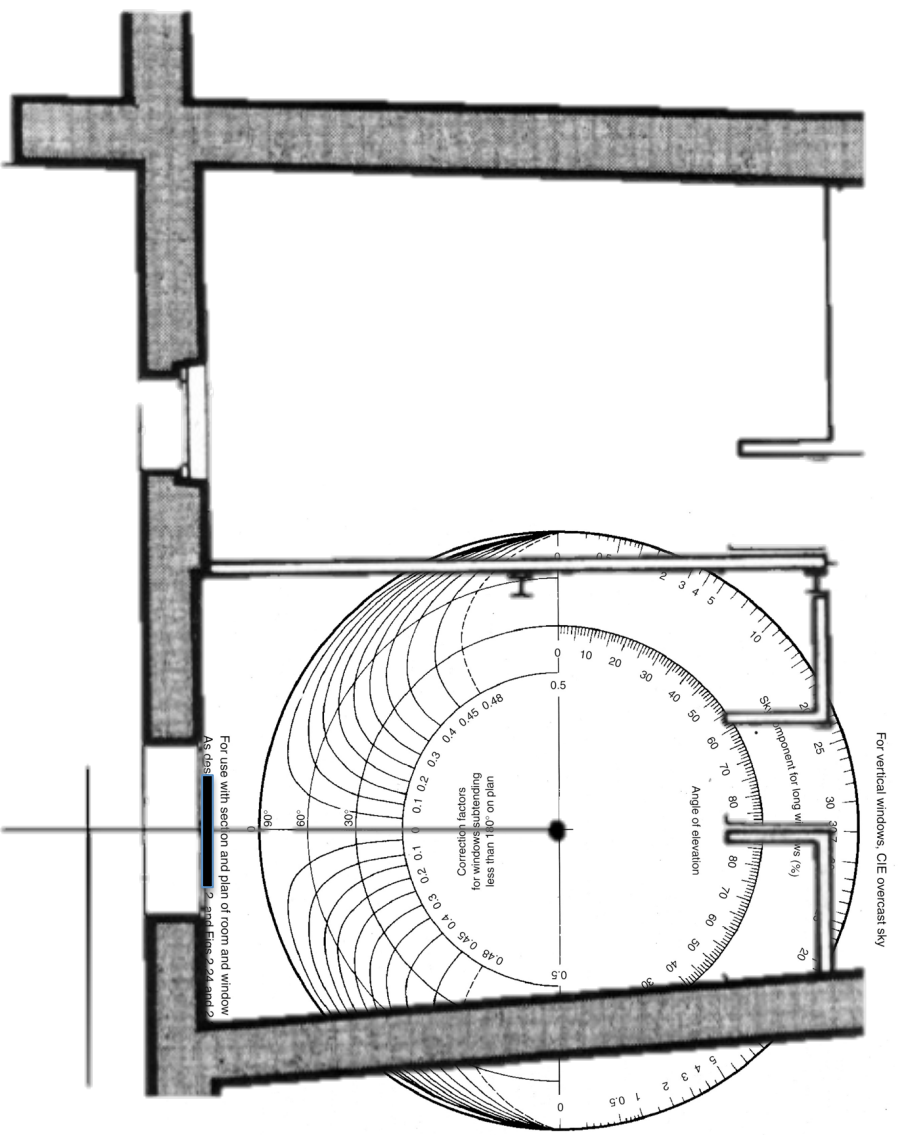
Location	Room use	
	Clean	Dirty
Clean	0.9	0.7
Dirty	0.8	0.6



use of the nomogram is explained in Section 2.4.2 and Fig. 2.26



For use with section and plan of room and window
As described in Section 2.4.2, and Figs 2.24 and 2.25.



For vertical windows, CIE overcast sky

For use with section and plan of room and window
 As described in Part 2, 2.1 and 2.2

Correction factors
 for windows subtending
 less than 1.0 on plan

Angle of elevation

Sk (%)

Sk (%)

Sk (%)

Sk (%)

Sk (%)

Sk (%)

Sk (%)

Sk (%)

Sk (%)

Sk (%)

Sk (%)

Sk (%)